

## Church Road, Hayes, UB3 2LB

Guide Price £769,950

🛏 4 🚿 2 🚗 1



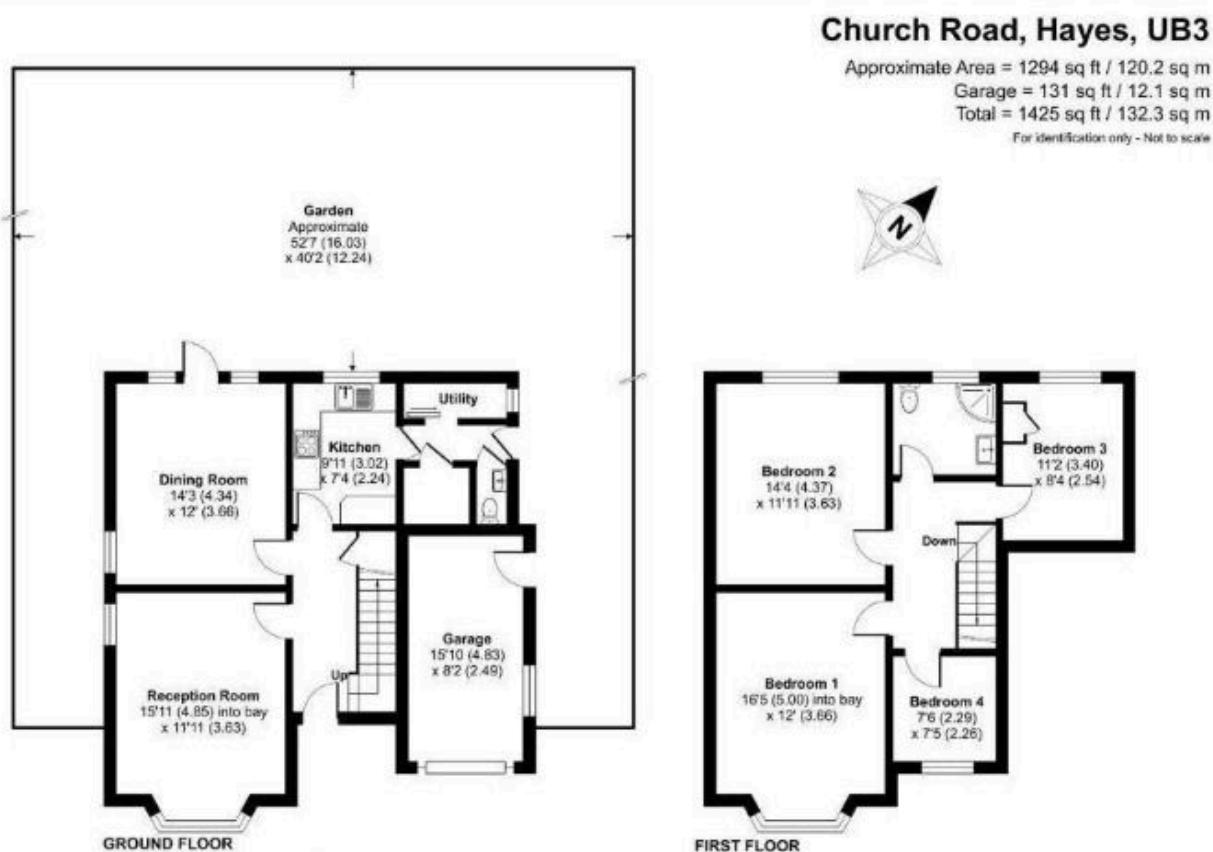
910 Uxbridge Road, Hayes  
Middlesex UB4 0RW

info@shawsoflondon.co.uk  
www.shawsoflondon.co.uk

020 8561 6888

📷 @shawsoflondon

- Four Bedroom Detached
- Large Reception Room
- Ground Floor WC
- Utility Room
- Large Driveway For 5/6 Cars
- Potential Loft Conversion & Further Extension on the Rear (STPP)
- Large Dining Room
- Family Bathroom/WC
- Large Garden
- Integral Garage




**🏡 Four-Bedroom Detached Home with Garage & Extension Potential – Prime Hayes Location 🏡**

A spacious four-bedroom detached family home set on a sought-after tree-lined road in Hayes. Offering two reception rooms, a fitted kitchen with utility, and a private rear garden, the property also benefits from off-street parking and a garage. With excellent scope to extend (STPP) and located close to Uxbridge Road, local amenities, and Hayes & Harlington Station (Elizabeth Line), this is an ideal long-term family home opportunity.

910 Uxbridge Road, Hayes  
 Middlesex UB4 0RW

info@shawsoflondon.co.uk  
 www.shawsoflondon.co.uk

**020 8561 6888**


 @shawsoflondon



910 Uxbridge Road, Hayes  
Middlesex UB4 0RW

[info@shawsoflondon.co.uk](mailto:info@shawsoflondon.co.uk)  
[www.shawsoflondon.co.uk](http://www.shawsoflondon.co.uk)

**020 8561 6888**

 @shawsoflondon

"Shaws of London" is the trading name of Shaw & Co Estates (UK) Ltd