

**Trueman
Letting
Company**



**35 Abbey Street
Farnham**

£1,550 Per

Located on the south side of Farnham town, this delightful mid-terraced two-bedroom cottage on Abbey Street offers a perfect blend of comfort and convenience. With its inviting atmosphere, this home is ideal for small families, couples, or individuals.

There is one unallocated parking space for one vehicle at the end of the road which allows for easy access to the property.

Farnham is renowned for its picturesque streets & historic architecture. Residents will enjoy the proximity to local amenities, including Gostrey Meadows, shops & cafes, all within a short walking distance.

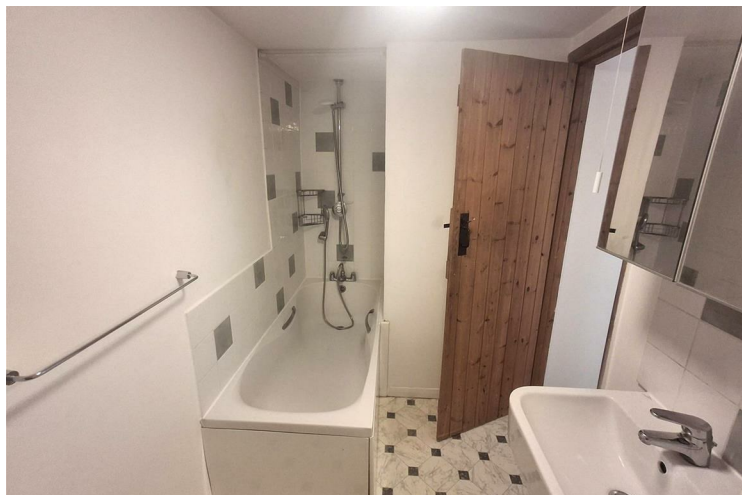
EPC E Council Tax band D

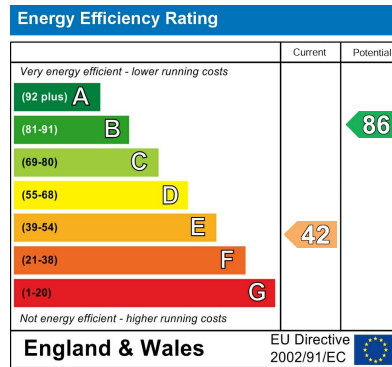


- Kitchen with appliances • Lounge / dining room with door leading to court yard garden • Master bedroom • Bathroom with shower over the bath



- Second bedroom • Storage cupboard on landing • Court Yard Garden with storage • Parking for one car





Agents Note: Whilst every care has been taken to prepare these particulars, they are for guidance purposes only. All measurements are approximate and are for general guidance purposes only and whilst every care has been taken to ensure their accuracy, they should not be relied upon and potential buyers/tenants are advised to recheck the measurements

Trueman Letting Company Lettings 01252 711227
 5a Castle Street lettings@tlc-farnham.co.uk
 Farnham www.tlc-farnham.co.uk
 Surrey
 GU9 7HR

