



Costead Manor Road, Brentwood, CM14 4YN
£650,000

Jenkins Property

T: 01277228620

E: SALES@JENKINS-PROPERTY.COM

WWW.JENKINS-PROPERTY.COM

Jenkins Property

Costead Manor Road, Brentwood, this delightful semi-detached house offers a perfect blend of comfort and style. With three spacious reception rooms, this property provides ample space for both relaxation and entertaining. The well-appointed living areas are designed to cater to modern family life, ensuring that everyone has their own space to unwind.

The house boasts three generously sized bedrooms, each providing a peaceful retreat at the end of the day. With three bathrooms, including en-suite facilities, morning routines will be a breeze, allowing for convenience and privacy for all family members.

Parking is a notable feature of this property, with space available for up to three vehicles, making it ideal for families or those who enjoy hosting guests. The location in Brentwood is highly sought after, offering a blend of suburban tranquility and easy access to local amenities, schools, and transport links.

This semi-detached house is not just a home; it is a lifestyle choice, perfect for those looking to settle in a vibrant community. With its spacious layout and practical features, this property is sure to appeal to families and professionals alike. Do not miss the opportunity to make this wonderful house your new home.



Entry 4'2" x 4'10" (1.28 x 1.48)

Off road parking

Living Room 9'4" x 20'3" m (2.85 x 6.19 m)

Hallway 5'2" x 5'6" n (1.58 x 1.69 n)

Study / Bedroom 4 8'9" x 7'8" m (2.69 x 2.36 m)

WC 3'3" x 6'9" m (1.00 x 2.07 m)

Kitchen 20'5" x 8'10" (6.23 x 2.70)

Landing 5'1" x 6'10" (1.57 x 2.09)

Bedroom 14'4" x 9'0" m (4.37 x 2.75 m)

En-suite 3'11" x 6'1" m (1.21 x 1.87 m)

Bedroom 10'5" x 9'4" (3.19 x 2.87m)

Bedroom 8'10" x 7'11" (2.70 x 2.43)

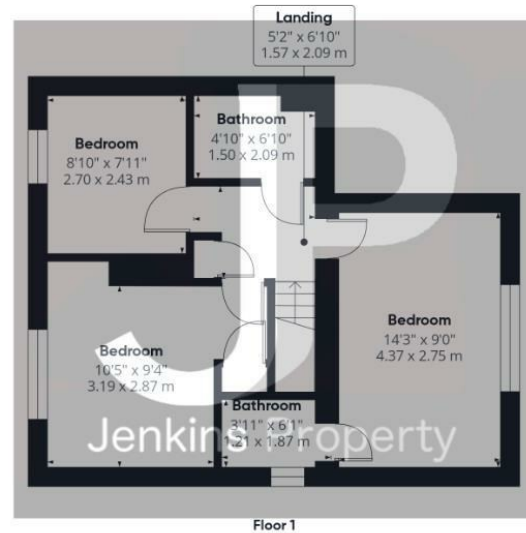
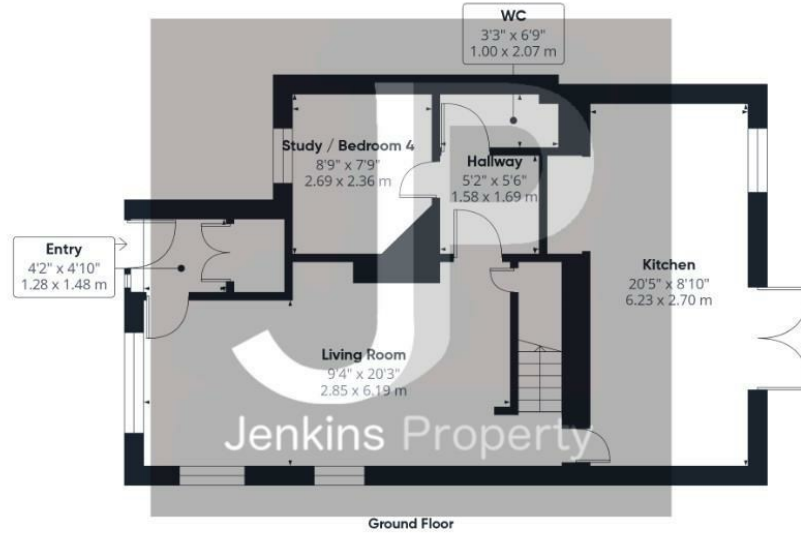
Bathroom 4'11" x 6'10" (1.50 x 2.09)

Rear Garden

- Semi detached
- Ensuite to master

- Well presented
- Generous garden

- 3 / 4 Bedrooms
- Off road parking

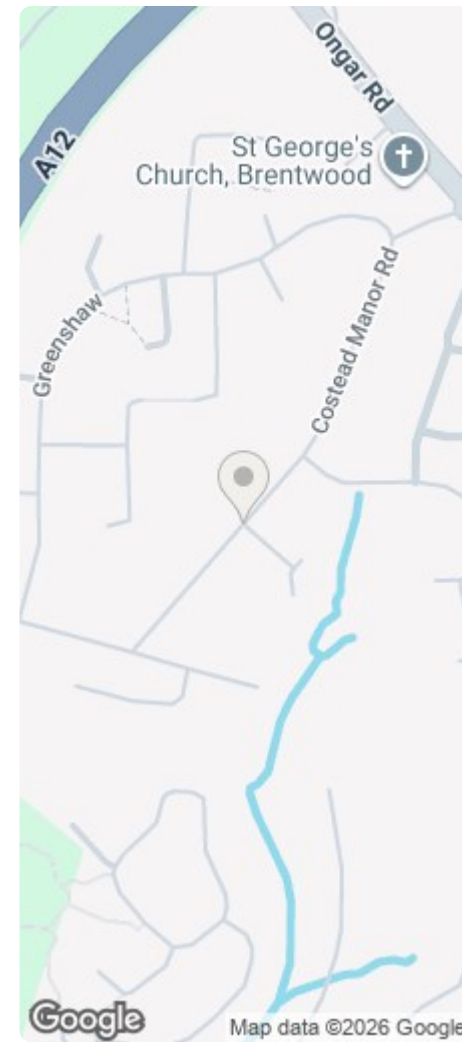


Approximate total area™
987 ft²
91.6 m²

(1) Excluding balconies and terraces

Calculations reference the RICS IPMS 3C standard. Measurements are approximate and not to scale. This floor plan is intended for illustration only.

GIRAFFE 360



Energy Efficiency Rating		Environmental Impact (CO ₂) Rating	
Current	Target	Current	Target
98-100 A		98-100 A	
81-97 B		81-97 B	
69-80 C		69-80 C	
55-68 D		55-68 D	
49-54 E		49-54 E	
39-48 F		39-48 F	
1-38 G		1-38 G	

Best energy efficient - lower running costs
 Best environmentally friendly - lower CO₂ emissions
 Not energy efficient - higher running costs
 Not environmentally friendly - higher CO₂ emissions

England & Wales EU Directive 2002/91/EC
 England & Wales EU Directive 2002/91/EC

