



Rosemoor Drive

East Hunsbury, Northampton

oriordanbond
SALES & LETTINGS



Rosemoor Drive

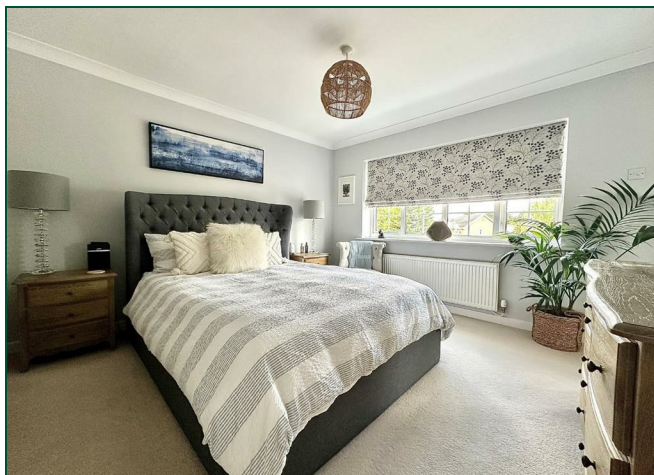
East Hunsbury
NN4 0XD

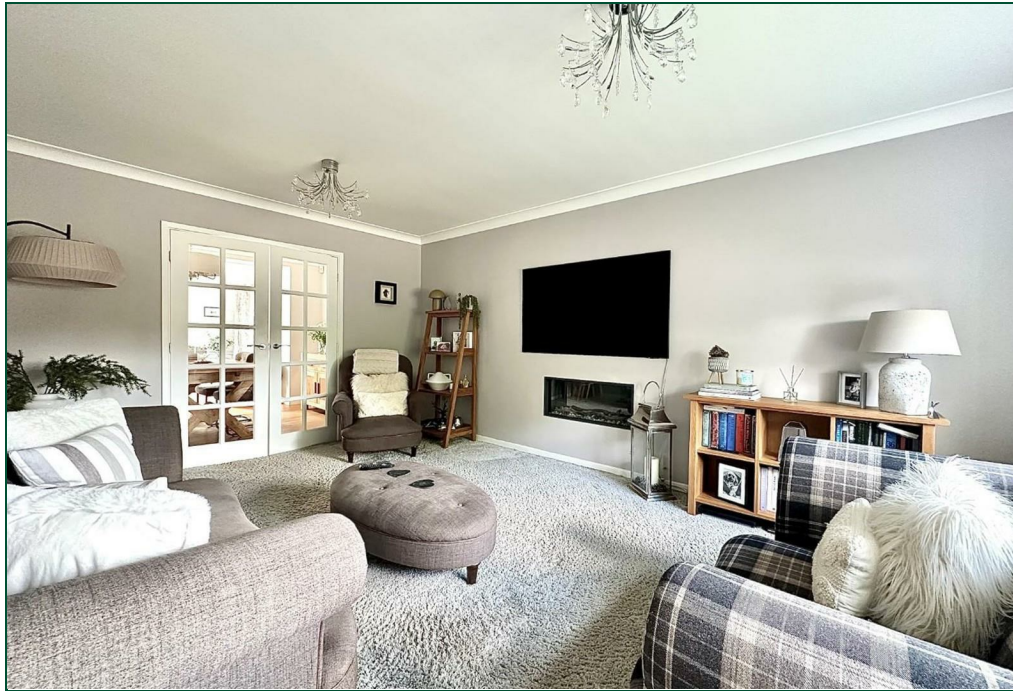
Price
£500,000

A beautifully presented four bedroom detached family home, situated in a desirable cul-de-sac, within East Hunsbury. This fabulous home has been tastefully modernised and extended by the current owners and offers a contemporary feel throughout.

Accommodation over two floors comprises entrance hall with stairs to the first floor and storage under, a refitted cloakroom/WC and doors to all other rooms. There is a generous sitting room with an inset fireplace and double doors to a dining room which has a stunning family room off with dual aspect windows, patio doors to the garden and a vaulted ceiling. There is a re-fitted kitchen/breakfast room benefitting from fully integrated appliances to include double ovens, induction hob, extractor hood, dishwasher, fridge/freezer, wine cooler and granite worktops. There is also a separate utility room which has a second sink and space for further white goods. To the first floor is access to the loft space, doors to three ample double bedrooms with a good size fourth bedroom, a dressing area and re-fitted en-suite to the main bedroom and a re-fitted family bathroom. Outside, the property sits on a private driveway with three other properties, there is a lawned front garden and a double width driveway leading to an attached tandem length garage. The rear garden is south facing and has been fully landscaped to offer a manicured lawn with mature planted borders, various paved seating areas, an outside fireplace and enclosed by timber fencing. Further benefits include uPVC double glazing and gas radiator heating. (A/1543/M)

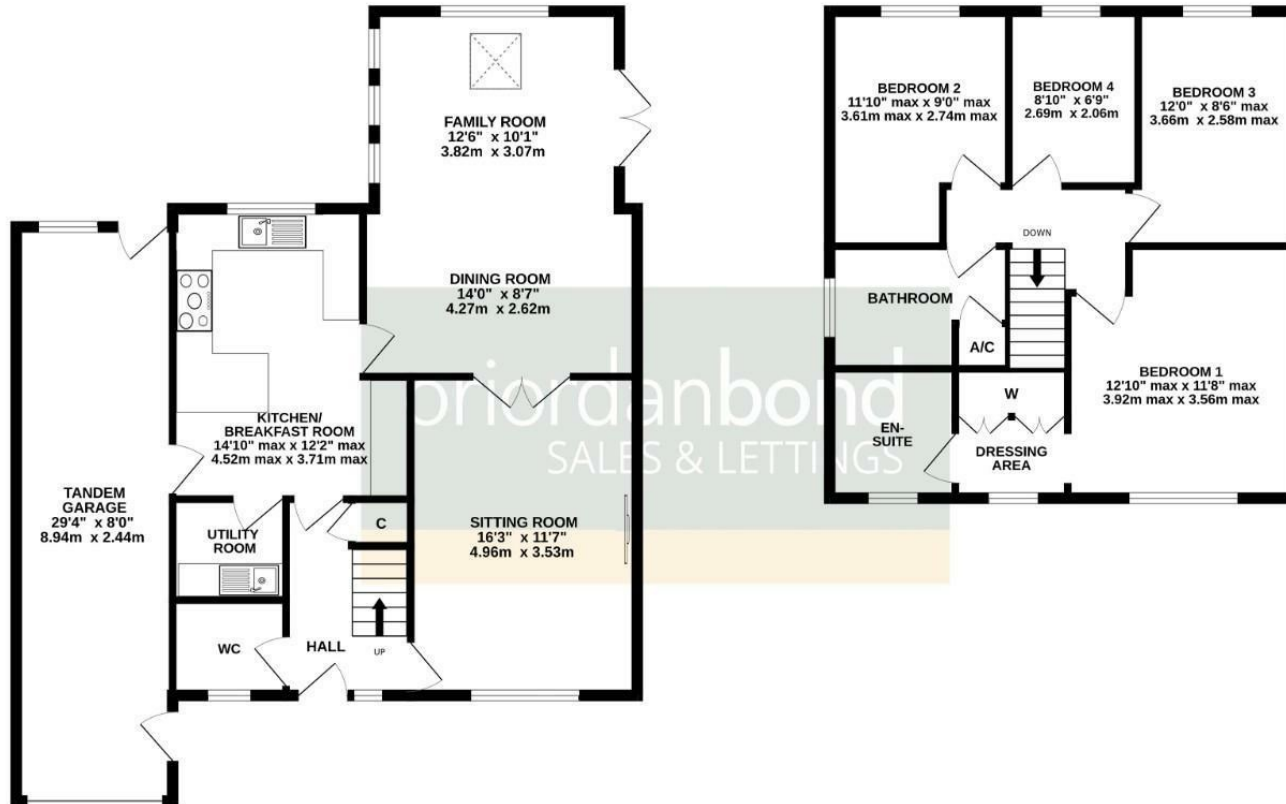
- Beautifully presented four bedroom detached family home
- Dressing area and re-fitted en-suite to master bedroom
- Three reception rooms
- Re-fitted kitchen/breakfast room and family bathroom
- Landscaped south facing rear garden with outside fireplace
- Driveway and tandem length garage





GROUND FLOOR
952 sq.ft. (88.4 sq.m.) approx.

1ST FLOOR
591 sq.ft. (54.9 sq.m.) approx.



TOTAL FLOOR AREA : 1543 sq.ft. (143.3 sq.m.) approx.

Whilst every attempt has been made to ensure the accuracy of the floorplan contained here, measurements of doors, windows, rooms and any other items are approximate and no responsibility is taken for any error, omission or mis-statement. This plan is for illustrative purposes only and should be used as such by any prospective purchaser. The services, systems and appliances shown have not been tested and no guarantee as to their operability or efficiency can be given.
Made with Metropix ©2026



Additional information

- Council Tax Band: E
- Energy Efficiency Rating:

Viewing

Viewing strictly by appointment – details below

Disclaimer

O'Riordan Bond Estate Agents Limited has not tested apparatus, equipment, fittings or services and so cannot verify they are in working order. The buyer is advised to obtain verification from their solicitor or surveyor.

O'Riordan Bond Hunsbury Sales

01604 706007

hunsbury@oriordanbond.co.uk

