

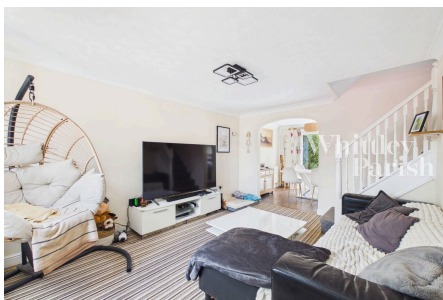
Appletree Lane, Roydon, Diss IP22 4FL

Guide Price £290,000 - £300,000

3

2

2



This detached, three bedroom property is located on the outskirts of Diss offered with no onward chain. A superb property with private parking and spacious garden.

Key Features

- Guide Price £290,000 - £300,000
- No onward chain
- Off-road parking for two vehicles
- Landscaped rear garden
- Open plan living room/diner
- Conventional three bedroom family home
- Principal bedroom having en-suite
- Less than a mile to town centre
- Freehold
- EPC Rating C - Council Tax Band C

