



Guide Price
£650,000

Freehold

4x  2x  3x 

**London Road,
Farningham, Kent, DA4**

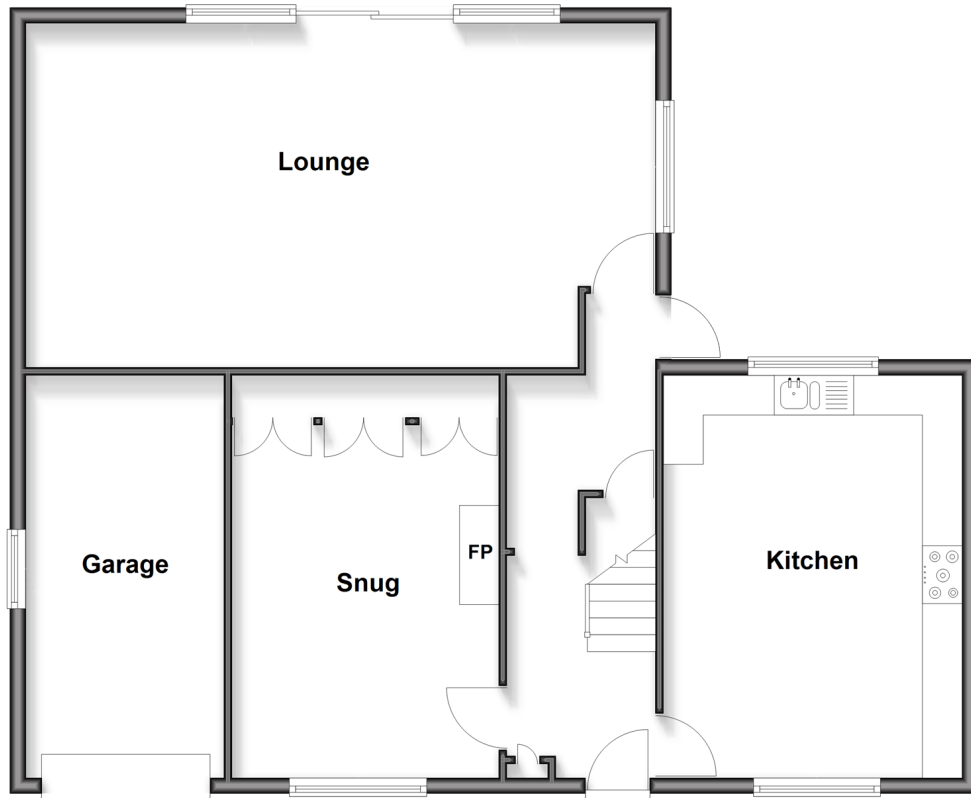
OVER 60?

Secure this property
for up to **59% less!**

Wards
Helping you move forwards

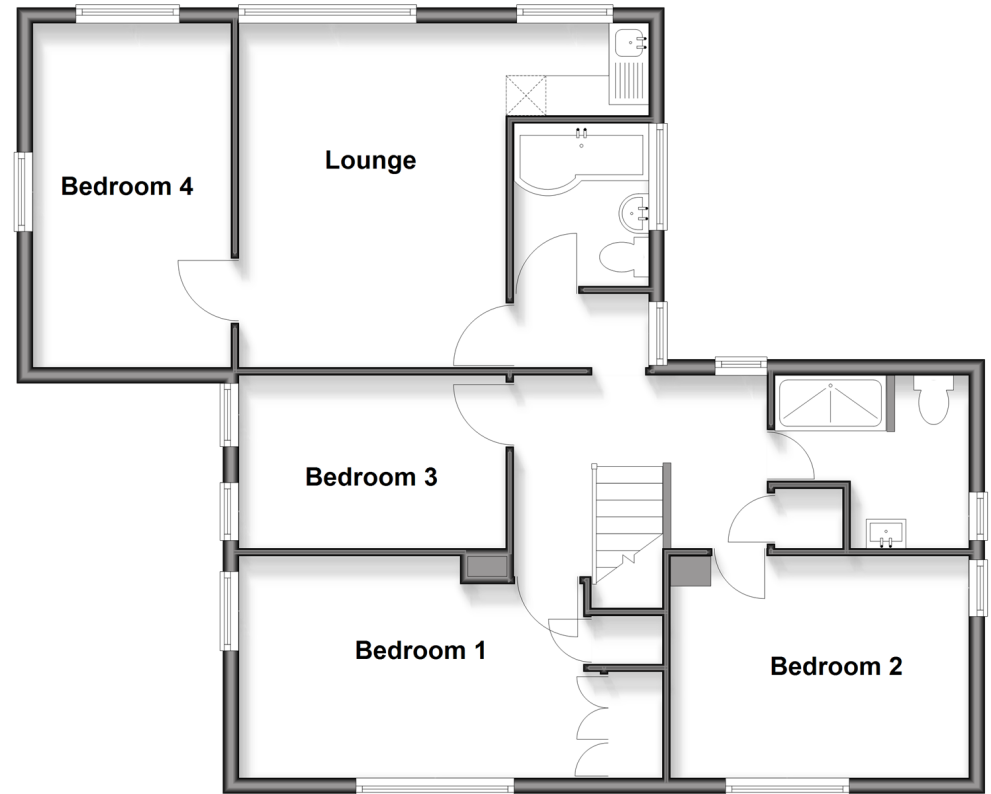
Ground Floor

Approx. 96.6 sq. metres (1040.1 sq. feet)



First Floor

Approx. 82.5 sq. metres (887.5 sq. feet)



Accommodation

GROUND FLOOR

Hallway
Lounge: 26'9 x 15'5 (8.16m x 4.70m)
Kitchen: 17'3 x 12'9 (5.26m x 3.89m)
Snug: 15'2 x 11'0 (4.63m x 3.36m)

FIRST FLOOR

Landing
Bedroom 1: 14'11 x 10'9 (4.55m x 3.28m)
Bedroom 2: 12'6 x 9'2 (3.81m x 2.80m)
Bedroom 3: 10'9 x 9'0 (3.28m x 2.75m)
Shower Room: 8'5 x 8'0 (2.57m x 2.44m)

Lounge: 14'9 x 11'2 (4.50m x 3.41m)
Kitchen: 7'9 x 5'3 (2.36m x 1.60m)
Bedroom 4: 14'10 x 8'9 (4.52m x 2.67m)
Bathroom: 7'3 x 5'10 (2.21m x 1.78m)

OUTSIDE

Garage
Off-Road Parking
Rear Garden



Main features

- Detached house in the heart of Farningham
- Large lounge, kitchen and separate snug/office
- Double bedrooms plus integral annexe
- Potential to create a 5 bedroom detached house
- Off-road parking, garage and outbuilding



Nearest Schools

Primary Schools: The Anthony Roper Primary 1.6 miles, Downsview Community Primary 2.1 miles, St Mary's C of E Voluntary Aided Primary 2.2 miles



Transport Information

Train Stations: Farningham Road 1.9 miles, Eynsford 2.0 miles, Swanley 2.8 miles



Address

London Road, Farningham, Kent, DA4



Directions

For directions to this property please contact us.



Wards
Helping you move forwards

Call Eynsford Branch 01322 862844 ■ wardsofkent.co.uk



■ If buying to let, the energy rating will need to be improved to at least 'E' rating before you can let the property

■ Through a Homewise Home For Life Plan people aged 60+ can secure this property for up to 59% less, by purchasing a Lifetime Lease

90115JKG/20260424/MC/SJ