



Chesterton Street
Hull

Guide Price £190,000 – £200,000

WIGWAM

- 3 bed semi-detached house
- Master bedroom with en-suite
- 2 bathrooms
- Off-street parking
- Three storey house
- Private rear garden

Guide price - £190,000 - £200,000

Beautifully presented and thoughtfully designed, this stylish three-bedroom semi-detached house offers contemporary living across three spacious storeys, providing an exceptional opportunity for families and professionals alike.

Step inside to discover a welcoming entrance hall that leads to a modern, well-equipped kitchen features high-quality integrated appliances, ample storage, and sleek work surfaces. With ample space for a dining table, creating an ideal space for culinary enthusiasts and family meals alike.

The living room is bright and airy, with an abundance of natural light, perfect for relaxing or entertaining guests in comfort, and also benefits from additional storage.



Upstairs, the first floor hosts two generously sized bedrooms, each finished to a high standard with plush carpeting and neutral décor, as well as a stylish family bathroom complete with contemporary fixtures and fittings.

The second floor is dedicated to the impressive master suite, offering peace and privacy with its own luxurious en-suite bathroom, creating a tranquil retreat at the end of a busy day.

Additional practical benefits include off-street parking (ensuring convenience for residents and visitors) and a private rear garden, perfect for alfresco dining and outdoor relaxation.

The property's layout maximises space and natural light throughout, with thoughtful touches such as fitted wardrobes, quality flooring, and modern lighting enhancing both comfort and style.

Situated in a sought-after residential location, this home is within easy reach of excellent local amenities, reputable schools, and convenient transport links, making daily commutes and weekend outings effortless.

The property is ready to move into and enjoy, with every detail considered for modern family living.

Council Tax band: B

Tenure: Freehold

EPC Energy Efficiency Rating: B





Kitchen

14' 0" x 11' 8" (4.26m x 3.55m)

With laminate floor, kitchen units, oak effect worktop, integrated appliances such as 4 burner gas hob, oven, dishwasher, extractor fan, 1 bowl stainless steel sink and tap, radiator, and window.

Living room

14' 11" x 11' 5" (4.54m x 3.49m)

With laminate flooring, storage cupboard, radiator, and French doors to rear garden.

Downstairs toilet

3' 4" x 4' 10" (1.01m x 1.47m)

With laminate flooring, wash basin on pedestal, toilet, radiator, and window.

Bedroom 1

19' 5" x 14' 8" (5.92m x 4.46m)

With carpet, en-suite, radiator, and window.

En-suite

5' 10" x 7' 10" (1.78m x 2.39m)

With laminate flooring, shower cubicle with tiled wall, wash basin with tiled splashback, toilet, Velux-style window, radiator, and storage.

Bedroom 2

9' 7" x 12' 10" (2.91m x 3.91m)

With carpet, radiator, and window.

Bathroom

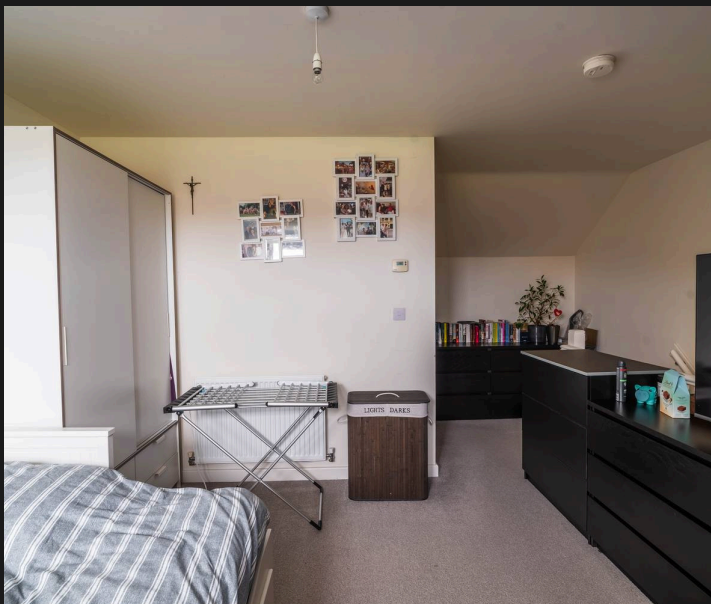
5' 5" x 7' 10" (1.65m x 2.40m)

With laminate flooring, bath with shower, wall covering, toilet, wash basin on vanity unit, storage unit, radiator, and window.

Bedroom 3

10' 0" x 8' 0" (3.06m x 2.44m)

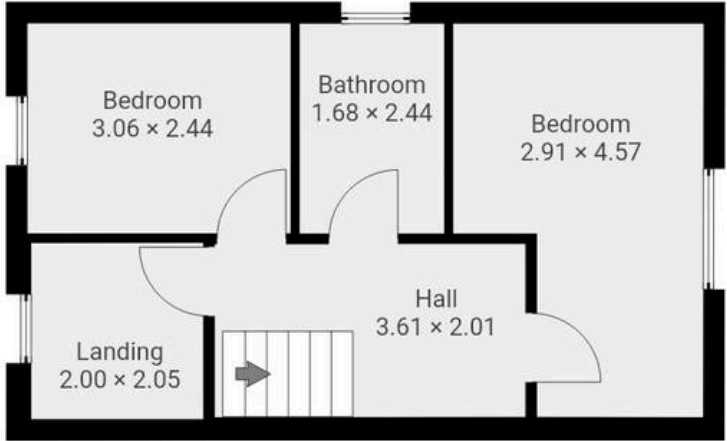
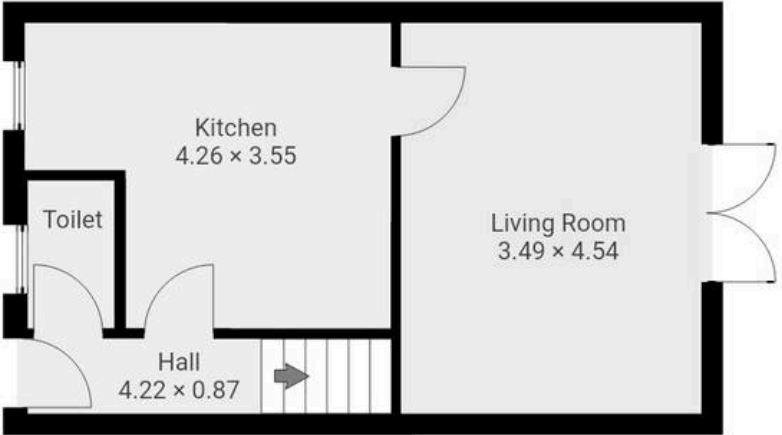
With carpet, radiator, and window.



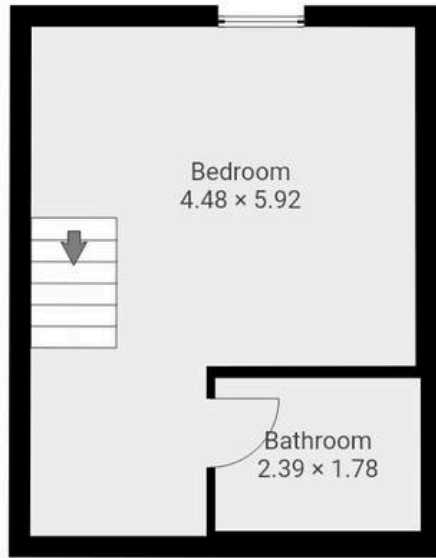








This floor plan is provided without warranty of any kind. All measures have been taken to ensure quality and accuracy, however we disclaim any warranty including, without limitation, satisfactory quality or accuracy of dimensions.





Wigwam

Block A, Unit 7B, Flemingate, Beverley - HU17 0NQ

01482505152 • hello@wigwamhomes.co.uk • www.wigwamhomes.co.uk