



Key Features

- ◆ Two-bedroom, ground-floor apartment
- ◆ Sought-after Willingdon location
- ◆ Close to local schools
- ◆ Off road parking
- ◆ Easy access to A27
- ◆ EPC rating D



Eastbourne Road, Willingdon, Eastbourne

£1,100 PCM



Northwood are delighted to welcome to market this lovely ground-floor, two bedroom apartment in the ever popular Willingdon area of Eastbourne.

Accommodation comprises: living room, kitchen, two double bedrooms and bathroom with walk-in shower.

Further benefits include communal areas, off road parking, double-glazing, gas central heating and electric shower.

Located just off Eastbourne Road opposite Huggetts Lane Recreation Ground this spacious two bedroom flat is close to local schools, shops and amenities and within striking distance of the A27.





Please view our immersive virtual tour to fully appreciate this fantastic property:
<https://tour.giraffe360.com/fa2cff33b5ec480380d3a4e4ebe31bce/>

Mobile Phone Coverage and Broadband speeds can be checked on the Ofcom website:
<https://checker.ofcom.org.uk/>

Council Tax Band: B £2029

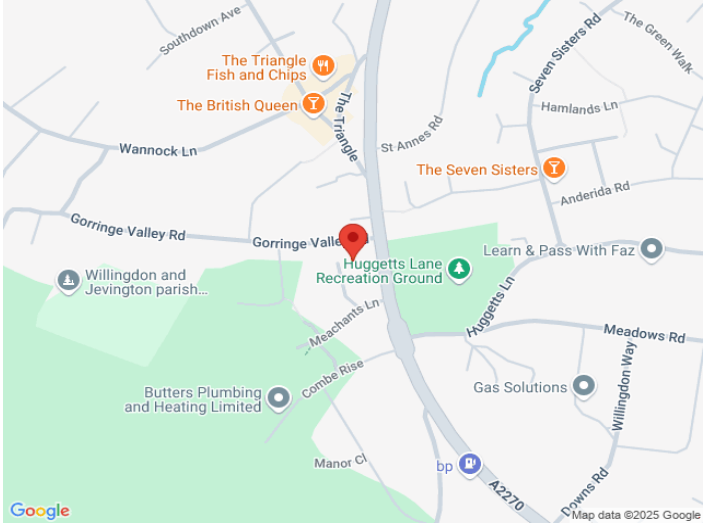
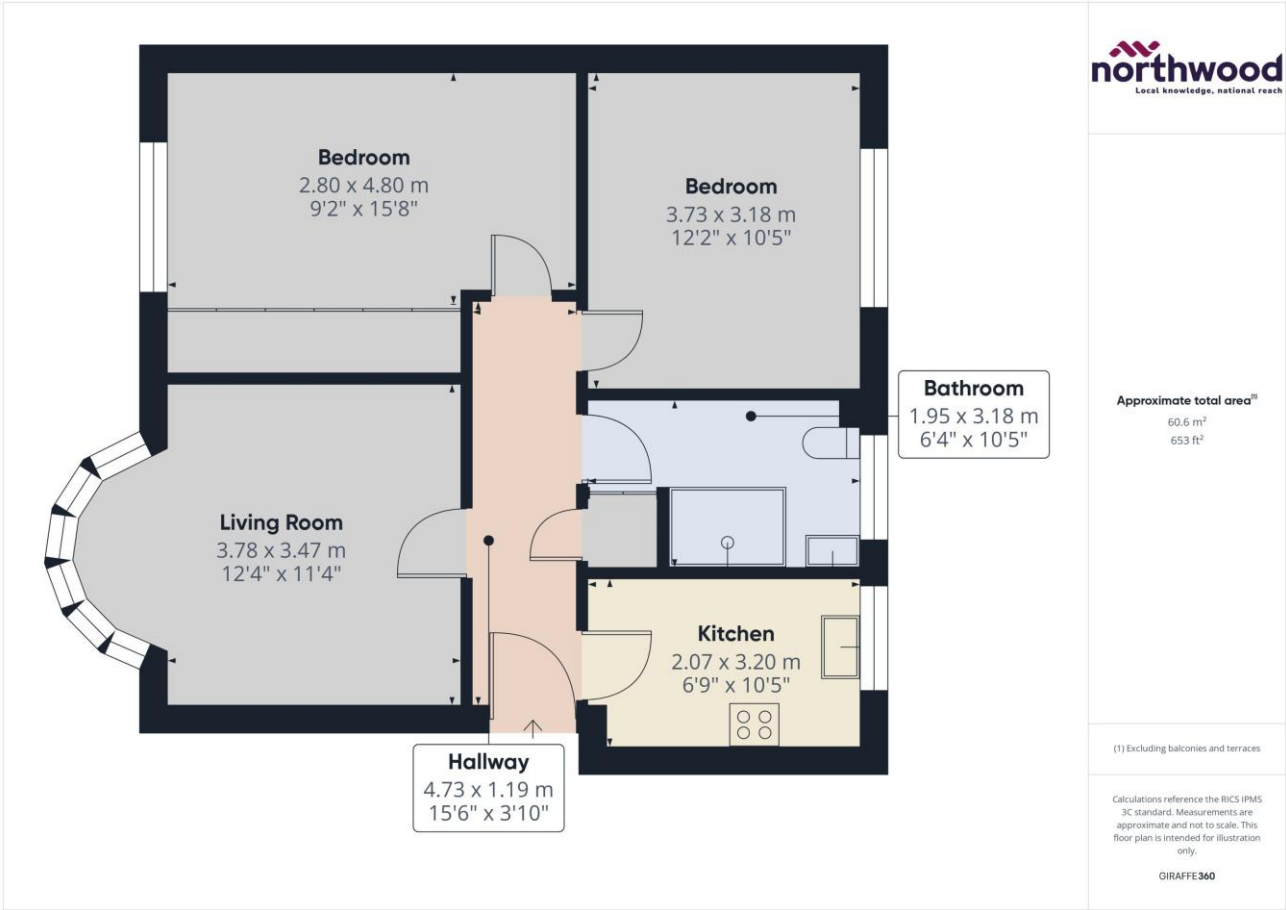
Holding Deposit: £253.84 (one week's rent)
Full Deposit: £1269.23 (Holding Deposit + extra 4 weeks' rent to make a 5 week deposit)
1st month's rent + Full Deposit: £2369.23

Total household income must exceed £33,000.00 to be considered for this property.

This property is managed by Northwood, should a maintenance issue arise, it can be reported 24 hours a day via our website.







SEE MORE ONLINE

Northwood
81-83 South Street
Eastbourne
BN21 4LR
01323 744544
eastbourne@northwooduk.com

northwood
Local knowledge, national reach