



Knutsford
Yorston Lodge


IRLAMS
of Knutsford

Knutsford, WA16 0DS

Yorston Lodge

£975,000



The Property

A stunning, three-bedroom, three-bathroom, bespoke turnkey townhouse forming a landmark development by award winning local developers Modern Unique Developments, situated in the heart of the town forming part of the St Johns Road conservation area.

Particular mention must be made of the stunning open-plan Living Dining Kitchen, which will be fitted with a bespoke kitchen tailored to the purchaser's individual requirements. The current design features a hand-painted shaker kitchen with premium Neff appliances, although alternative styles, including contemporary German kitchens, may be available, allowing purchasers the opportunity to create a space perfectly suited to their own tastes and lifestyle. Further highlights include three generous double bedrooms arranged over the upper floors, each enjoying the benefit of its own en-suite, together with a well-appointed utility room on the first floor

and a useful study to the second floor, perfectly suited to modern family living. The property will be beautifully appointed throughout with A-rated Triple glazed windows, oak staircase, bespoke skirting board and architrave, and underfloor heating throughout.

Located in a prime position in the conservation area, forming an exclusive, landmark development of similar properties in a timeless design a short walk to the town centre and all local amenities whilst being ideally positioned for all major network links to the Northwest and beyond. Externally the property is approached over a resin bound driveway and flagged pathway leading to the storm porch and main entrance. The front gardens are landscaped in design with low level brick wall under wrought iron railings with established hedging. The rear gardens enjoy a southerly aspect and are again landscaped in design, retained by timber fencing with courtesy gate to rear.

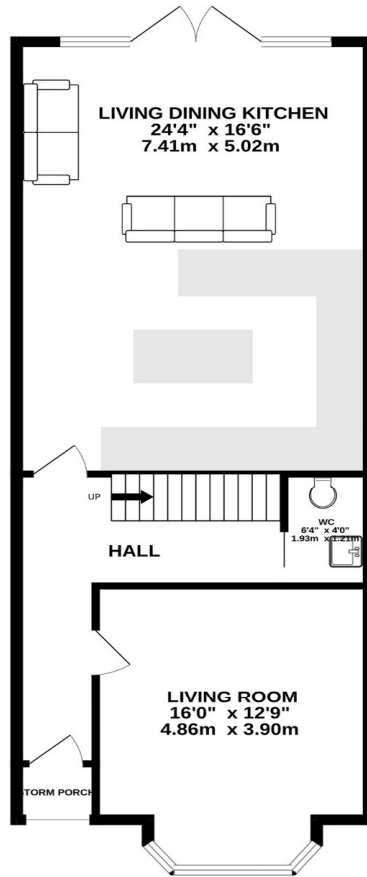


- Landmark development by award-winning local developers Modern Unique Developments
- Located within the highly regarded St John's Road Conservation Area
- Superb open-plan Living Dining Kitchen, beautifully appointed with a bespoke hand-painted shaker kitchen
- Three generous double bedrooms, each with luxurious en-suite facilities
- Exceptional specification throughout, including A-rated triple glazed windows, underfloor heating to all floors, solar panels, and air source heat pump technology
- South-facing rear garden, professionally landscaped and offering a private setting ideal for al fresco dining and entertaining
- Private resin-bound driveway with off-road parking and a dedicated EV charging point

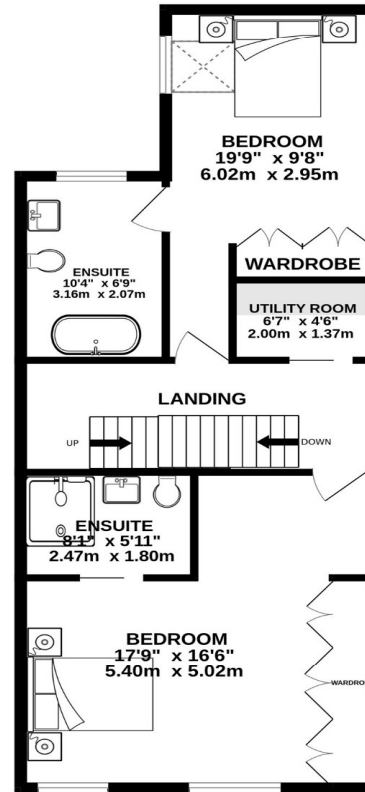
Postcode – WA16 0DS
Tenure – Freehold
Local Authority – Cheshire East
Council Tax – Band TBD
EPC - TBD



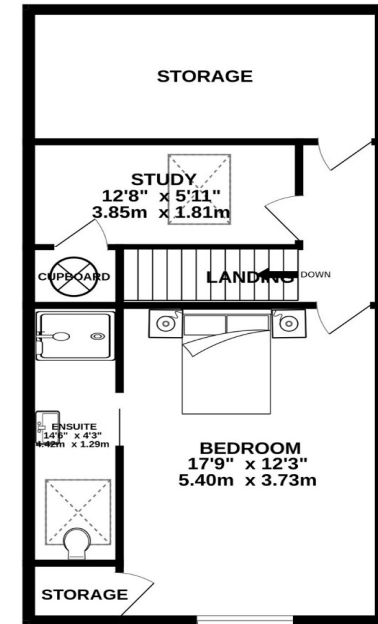
GROUND FLOOR
741 sq.ft. (68.9 sq.m.) approx.



1ST FLOOR
657 sq.ft. (61.1 sq.m.) approx.



2ND FLOOR
567 sq.ft. (52.6 sq.m.) approx.



TOTAL FLOOR AREA : 1965 sq.ft. (182.6 sq.m.) approx.

Whilst every attempt has been made to ensure the accuracy of the floorplan contained here, measurements of doors, windows, rooms and any other items are approximate and no responsibility is taken for any error, omission or mis-statement. This plan is for illustrative purposes only and should be used as such by any prospective purchaser. The services, systems and appliances shown have not been tested and no guarantee as to their operability or efficiency can be given.
Made with Metropix ©2026

103 King Street, Knutsford, Cheshire, WA16 6EQ

01565 654 000

E: info@irlamsestateagents.co.uk

www.irlamsestateagents.co.uk

I1021_ Printed by Ravensworth 01670 713330

Irlams (Estate Agents) Ltd for themselves and for the vendors or lessors of this property whose agents they are give notice that:

- (a) The particulars are set out as a general outline only for the guidance of intending purchasers or lessees, and do not constitute, nor constitute part of, an offer or contract;
- (b) All descriptions, dimensions, references to condition and necessary permissions for use and occupation, and other details are given in good faith and are believed to be correct but any intending purchasers or lessees should not rely on them as statements or representations of fact, but must satisfy themselves by inspection or otherwise as to the correctness of each of them;
- (c) No person in the employment of Irlams (Estate Agents) Ltd has any authority to make or give any representation or warranty whatsoever in relation to this property.
- (d) We believe the information above to be accurate at the point it was obtained however you may wish to make a final check with your Solicitor or with us in respect of anything above you feel crucial before you proceed with the purchase of this property.

