



## CLEAVER STREET, SE11

£475,000

- Two bedrooms
- Eat-in kitchen
- Lots of light
- Duplex apartment
- Great views
- Communal gardens

@marshandparsons  
marshandparsons.co.uk

MARSH &  
PARSONS



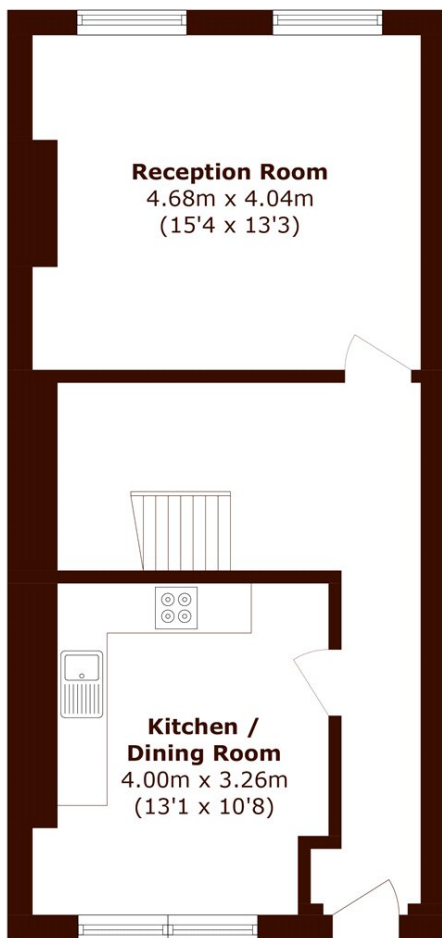
# ABOUT THE PROPERTY

A beautifully presented duplex apartment, arranged over the upper floors of this period building in the heart of Kennington. With fantastic proportions and lots of natural light this split level, two bedroom property comprises a spacious reception and separate eat-in kitchen. Upstairs to the front of the flat is the main double bedroom which enjoys views of the city's skyline. Bedroom two makes for an ideal home office/study.

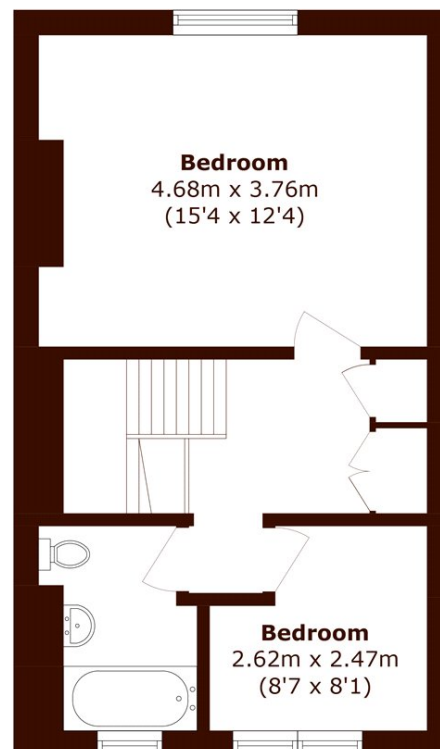
Situated a stone's throw from the prestigious Cleaver Square, and an array of local pubs, shops and restaurants, as well as the green open spaces of Kennington Park and Oval Cricket Ground. Transport links are excellent with the Northern Line at Kennington just a short walk away.



# STEP INSIDE CLEAVER STREET



**Third Floor**



**Fourth Floor**

Total area (approx.): 88.9 sq. m (956.9 sq. ft)

**Kennington**  
020 7587 1533

Energy Rating: E We aim to make our particulars both accurate and reliable. However, they are not guaranteed; nor do they form part of an offer or contract. If you require clarification on any points then please contact us, especially if you're traveling some distance to view. Please note that appliances and heating systems have not been tested and therefore no warranties can be given as to their good working order

**MARSH &  
PARSONS**