



Rainhill Way, E3

£2,500 Per week

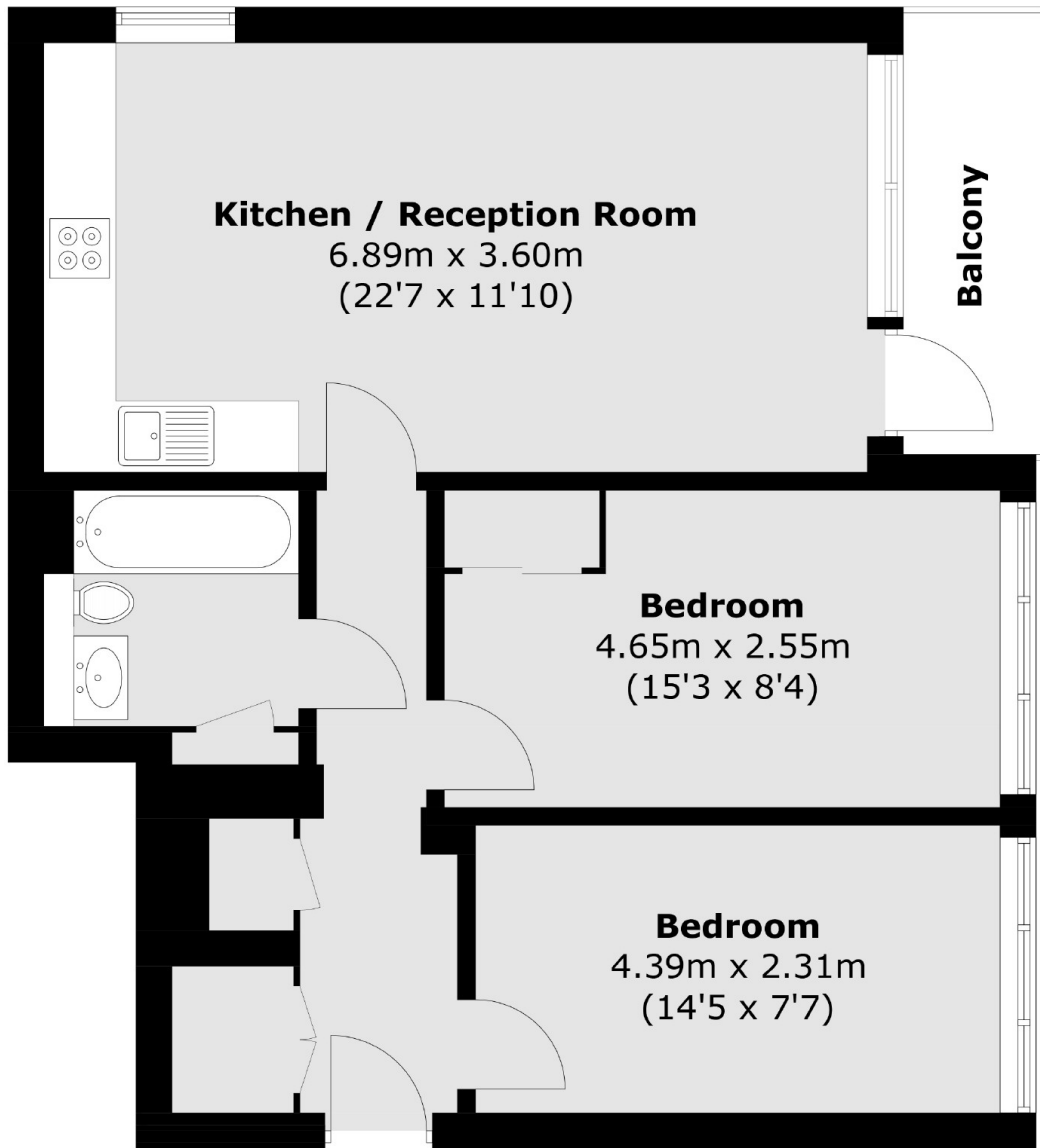
A large two double bedroom apartment in the ever popular Mallard Point development. This property is available furnished and has two equally sized double bedrooms, an open plan reception, private balcony with skyline views and an on site concierge.

Amazing location close to Bow Road Station, Mile End, Victoria Park and Stratford for all local shops, bars and restaurants.

Features

- Two Double Bedrooms
- Wooden Flooring
- Skyline Views
- Open Plan
- Balcony
- Concierge

Rainhill Way,
London, E3



Total area (approx.): 64.4 sq. m (693.2 sq. ft)
Balcony : 4.4 sq. m (47.4 sq. ft)