



**Price**  
**£330,000**

**Leasehold**

3x  2x  1x 

**Greenstede House,  
Wood Street, East  
Grinstead, West Sussex,  
RH19**

**cubitt & west**  
Helping you move forwards



## Main features

- Very spacious modern ground floor apartment
- Sold with no onward chain
- Large private garden and allocated parking
- Excellently located a short walk to train station and town centre
- Immaculately presented having been recently renovated to include new kitchen and bathrooms

## Accommodation

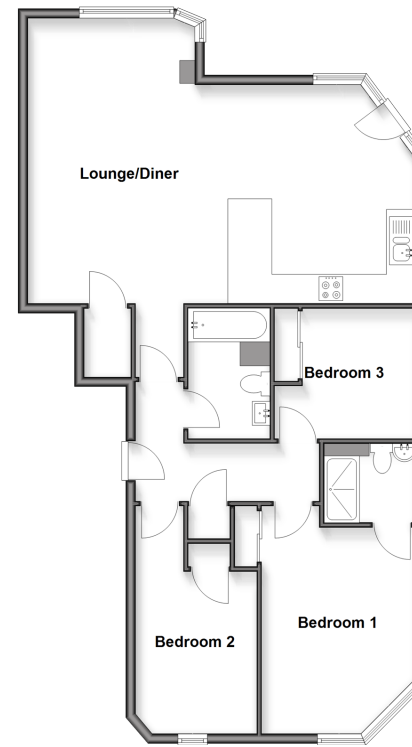
### GROUND FLOOR

- Entrance Hall
- Lounge/Diner: 27'9 x 19'7 (8.46m x 5.97m)
- Bedroom 1: 15'4 x 11'8 (4.68m x 3.56m)
- En-Suite Shower Room
- Bedroom 2: 14'2 x 10'7 (4.32m x 3.23m)
- Bedroom 3: 8'9 x 8'3 (2.67m x 2.52m)
- Bathroom

### OUTSIDE

- Private Garden
- Allocated Parking

**Ground Floor**  
Approx. 94.4 sq. metres (1016.0 sq. feet)



Call East Grinstead - 01342 314324 ■ [cubittandwest.co.uk](http://cubittandwest.co.uk)

■ Legal advice should be taken to verify fixtures/fittings, planning, alterations and/or lease details

■ Appliances & services are untested, dimensions are approximate and floor plans are not to scale



28576212/20260129/JS/CM