



Mauds Cottage 2 Post Office Row, Zennor, St. Ives, TR26 3BY

Guide price £650,000

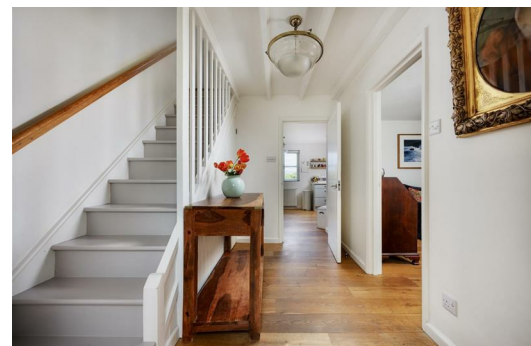
A beautifully presented Grade II Listed three-bedroom cottage offering surprisingly spacious accommodation, combining period features with well-judged contemporary elements and enjoying views towards the coast.

This attractive and deceptively spacious cottage blends historic character with modern comfort, with a stylish interior that brings together original features and a more contemporary finish.

The sitting room centres around a striking granite inglenook fireplace with wood-burning stove, creating a warm and inviting space. To the rear, the open-plan kitchen and dining area opens directly onto the garden, providing an excellent arrangement for indoor-outdoor living. This space has been thoughtfully designed, with the benefit of a large pantry and a cleverly concealed cloakroom.

Upstairs, the first floor provides three bedrooms. The principal bedroom includes an en suite and enjoys views across the countryside towards the sea. There is also a generous guest bedroom with views towards the surrounding hills and moorland, together with a third well-proportioned bedroom and a family bathroom.

The cottage is approached through a traditional wooden gate leading into an enclosed front garden, while the rear garden provides an attractive space for sitting out and connects naturally with the kitchen.



Location

Surrounded by cliffs and moorland, Zennor provides access to some of the most dramatic stretches of the South West Coast Path, with a landscape of open countryside, hidden coves and far-reaching coastal scenery. The village is also well known for the story of the Mermaid of Zennor, commemorated by a carving within the church. There is a popular village pub, while a short drive away St Ives offers sandy beaches, a picturesque harbour and an excellent range of shops, cafés, bars and restaurants. Further west, Sennen is renowned for its beach and surfing.

Distances

Gurnard's Head Inn 1.8 miles | St Ives 4.4 miles | Penzance 7.5 miles | Mount's Bay 10 miles | Mousehole 10.5 miles | Sennen 14.7 miles | Truro 29 miles | Newquay Airport 42 miles

