



HARLESDEN GARDENS, LONDON, NW10

£1,100 PCM

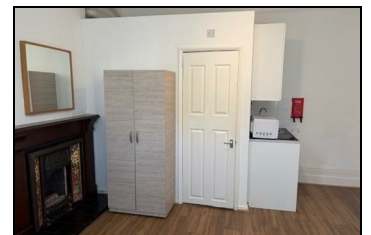
AVAILABLE IMMEDIATELY

A ground floor studio flat arranged in a well maintained property close to local amenities and transport links. The flat is fully furnished and comes with a double bed frame and mattress, wardrobe, table and chairs. The flat also has its own modern en-suite bathroom and kitchen area.

Location: Within walking distance to Harlesden Station. Local amenities are located just a stones throw away on Park Parade. Nearby green spaces include Roundwood Park.

Bills and Council Tax included.

- Furnished
- Self Contained Studio
- Well Maintained
- Bills Included
- En Suite
- Close To High Street



Energy Efficiency Rating		Environmental Impact (CO ₂) Rating	
Current	Potential	Current	Potential
<small> The energy efficient - lower energy costs The energy inefficient - higher energy costs </small>		<small> The environmentally friendly - lower CO₂ emissions The environmentally unfriendly - higher CO₂ emissions </small>	
England & Wales		England & Wales	