



Mylne Street, EC1R

£4,000 Per calendar month

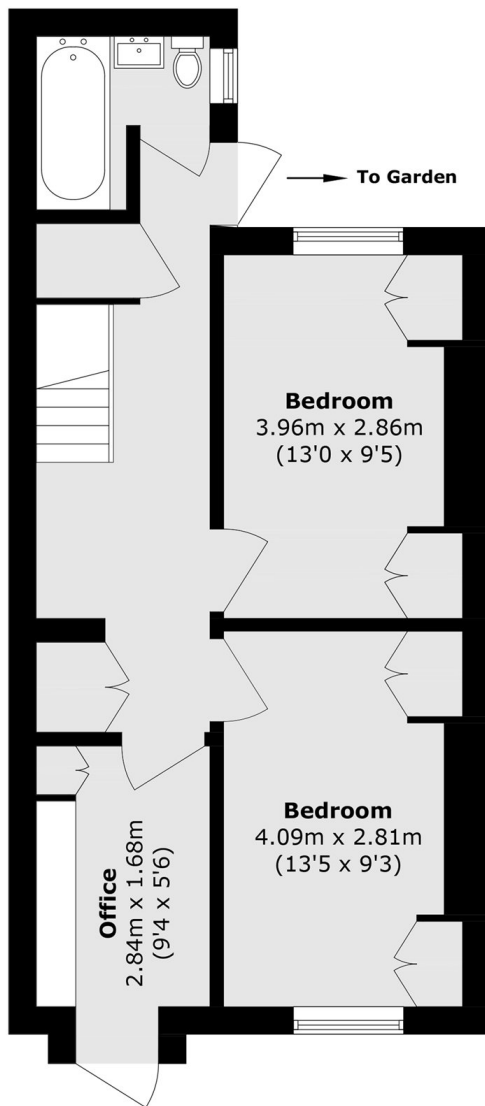
A spacious two double bedroom duplex apartment within a Georgian conversion. The property has a private entrance and a separate kitchen to the rear with views over the private patio garden.

Mylne Street is located less than half a mile to Angel Station and just over half a mile from King's Cross and Farringdon. The popular Exmouth Market with its wide range of bars and eateries is also just a few yards away.

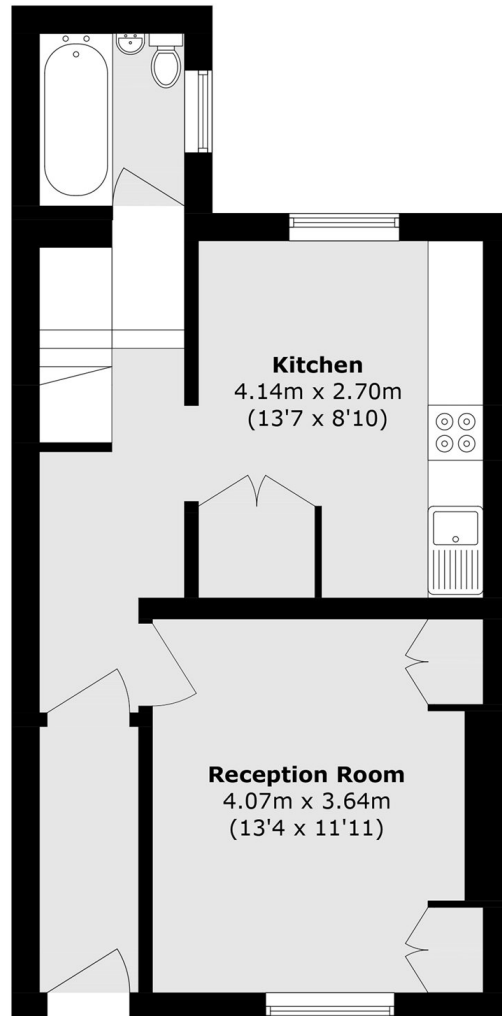
Features

- Two Double Bedrooms
- Additional Study
- High Ceilings
- Wooden Floors
- Private Entrance
- Private Garden & Terrace

Mylne Street,
London, EC1R



Lower Ground Floor



Ground Floor

Total area (approx.): 86.7 sq. m (933.2 sq. ft)