



A well presented two bedroom first floor maisonette with a private garden  
Lloyd Court, Pinner, HA5 1EF

**ROBSONS**

**Asking Price: £1,800 pcm**

## **A well presented two bedroom first floor maisonette with a private garden**

Lloyd Court, Pinner, HA5 1EF

- 
- ENTRANCE HALL • STAIRS TO FIRST FLOOR • LIVING ROOM • FITTED KITCHEN • TWO BEDROOMS • BATHROOM • PRIVATE REAR GARDEN • ON STREET PARKING • UNFURNISHED
- 

### **Description**

A well-presented two bedroom first floor maisonette set in a peaceful cul-de-sac. The property comprises entrance hallway with access to a welcoming reception/dining room flooded with natural light, a fully fitted kitchen/breakfast room, two double bedrooms and a modern family bathroom. The property also boasts a secluded private garden with a lawn and patio area for outside entertaining. N.B. Photos are not current

**\*\* An advance reservation payment of one weeks rent is required to secure the property \*\***

### **Location**

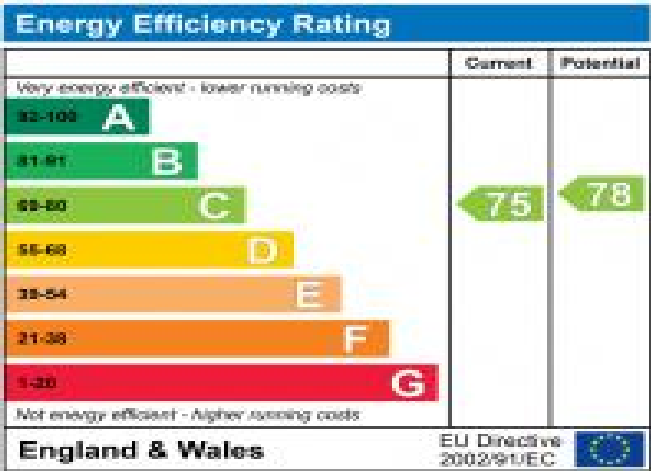
Lloyd Court is located in a peaceful cul-de-sac just moments from West Lodge primary school and Pinner high street, Pinner offers a variety of shops, restaurants, coffee houses and popular supermarkets. Transport facilities include local bus links and the Metropolitan Line at Pinner tube station, providing a fast and frequent service into the heart of Central London and beyond





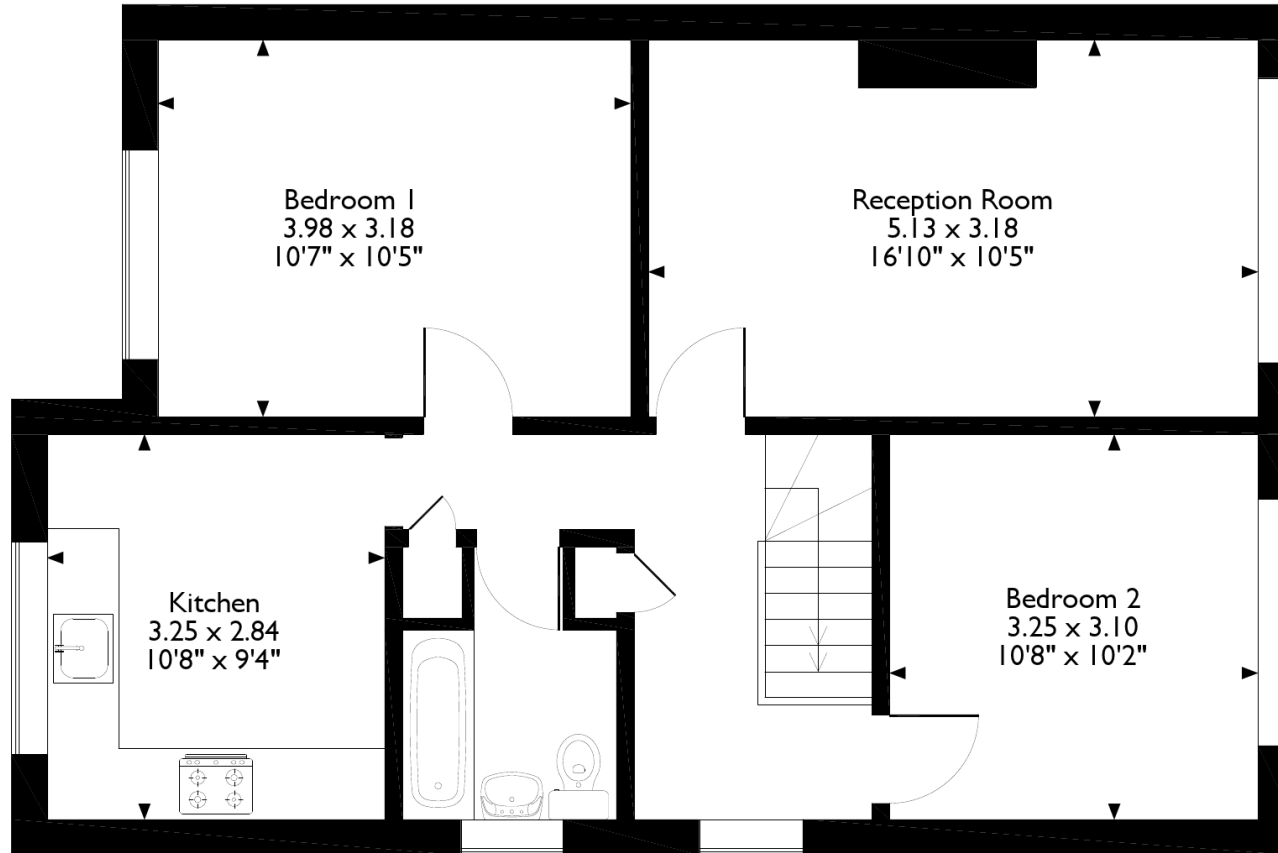
**Additional Information**

- Local Authority: Harrow
- Council Tax Band: C
- Deposit Amount: £2,076.00
- Reservation Payment: One weeks rent
- Energy Efficiency Rating: Band C
- Available Date: 29/05/2026



# Lloyd Court, Pinner

## Approximate Gross Internal Area 63 Sq M/678 Sq Ft



### First Floor

Please note that the location of doors, windows and other items are approximate and this floorplan is to be used for illustrative purposes only. Unauthorized reproduction is prohibited.

