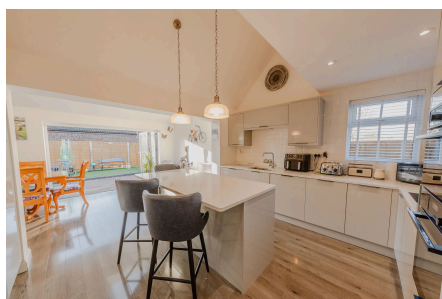
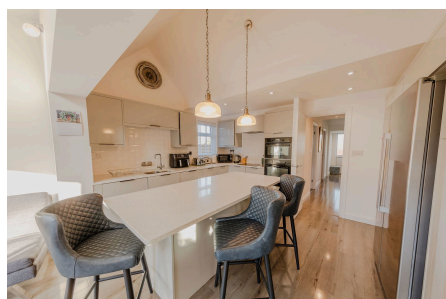


## Arncliffe Drive, Heelands

Guide Price £375,000

🛏 4 🚿 2 🛋 2



A beautifully presented and thoughtfully extended four bedroom semi detached home in the heart of Heelands. This impressive property offers bright, flexible living with a stunning rear extension featuring bi fold doors onto the garden, a high quality Magnet kitchen with a central island and breakfast bar, two bedrooms on the ground floor and two bedrooms upstairs. An ideal home for families seeking space, style and versatility.

## Key Features

- 1980s built family home
- Council tax band - C
- 132m<sup>2</sup> = 1420 Sq Ft
- Extended in 2021
- Single garage to side of house
- Current owners since 2001
- Approx. monthly utility bills = £180pcm
- Vendors are re-locationg
- Driveway parking for several cars
- REF: AJ1276

