

Glen Avenue, York
£500,000

A substantially extended and renovated home situated a stones throw away from York's city centre.



Located in the highly sought-after area of Heworth, this property enjoys easy access to local amenities, reputable schools, and excellent transport links, making it an ideal choice for those seeking a balance of comfort and connectivity.

The property is entered via a composite door into the hallway with staircase leading to the first floor accommodation. A right turn leads into a cosy living room, neutrally decorated with a feature wall, providing a comfortable retreat, perfectly suited for quiet evenings. The property has been extended double-storey to the side, creating a wonderful kitchen dining space. The kitchen features an abundance of wall and base units, stylish worktops, integrated appliances, swan-neck style tap with stainless steel sink and four ring gas induction hob. Bi-folding doors open out onto a landscaped, low maintenance rear garden with fenced borders and porcelain paving. Adjoining the kitchen diner is a matching utility room, and a downstairs W.C. The double garage can be accessed internally, and can provide off-street parking for two vehicles with remote-controlled roller door.

To the first floor, are four generous double bedrooms and two bathrooms; the primary bedroom benefits from built-in wardrobes and windows to the front elevation. The extension upstairs has created two further bedrooms, one boasting a contemporary three-piece en-suite currently used for guests. The upstairs accommodation is completed with a modern, three-piece bathroom suite, consisting of bathtub with shower over, wash hand basin, fully tiled floors and walls, and W.C.

This home has been thoughtfully renovated over time to create a modern family home in an excellent location for schooling, amenities and local transport links. An internal inspection is recommended.

Material Information

Tenure: Freehold

Services/Utilities: Mains Gas, Electricity, Water and Sewerage are understood to be connected

Broadband: Up to 1000 Mbps*

EPC Rating: C - 74

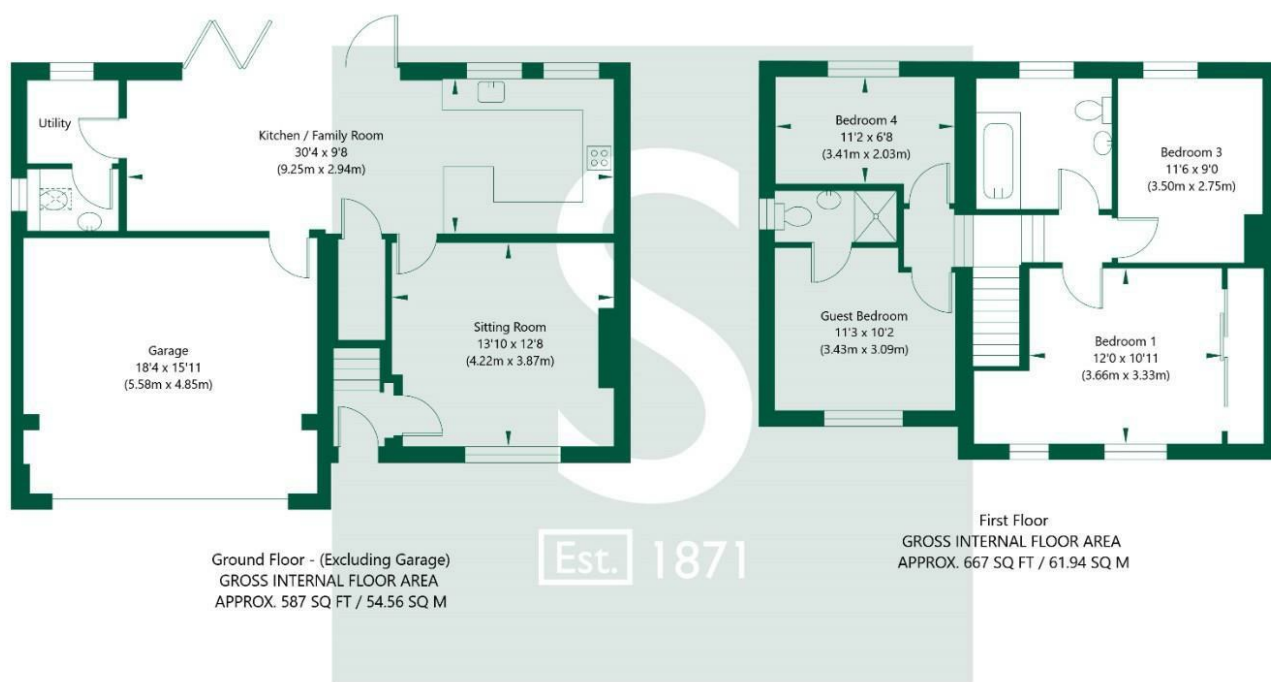
Council Tax: C - City of York

Current Planning Permission: No current valid planning permissions

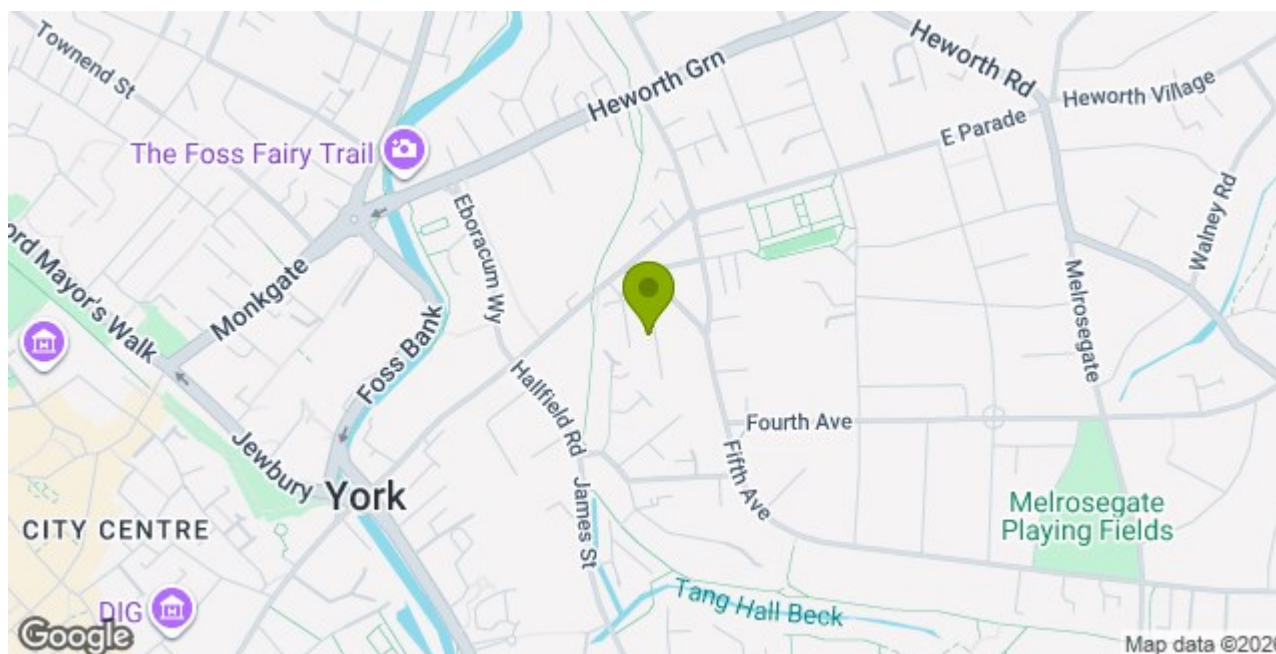
Imagery Disclaimer: Some photographs and videos within these sales particulars may have been digitally enhanced or edited for marketing purposes. They are intended to provide a general representation of the property and should not be relied upon as an exact depiction.

*Download speeds vary by broadband providers so please check with them before purchasing.

Glen Avenue, Heworth, York, YO31 0XN



NOT TO SCALE - FOR ILLUSTRATIVE PURPOSES ONLY
APPROXIMATE GROSS INTERNAL FLOOR AREA 1254 SQ FT / 116.5 SQ M - (Excluding Garage)
All measurements and fixtures including doors and windows are approximate and should be independently verified.
www.exposurepropertymarketing.com © 2026



Stephensons

York	01904 625533
Knaresborough	01423 867700
Selby	01757 706707
Boroughbridge	01423 324324
Easingwold	01347 821145
York Auction Centre	01904 489731
Haxby	01904 809900

Partners

J F Stephenson MA (cantab) FRICS FAAV
I E Reynolds BSc (Est Man) FRICS
R E F Stephenson BSc (Est Man) MRICS FAAV
N J C Kay BA (Hons) pg dip MRICS
O J Newby MNAEA
J E Reynolds BA (Hons) MRICS
R L Cordingley BSc FRICS FAAV
J C Drewniak BA (Hons)

Associates

N Lawrence

