

Maplefield, Biggerstaff Street, Finsbury Park, N4 3FH

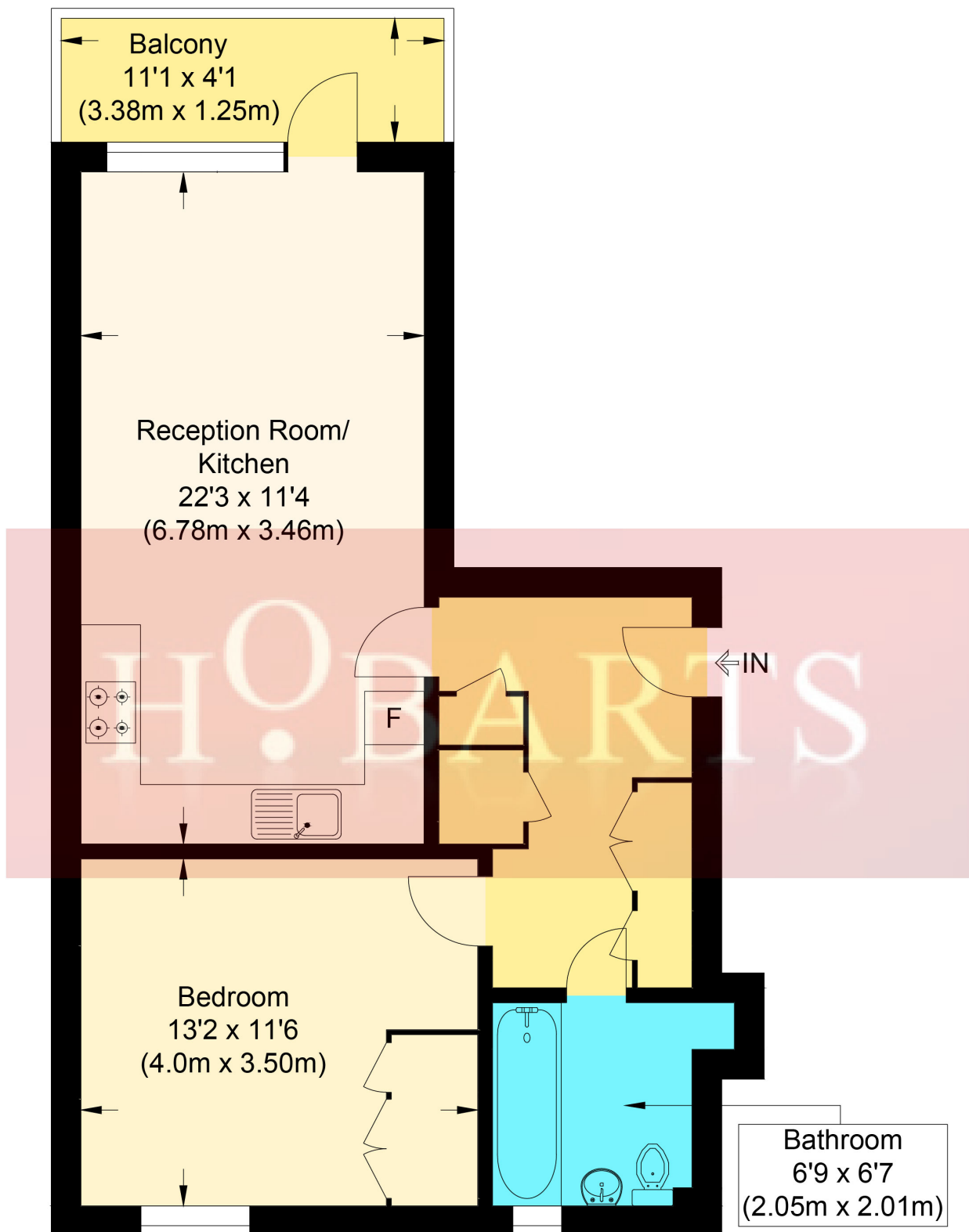
Asking Price £375,000

Bright and airy one-bedroom apartment, set within sought after modern development. Perfectly positioned just moments from Finsbury Park Station and the area's vibrant mix of cafés, restaurants, and green open spaces. Offering a bright open-plan living space, sleek contemporary kitchen with modern Bosch appliances, and ample storage space throughout. Further benefits include a private balcony, secure bike storage, and access to a gated communal outdoor area. Offered chain-free.

Hobarts Estate Agents  
23 Ferme Park Road, Stroud Green, London, N4 4DS  
stroudgreen@hobarts.co.uk  
www.hobarts.co.uk  
442083429000



- Modern new build
- Fully fitted kitchen
- Balcony off reception room
- Bike shed
- Finsbury Park transport hub minutes away
- One double bedroom
- Open plan kitchen reception room
- Modern bathroom with shower
- Communal gated outdoor space
- Shopping and amenities of Finsbury Park and Holloway close by



## Maplefield

Approximate Gross Internal Floor Area : 52.90 sq m / 569.41 sq ft

Illustration for identification purposes only, measurements are approximate, not to scale.



Score	Energy rating	Current	Potential
92+	A		
81-91	B	82 B	82 B
69-80	C		
55-68	D		
39-54	E		
21-38	F		
1-20	G		

**Tenure:**

Leasehold

**Ground rent:**

**Service Charges:**

**Local Authority:**

**Viewings:**

Strictly by appointment via  
HOBARTS ESTATE AGENTS  
442083429000

**Contact:**

23 Ferme Park Road, Stroud  
Green, London, N4 4DS

stroudgreen@hobarts.co.uk  
www.hobarts.co.uk



These property details, including measurements, floor plans and items depicted in photographs etc. are intended only as a brief guide to prospective purchasers and are not intended to be relied upon for any purpose whatsoever. Any interested party should satisfy themselves by inspection or otherwise as to the correctness of each statement contained in these details.