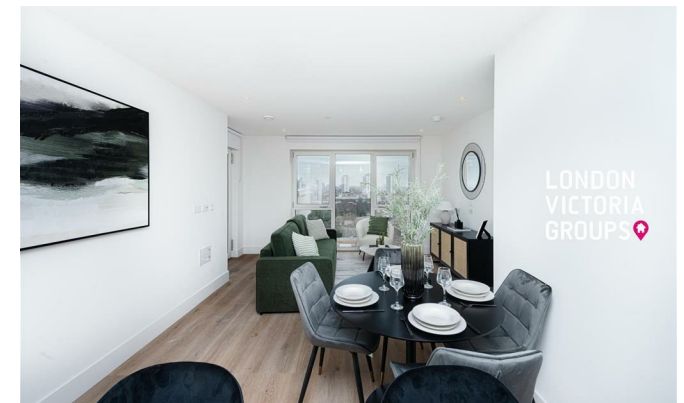


**LONDON
VICTORIA
GROUPS** 



Bow View Apartments, 2 Maple Mews

, London E3 4BH

- One-bedroom, one-bathroom apartment
 - Concierge service
 - Landscaped communal gardens
- Bow Road Station – District & Hammersmith & City Lines
- Open-plan living and dining area
 - Residents' gym
- Secure entry system and lift access
 - EPC-B

£2,450 Per Month

Local Authority
Council Tax Band **New Build**
EPC Rating **B**



London Office Office
Spaces Victoria, 25 Wilton Road, Pimlico,
London, SW1V 1LW

Contact
020 3084 3094
XL@londonvictoriagroups.co.uk
www.londonvictoriagroups.co.uk

Agents Note: Whilst every care has been taken to prepare these particulars, they are for guidance purposes only. All measurements are approximate and for general guidance purposes only and whilst every care has been taken to ensure accuracy, they should not be relied upon and potential buyers/tenants are advised to recheck the measurements.