

5 Little Dean Court, Winton Hill, Stockbridge, Hants SO20 6HL



We are proud to present

5 Little Dean Court

Winton Hill, Stockbridge, Hants SO20 6HL

A delightful one bedroom town house with garage, parking and south facing balconies, one with direct garden access, just a short walk from the High Street.

- Open Plan kitchen/Living Area
 - Idyllic and Peaceful Setting
 - One Bed House
- Garage and Parking Space in Front
 - Stunning Countryside Views
- Short Walk to Stockbridge High Street
 - Ideal Lock up and Leave
- South Facing Balcony out onto Gardens
 - Additional Bedroom Balcony
 - Visitor Parking



Myddelton
& Major



The Property

5 Little Dean Court is a delightful mid terrace town house enjoying an idyllic setting within the grounds of a converted country manor house. The manor house was divided into apartments and a modern addition added to the property of which number 5 is one. Being one of the few houses there, the property benefits from its own front door leading up to the kitchen, living / dining area. This is a light and bright space being double aspect and having the French Windows on the southern side, leading out onto the covered balcony. The kitchen and the decoration are modern and beautifully presented meaning you really could just unpack here. This theme continues upstairs, where there is a large bedroom with built in wardrobes, balcony overlooking the pond and gardens beyond and a smart modern bathroom with a shower over the bath and a heated towel rail. Additionally, there is access to the loft.

Note: Share of Freehold and Lease of 999 years was granted in 2014. There is an annual service charge of £1,600.



Garden & Grounds

Only a short walk from Stockbridge High Street is the entrance to Little Dean House, a magnificent period manor house converted into apartments with stunning communal gardens. This apartment forms part of a newer block of apartments known as Little Dean Court, which has been built in the grounds of the manor house. No 5 has the benefit of having direct garden access from its balcony, where you can walk around the extensive and beautifully maintained grounds. There is allocated parking for one car outside your front door and garage, with a separate car park for visitors. The garage does provide space for parking within as well as some useful storage space and a sink unit, to which a washing machine and tumble drier can be plumbed in.





Location & Amenities

5 Little Dean Court is situated in a prime position to enjoy all the benefits of historic Stockbridge with its independent shops, bars and restaurants. Wonderful countryside walks are within minutes from the property including Stockbridge Common and the Test Way. The Cathedral City of Winchester is a 20 minute drive from the property and Salisbury is within a 30 minute drive, both offering extensive amenities, leisure activities and restaurants. Winchester train station is 8.5 miles distance providing a fast train service to London Waterloo in 45 minutes.

Additional Information

Directions:

Postcode: SO20 6HL

What3words: ///rollover.copy.ringside

Services:

Mains water, drainage and electricity. Electric storage heating.

Tenure:

Leasehold

Council Tax Band:

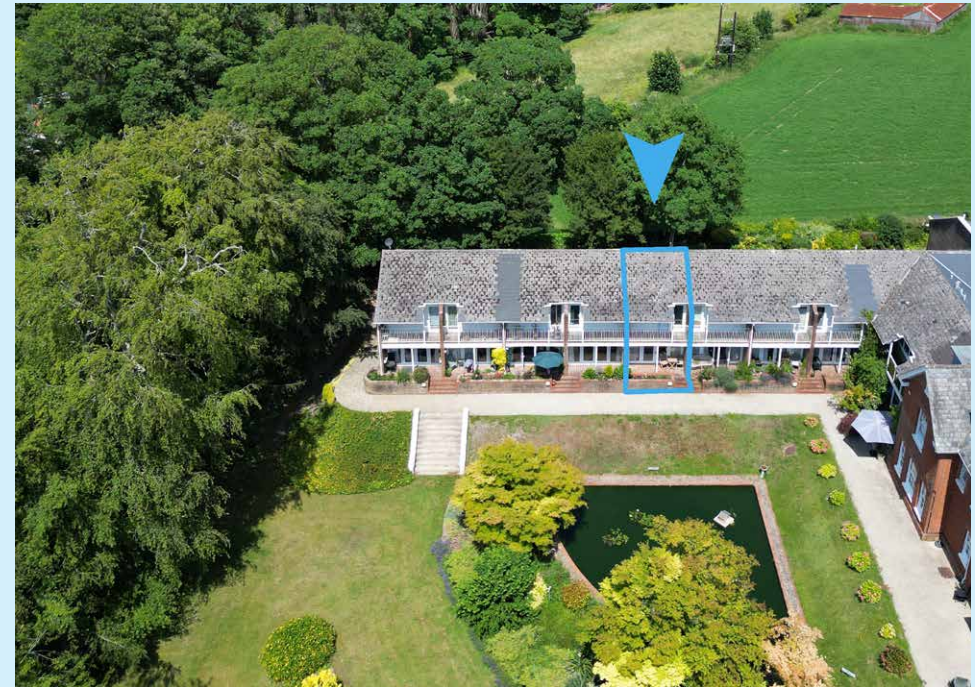
C

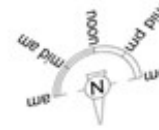
EPC Rating:

E (47)

Square Footage:

743 sq ft





First Floor

Second Floor

Ground Floor



Total area: approx. 69.0 sq. metres (743.1 sq. feet)

COPYRIGHT CLEARPLANZ

Plan for illustration only. Windows and doors are approximate. Whilst care is taken preparing this plan, please check details before making decisions reliant upon them.
Measured and drawn to RICS guidelines



Myddelton
& Major™

Contact

Call: 01264 810 400

Email: stockbridgeresidential@myddeltonmajor.co.uk

Click: myddeltonmajor.co.uk

Visit: 2 Clarendon Terrace, High Street, Stockbridge, Hampshire, SO20 6EY