



Flat 2, Pelham Crescent, Nottingham
£850 pcm

 **Comfort**
Estates



Flat 2

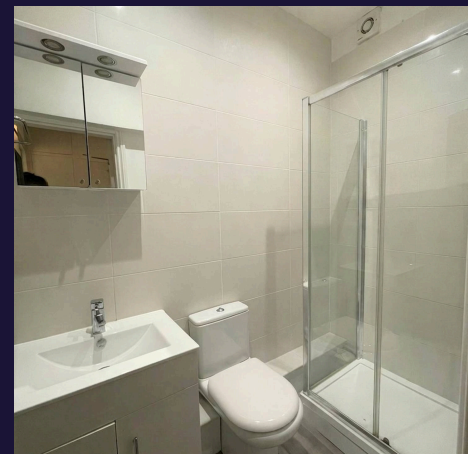
Pelham Crescent, Nottingham

The property is offered fully furnished and comprises a double bedroom, a modern bathroom, a fitted kitchen with appliances, and a bright open-plan living and dining area. A patio door and large window allow an abundance of natural light to fill the living space while providing direct access to the beautifully maintained south-facing communal gardens. Immediately outside the apartment is a small private patio area, offering the perfect spot to enjoy a morning coffee or relax outdoors. The property further benefits from one allocated parking space within the grounds of the development. Residents also enjoy exceptionally well-maintained communal areas, with regular cleaning and gardening services provided. For added convenience, the rent is inclusive of The Park Estate fees.

Ideally located, the property is just a short walk from Nottingham City Centre, with excellent access to bus, tram, and rail links. The Park Estate offers the unique benefit of peaceful, leafy surroundings while remaining within easy reach of the city's shops, cafés, restaurants, bars, and leisure facilities.

Available from 15th August 2026, this superb apartment is ideally suited to a professional individual seeking a tranquil home in one of Nottingham's most desirable locations. Early viewing is highly recommended.

Comfort Estates are delighted to present this one-bedroom ground floor apartment, situated on the quiet and highly sought-after Pelham





Lounge/Diner

18' 8" x 11' 3" (5.70m x 3.44m)

Spacious open-plan living and dining area, furnished with a sofa, shelving unit, mirror, and dining table with chairs. Floor-to-ceiling windows and a patio door flood the room with natural light, while the high ceilings and neutral décor enhance the bright and airy feel. A feature fireplace provides an attractive focal point, adding warmth and character to this impressive living space.

Kitchen

7' 2" x 4' 5" (2.19m x 1.34m)

Located just off the living area, the well-appointed kitchen is both practical and functional, offering everything needed for everyday living. It features a range of wooden wall and base units, providing ample storage, alongside generous worktop space for food preparation. Appliances include a fridge/freezer, washing machine, gas hob, oven, and extractor fan. Finished in neutral tones with laminate flooring, white walls, and beige tiled splashbacks, the kitchen offers a clean and easy-to-maintain space.

Bedroom

13' 2" x 6' 10" (4.01m x 2.09m)

Double bedroom featuring high ceilings and neutral décor, creating a bright and airy feel. The room is furnished with a double bed and mattress, bedside table, and generous built-in storage, offering both comfort and practicality.

Bathroom

6' 10" x 4' 2" (2.09m x 1.28m)

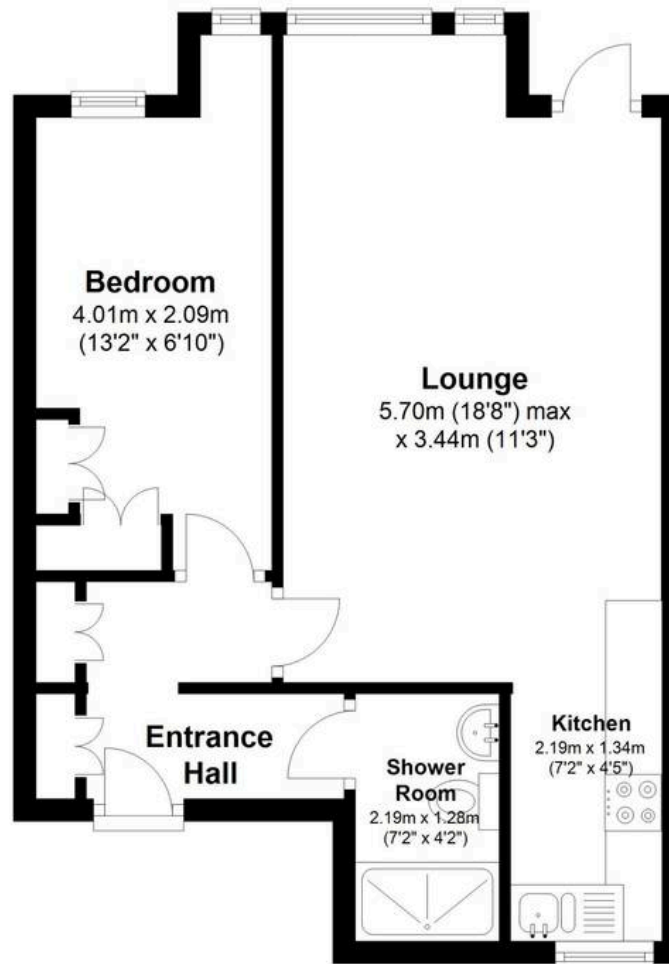
Contemporary bathroom fitted with a shower cubicle, WC, wash basin and mirrored wall cabinet. Finished with sleek grey wall tiles, the room offers a stylish and modern feel while remaining practical and easy to maintain.



Comfort Estates

Ground Floor

Approx. 38.9 sq. metres (418.2 sq. feet)



Total area: approx. 38.9 sq. metres (418.2 sq. feet)



Comfort Estates

Comfort Estates, 47 Derby Road - NG1 5AW

0115 933 8997 • info@comfortestates.co.uk • www.comfortestates.co.uk