

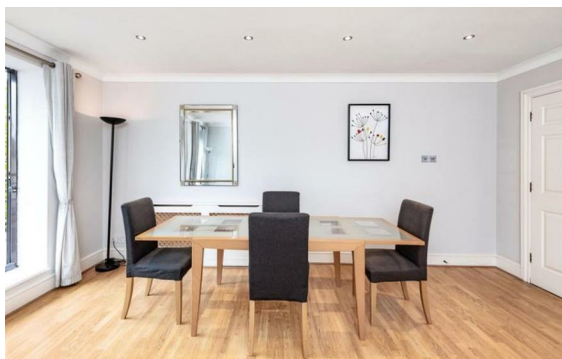


Thames Avenue, Chelsea Harbour, London, SW10

Rent £1,495 Per Month

2 Bed | 2 Bath | 1 Reception

Please call us on 020 7724 2233 or email us info@newingtonstates.com to book a viewing.



60 Upper Montagu Street

London

W1H 1SN

020 7724 2233

info@newingtonstates.com

A spacious two-bedroom apartment set along the River Thames, offering beautiful views, a private balcony, and a well-balanced layout in one of London's most desirable locations. The property features a generous reception room with access to the balcony, a separate fully fitted kitchen, and two well-proportioned double bedrooms.

Ideally located in Chelsea, the property benefits from excellent transport links including Sloane Square Station and South Kensington Station. River bus services along the River Thames also provide an alternative and scenic commute, while a wide range of cafés, restaurants, and boutiques are within easy reach.

EPC rating: B

Energy Efficiency Rating: B

Agents Note: Whilst every care has been taken to prepare these particulars, they are for guidance purposes only. All measurements are approximate and are for general guidance purposes only and whilst every care has been taken to ensure their accuracy, they should not be relied upon and potential buyers/tenants are advised to recheck the measurements.

<http://www.newingtonstates.com>