





Home Close, Broxbourne, EN10 6EJ

Westwood Leber is thrilled to introduce this exceptional five-bedroom, four-bathroom end-of-terrace family home, ideally positioned within the sought-after Home Close in Broxbourne, presented in modern decorative order throughout and offering versatile accommodation arranged over three floors.

The ground floor welcomes you with a spacious entrance hall leading to a generous living room, perfect for family relaxation. To the rear sits an impressive open-plan kitchen/diner, thoughtfully designed to serve as the heart of the home, providing ample space for both everyday living and entertaining. The ground floor further benefits from a utility room and a ground-floor bedroom, ideal for guests, multigenerational living or home working.

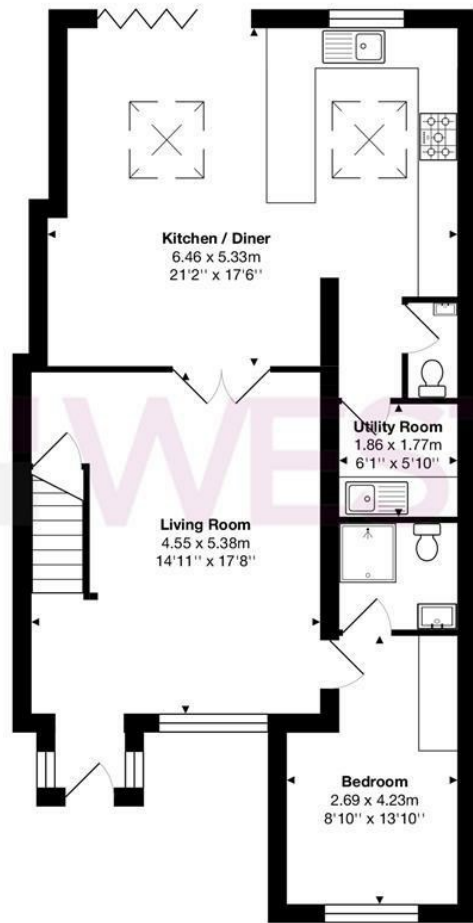
The first floor hosts several well-proportioned bedrooms, including a principal suite complemented by dressing facilities and en-suite bathroom, along with additional bedrooms serviced by modern bathrooms. A further bedroom and bathroom occupy the second floor, offering excellent flexibility for growing families, teenagers or guests.

Externally, the property features a beautifully landscaped rear garden with a versatile outbuilding, ideal as a home office, gym or studio. To the front is a large driveway providing parking for three or more vehicles, complemented by a garage on block offering further storage and parking.

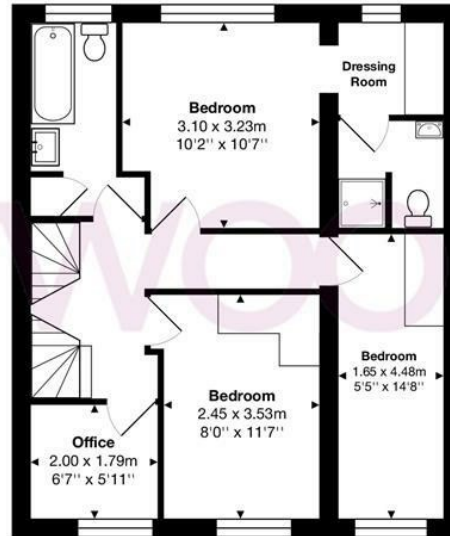
Ideally positioned close to local amenities, schools and transport links, this is a superb family home and early viewing is highly recommended.



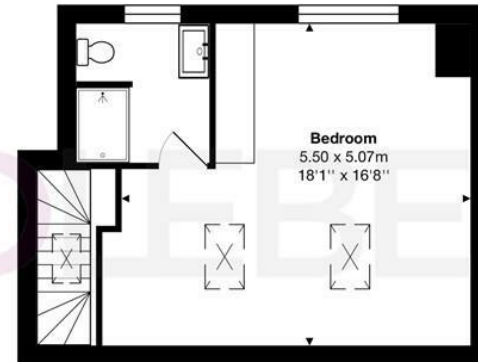
WESTWOODLEBER



Ground Floor



First Floor



Second Floor

Total Area: approx. 163.5 m² ... 1760 ft²

THE FLOORPLAN IS FOR ILLUSTRATIVE PURPOSES ONLY AND IS NOT TO SCALE.
Measurements and features are approximate and may differ from the actual property. Verify all details independently; no liability is accepted for errors or omissions.

Property marketing provided by www.fotomarketing.co.uk







WESTWOODLEBER



WESTWOODLEBER



WESTWOODLEBER



WESTWOODLEBER







