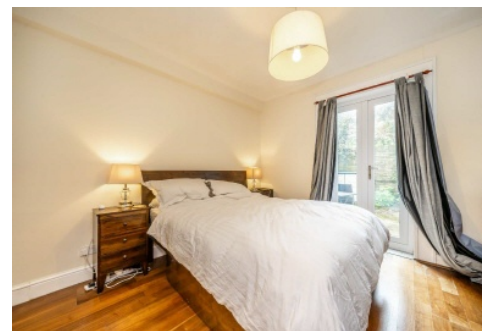


SNELLERS

ESTATE AGENTS



St. Margarets Road, TW1

£479,950

A spacious split-level one-bedroom garden flat in the heart of St Margarets, offering bright and well-presented accommodation throughout. The property features a large reception room, a modern kitchen/diner, and a generously sized bedroom with built-in storage and direct access to a private south-facing garden. With an abundance of natural light throughout, this home provides a warm and inviting living space in a highly desirable location.

Ideally located on St Margarets Road, the property is just 0.3 miles from St Margarets railway station and the heart of St Margarets village, offering a wonderful selection of boutique shops, cafés, and restaurants. Richmond town centre and the beautiful River Thames are also just a short walk away in the opposite direction, providing excellent access to both local amenities and scenic riverside walks.

- Prime Location • South-Facing Private Garden • Wooden Floors •
- Light & Airy Throughout •

SNELLERS

ESTATE AGENTS

Ground Floor



Total area: approx. 51.3 sq. metres (551.9 sq. feet)

Snellers St. Margarets Sales
36 Crown Road
St Margarets
TW1 3EH
020 8892 8008
stmargaretssales@snellers.co.uk

Energy Rating: D We aim to make our particulars both accurate and reliable. However they are not guaranteed; nor do they form part of an offer or contract. If you require clarification on any points then please contact us, especially if you're traveling some distance to view. Please note that appliances and heating systems have not been tested and therefore no warranties can be given as to their good working order