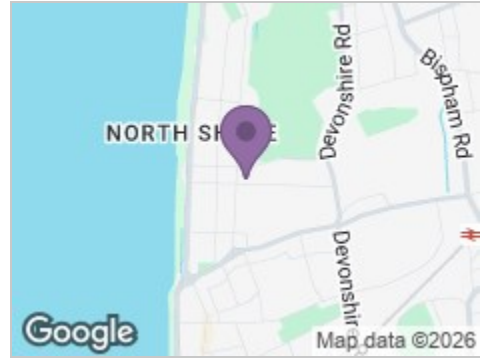


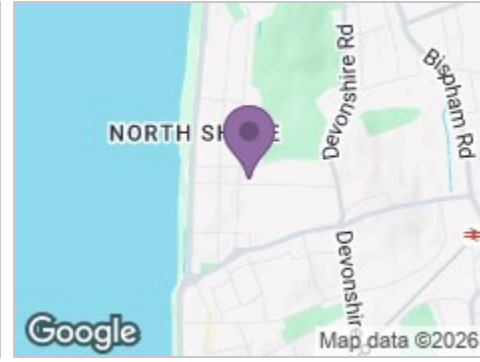
Road Map



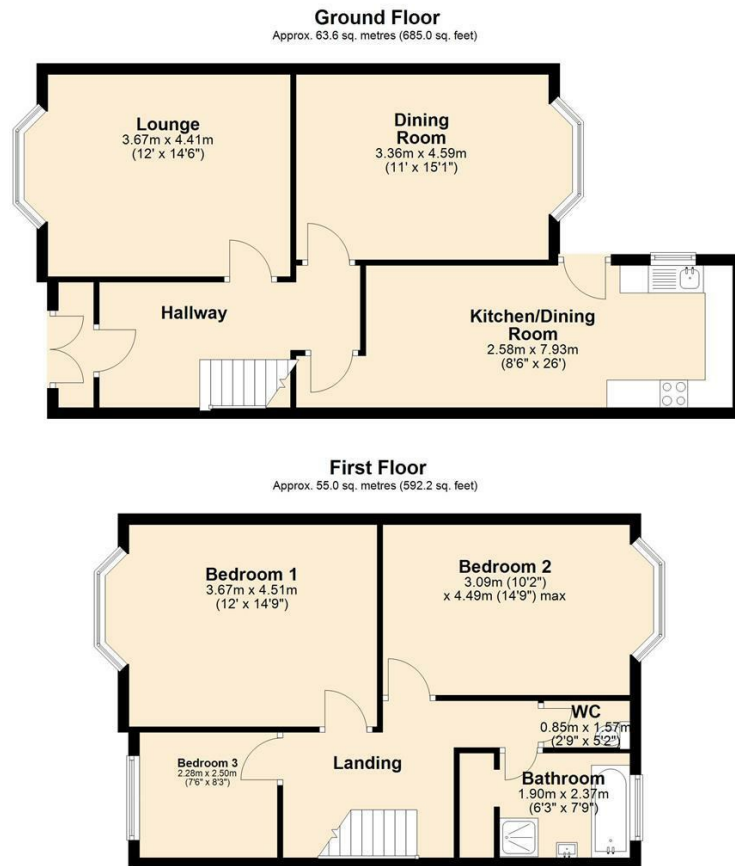
Hybrid Map



Terrain Map



Floor Plan



73 Cornwall Avenue
, Blackpool, FY2 9QL

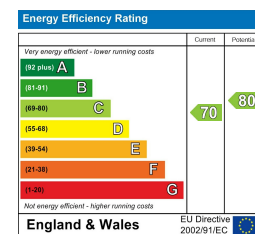
Offers In The Region Of £157,500 C

Viewings

Please contact our iMove Sales & Lettings Office on 01253 883311 if you wish to arrange a viewing appointment for this property or require further information.

These particulars, whilst believed to be accurate are set out as a general outline only for guidance and do not constitute any part of an offer or contract. Intending purchasers should not rely on them as statements of representation of fact, but must satisfy themselves by inspection or otherwise as to their accuracy. No person in this firm's employment has the authority to make or give any representation or warranty in respect of the property.

Energy Efficiency Graph



Make your next move with... imove

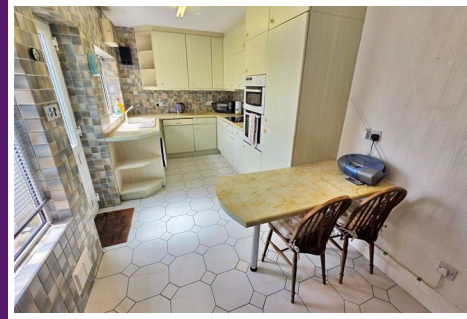
Call us now on 01253 883311
hello@imovetoday.co.uk



73 Cornwall Avenue

, Blackpool, FY2 9QL

Offers In The Region Of £157,500



Porch

Door to front leading into property from front driveway. Internal door leading into Hallway. Meter cupboard.

Lounge

14'5" x 12'0"
UPVC double glazed bay window to front. Carpet, ceiling light and radiator.

Dining Room

15'0" x 11'0"
UPVC double glazed bay window to rear. Carpet, ceiling light and radiator.

Kitchen/Dining Room

26'0" x 8'5"
Door to side providing access to rear garden. Opening dining area leading to kitchen. UPVC double glazed window to side. Range of wall and base units with complimentary worktop above. Composite sink and drainer. Double oven. Ceramic hob with concealed extractor above. Integral dishwasher. Plumbed for washing machine. Integral fridge and freezer. Tiled floor, ceiling lights and radiator to kitchen area.

First Floor Landing

Double glazed window to rear. Access to all first floor rooms. Loft access. Carpet and ceiling light.

Bedroom One

14'9" x 12'0"
UPVC double glazed bay window to front. Fitted wardrobes. Carpet, ceiling light and radiator.

Bedroom Two

14'8" x 10'1"
UPVC double glazed bay window to rear. Fitted wardrobes. Carpet, ceiling light and radiator.

Bedroom Three

8'2" x 7'5"
UPVC double glazed window to front. Carpet, ceiling light and radiator.

WC

5'1" x 2'9"
UPVC double glazed opaque window to rear. Low flush WC. Tiled flooring and ceiling light.

Bathroom

7'9" x 6'2"
UPVC double glazed opaque window to rear. Three piece bathroom suite comprising; panel bath, walk in shower cubicle and low flush WC. Tiled floor, ceiling light and radiator.

Front Exterior

Open Indian paved driveway providing off road parking for two vehicles

Rear Exterior

Small courtyard paved garden. Access to garage.

Double Garage

Up and over door. Power and lighting.

Further Information

Tenure - Freehold
EPC Rating C
Council Tax Band - C - Blackpool Borough Council

