



LUXBOROUGH STREET, W1U

£1,200,000

Three bedrooms
Two bathrooms
Reception room
Kitchen
Excellent ceiling heights
Share of freehold

@marshandparsons
marshandparsons.co.uk

MARSH &
PARSONS



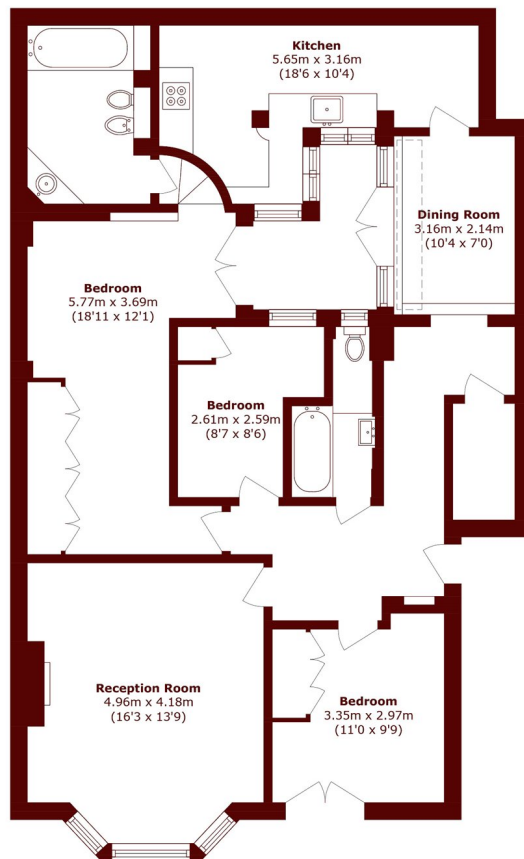
ABOUT THE PROPERTY

A well proportioned flat set within this well kept block located literally moments from Marylebone High Street. Featuring a good ceiling height the property features three bedrooms and two bathrooms as well as a good size reception room and kitchen. With a Share in The Freehold there is also a patio and courtyard.

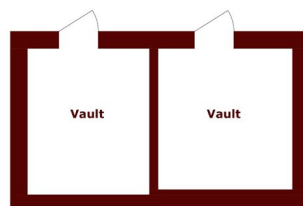
Luxborough Street is literally moments from Marylebone High Street and local travel connections are excellent with the closest underground Station being Baker Street.



STEP INSIDE LUXBOROUGH STREET



Lower Ground Floor



Lower Ground Floor

Total area (approx.): 104.3 sq. m (1122.6 sq. ft)
Vault area (approx.): 11.9 sq. m (128.0 sq. ft)

Marylebone & Mayfair
020 7935 1775

Energy Rating: C We aim to make our particulars both accurate and reliable. However, they are not guaranteed; nor do they form part of an offer or contract. If you require clarification on any points then please contact us, especially if you're traveling some distance to view. Please note that appliances and heating systems have not been tested and therefore no warranties can be given as to their good working order

**MARSH &
PARSONS**