



30 Clydebank Road, Portsmouth

Offers in Region of £240,000

 chinneckshaw



30 Clydebank Road

Portsmouth

This well-presented three-storey townhouse offers flexible and practical living in a convenient central location, close to local amenities and excellent transport links. The ground floor features a well-proportioned kitchen with ample storage and worktop space, along with a useful storage cupboard.

On the first floor, a bright and spacious lounge provides the perfect place to relax or entertain, complemented by a versatile bedroom and a separate WC. The top floor offers two further well-sized bedrooms and a family bathroom, creating comfortable accommodation for a range of lifestyles.

Externally, the property benefits from off-road parking for two vehicles within a secure car port, adding to its everyday convenience.

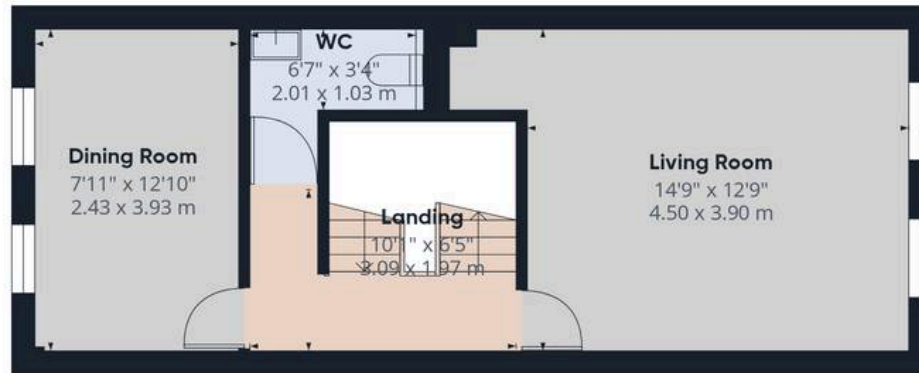
Ideal for families, professionals or investors, this property combines versatility, location and potential, making it a fantastic opportunity.

Material Information • Tenure: Freehold • Council Tax: Band B • Electricity: Mains Supply • Heating: Gas • Water Supply: Mains Supply • Sewage: Mains Supply • Broadband: Standard, Superfast and Ultrafast Fibre are all available in this area • Parking: Off Street /Car Port • Mobile: Ofcom official website checker states that EE, Vodafone, O2 and Three available in the area • Flood Risk: Low Risk

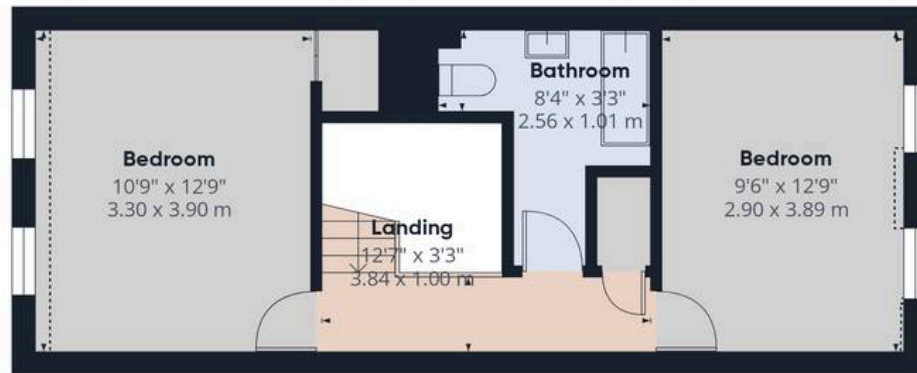




Ground Floor



Floor 1



Floor 2



Approximate total area⁽¹⁾

981 ft²

91 m²

Reduced headroom

7 ft²

0.6 m²

(1) Excluding balconies and terraces

Reduced headroom

----- Below 5 ft/1.5 m

Calculations reference the RICS IPMS 3C standard. Measurements are approximate and not to scale. This floor plan is intended for illustration only.

GIRAFFE360



Chinneck Shaw

Bridge House, Milton Road, Portsmouth – PO3 6AN

023 9282 6731

hello@chinneckshaw.co.uk

www.chinneckshaw.co.uk/

Chinneck Shaw, Bridge House, Milton Road, PO3 6AN Consumer Protection from Unfair Trading Regulations 2008: These details are for guidance only and complete accuracy cannot be guaranteed. If there is any point which is of particular importance, verification should be obtained. They do not constitute a contract or part of a contract. All measurements are approximate. No guarantee can be given with regard to planning permissions or fitness for purpose. No apparatus, equipment, fixture or fitting has been tested. Items shown in the photographs are NOT necessarily included. Interested Parties are advised to check availability and make an appointment to view before travelling to see a property.