

<https://www.fortuneandcoates.co.uk>



FORTUNE & COATES

The People's Estate Agent



FORTUNE & COATES



47 Elwood, Harlow, CM17 9QJ

Guide price £475,000

Guide Price- £475,000-£500,000

Fortune and Coates are pleased to offer to the market this well-presented three-bedroom family home situated in the sought-after location of Elwood, Harlow.

Upon entering, you are welcomed by a porch leading through to a bright and spacious living room, offering a comfortable setting for both relaxing and entertaining. This room seamlessly flows through to the dining room, ideal for family meals or hosting guests, with sliding patio doors leading out onto the rear garden.

The kitchen is well-presented and thoughtfully laid out in a practical U-shape, fitted with a range of modern shaker-style wall and base units offering ample cupboard and worktop space, complemented by a tiled splashback. It features an integrated oven and hob, with plumbing available for a washing machine and dishwasher, along

Living room 11'3" x 15'8" (3.43 x 4.79)

Dining area 8'2" x 13'6" (2.51 x 4.12)

Kitchen 11'3" x 8'2" (3.43 x 2.51)

Garage 8'2" x 17'0" (2.51 x 5.19)

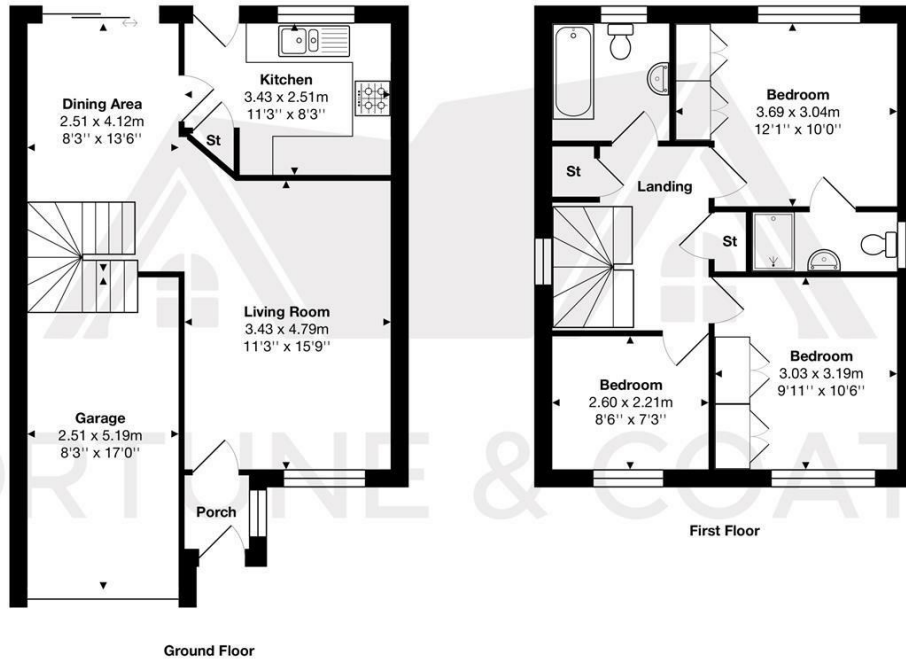
Bedroom 12'1" x 9'11" (3.69 x 3.04)

Bedroom 9'11" x 10'5" (3.03 x 3.19)

Bedroom 8'6" x 7'3" (2.60 x 2.21)

AGENT NOTE: The information provided about this property does not constitute or form part of an offer or contract, nor may it be regarded as representations. All interested parties must verify accuracy and your solicitor must verify tenure/lease information, fixtures & fittings and, where the property has been extended/converted, planning/building regulation consents. All dimensions are approximate and quoted for guidance only as are floor plans which are not to scale, and their accuracy cannot be confirmed. Reference to appliances and/or services does not imply that they are necessarily in working order or fit for the purpose.

Floor Plan

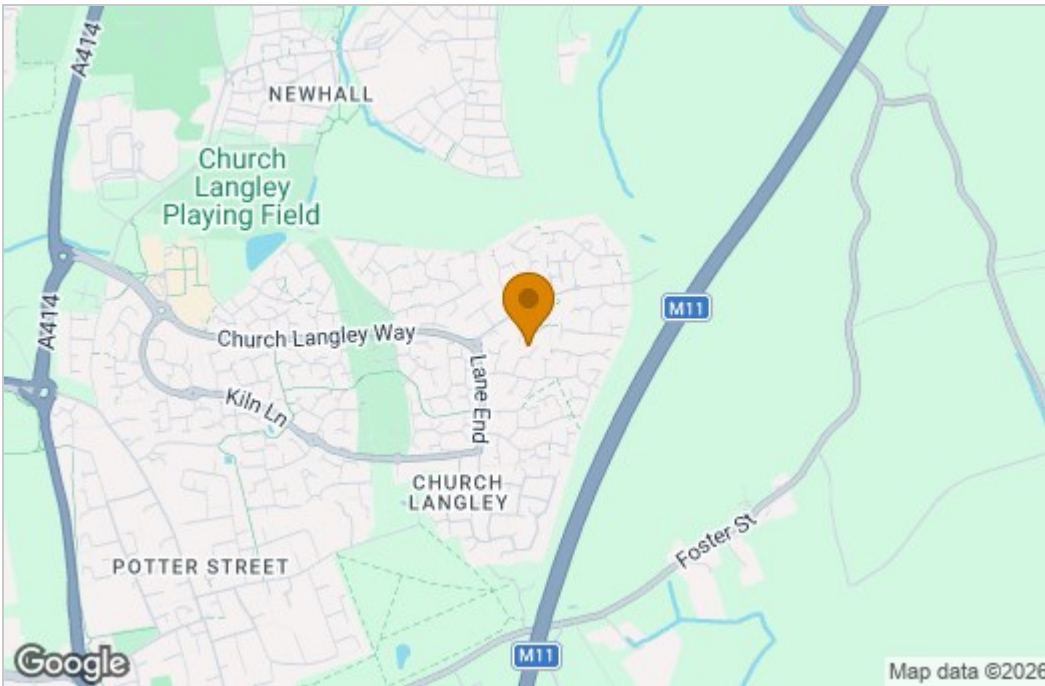


Total Area: approx. 93.8 m² ... 1009 ft²

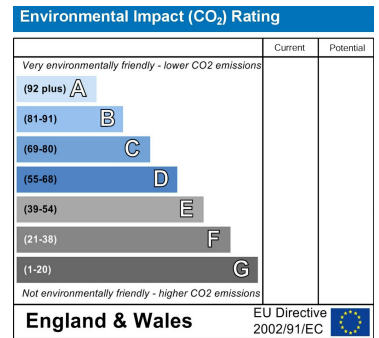
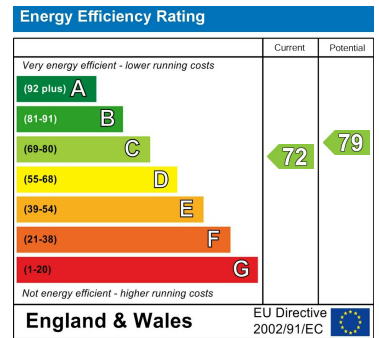
THE FLOORPLAN IS FOR ILLUSTRATIVE PURPOSES ONLY AND IS NOT TO SCALE. Measurements and features are approximate and may differ from the actual property. Verify all details independently; no liability is accepted for errors or omissions.

Property marketing provided by www.fotomarketing.co.uk

Area Map



Energy Efficiency Graph



These particulars, whilst believed to be accurate are set out as a general outline only for guidance and do not constitute any part of an offer or contract. Intending purchasers should not rely on them as statements of representation of fact, but must satisfy themselves by inspection or otherwise as to their accuracy. No person in this firm's employment has the authority to make or give any representation or warranty in respect of the property.