



Guide Price
£300,000

Freehold

3x  1x  1x 

**Sedley Close, Aylesford,
Kent, ME20**

OVER 60?

Secure this property
for up to **59% less!**

Wards
Helping you move forwards



Main features

- Set in a quiet Close
- Sociable lounge/diner - ideal for entertaining
- Lovely secluded rear garden for you to enjoy
- Great opportunity to add your own stamp to this property
- Excellent commuter links - Aylesford rail station close by & the M20 is easily accessible

Accommodation

GROUND FLOOR

Entrance Hall
Lounge/Diner: 23'2 x 8'3 (7.07m x 2.52m)
Kitchen: 10'10 x 7'10 (3.30m x 2.39m)

FIRST FLOOR

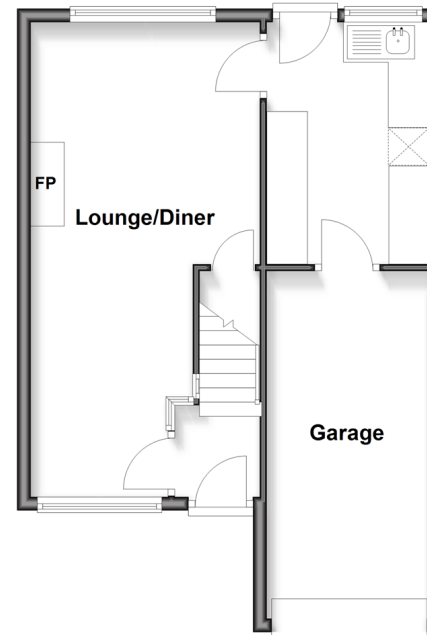
Landing
Bedroom 1: 12'10 x 8'3 (3.91m x 2.52m)
Bedroom 2: 12'10 x 9'11 (3.91m x 3.02m)
Bedroom 3: 13'10 x 8'0 (4.22m x 2.44m)
Bathroom

OUTSIDE

Driveway & Garage
Front & Rear Gardens

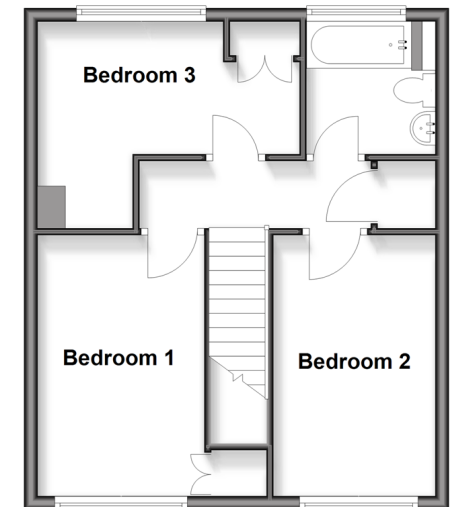
Ground Floor

Approx. 46.3 sq. metres (498.2 sq. feet)



First Floor

Approx. 41.9 sq. metres (451.1 sq. feet)



Call Larkfield - 01732 847877 ■ wardsofkent.co.uk

■ Legal advice should be taken to verify fixtures/fittings, planning, alterations and/or lease details
■ Through a Homewise Home For Life Plan people aged 60+ can secure this property for up to 59% less, by purchasing a Lifetime Lease.

■ Appliances & services are untested, dimensions are approximate and floor plans are not to scale



12935394/20250406/CK/JT