



Nevern Square, SW5

£5,500 Per calendar month

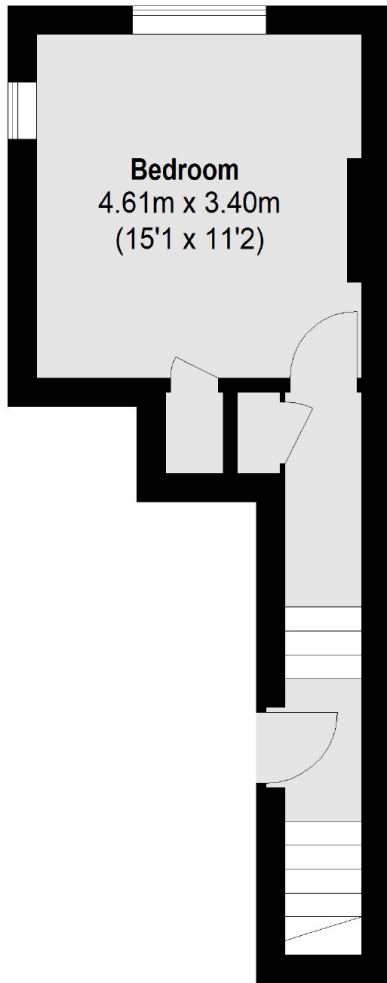
An immaculate recently refurbished three bedroom split level flat located on the sought after Nevern Square. Finished to a high standard throughout and would work perfectly for sharers or a family.

Arguably Earl's Courts premier garden square, Nevern Square is nestled quietly away from the hustle and bustle of Earls Court Road, whilst remaining comfortably within walking distance of the amenities and tube.

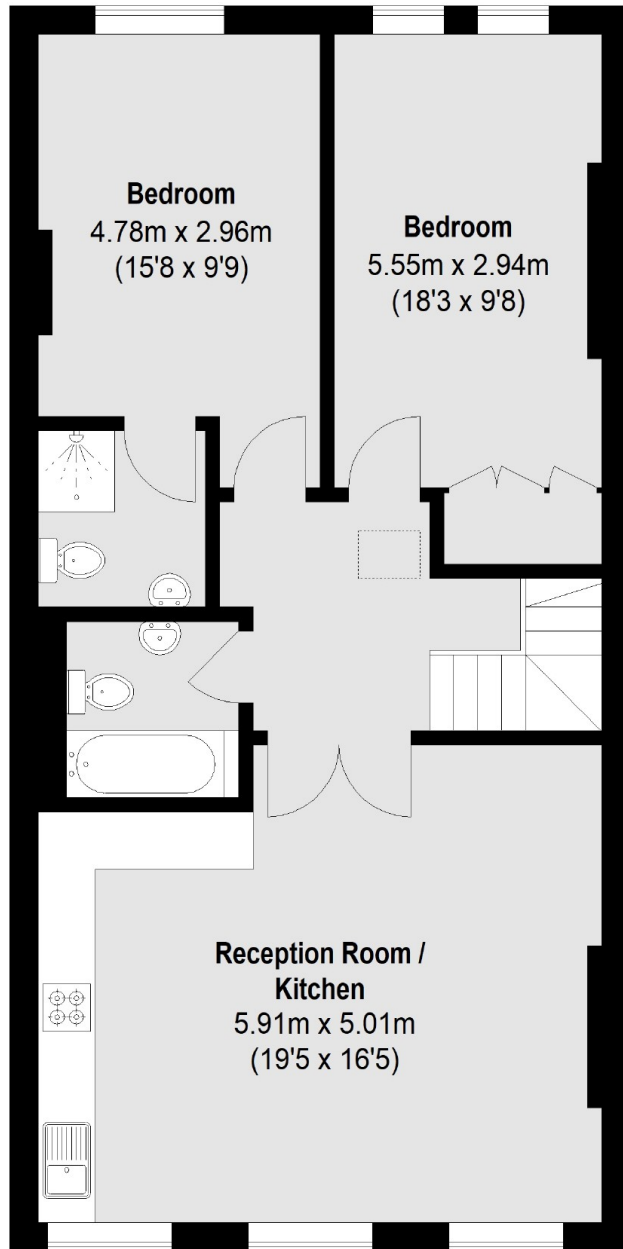
Features

- Three Bedrooms
- Two Bathrooms
- Recently Refurbished
- Open Plan Kitchen
- Split Level
- Excellent Transport

Nevern Square, London, SW5



Third Floor



Fourth Floor

Total area (approx.): 91.95 sq. m (990 Sq. ft)