



Airlie Gardens, W8

£550,000

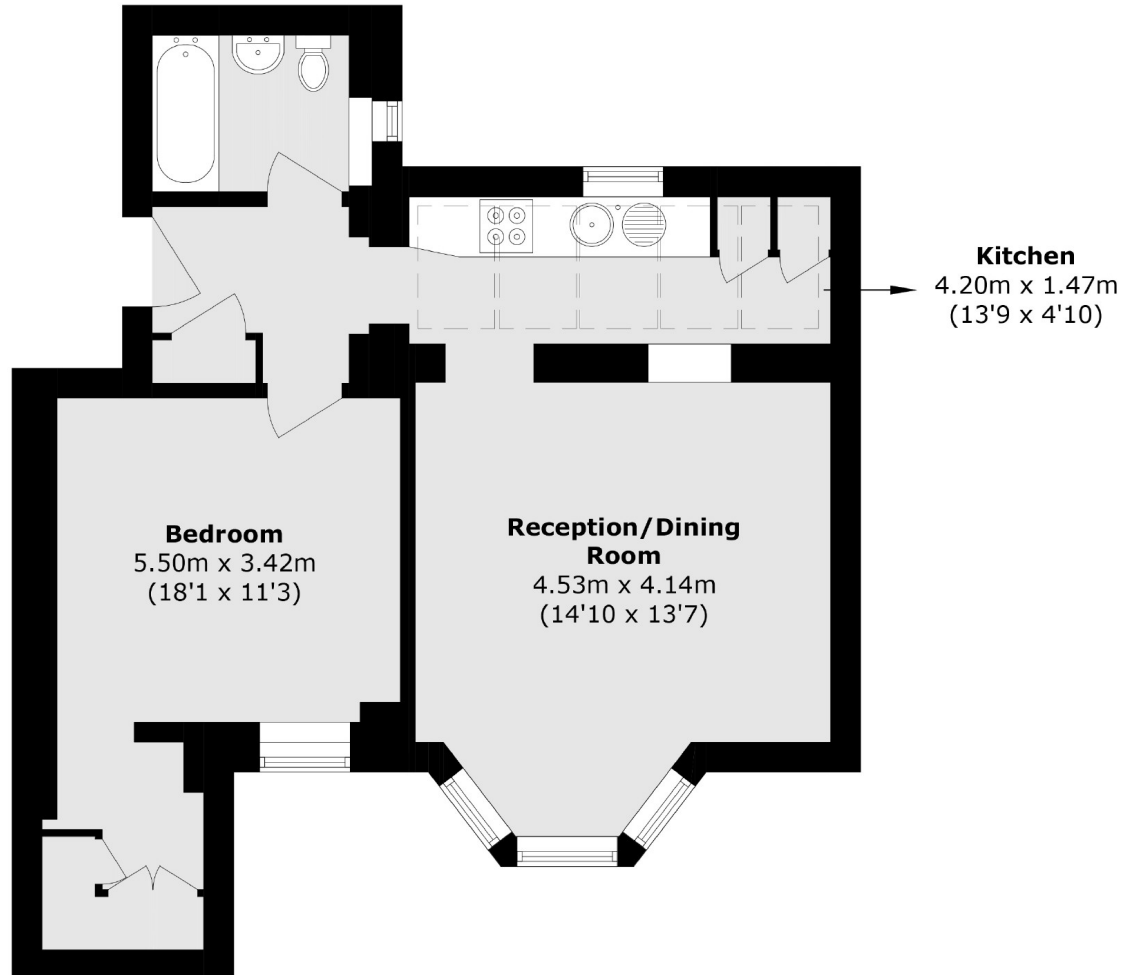
A charming one bedroom apartment in an impressive Victorian mansion block, with access to beautiful secluded private communal gardens. The apartment is well-proportioned and offers good natural light from skylights in the kitchen. There are also high ceilings and wooden flooring throughout.

Airlie Gardens is a pretty cul-de-sac close to Fox Primary School and the green spaces of Kensington Gardens and Holland Park with plenty of first class amenities close by in Hillgate Village, Notting Hill Gate and Holland Park.

Features

- One Bed
- Semi Open Plan Kitchen
- High Ceilings
- Wooden Flooring
- Communal Gardens
- Kensington

Airlie Gardens, London, W8



Total area (approx.): 49 sq. m (527.4 sq. ft)