



Benson Bunch



Bespoke Property Consultancy  
Residential Letting and Sales

## Lowood Place, Wilmslow

Wilmslow, SK9 6GN

£12,000 Per Month

- All 4 bedrooms with Ensuites
- High specification
- Garage
- Recently built
- Principal suite with dressing area & ensuite
- Open-plan Kitchen
- Modern design
- Landscaped grounds
- Surrounded by 60 acre green belt land
- Furnished

# PROPERTY SUMMARY

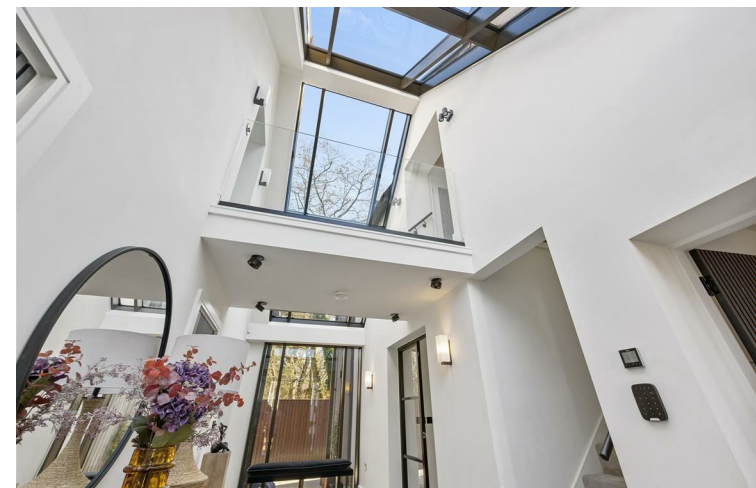
Lowood Place in Wilmslow is an exclusive development of only 14 detached homes, it is surrounded by 60 acres of green belt bringing you close to nature.

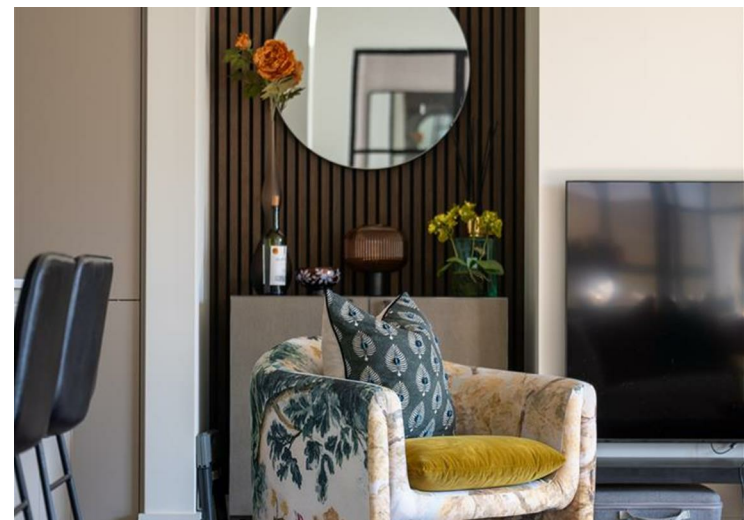
'The Maple' design provides over 3000 sqft of living accommodation, consisting of four bedrooms, four bathrooms, all of which are en-suites. The principal and second bedroom both have a beautiful dressing room and en-suite too. Whilst another bedroom features a private terrace.

This detached property features an open-plan kitchen/living and dining space with an integrated double garage.

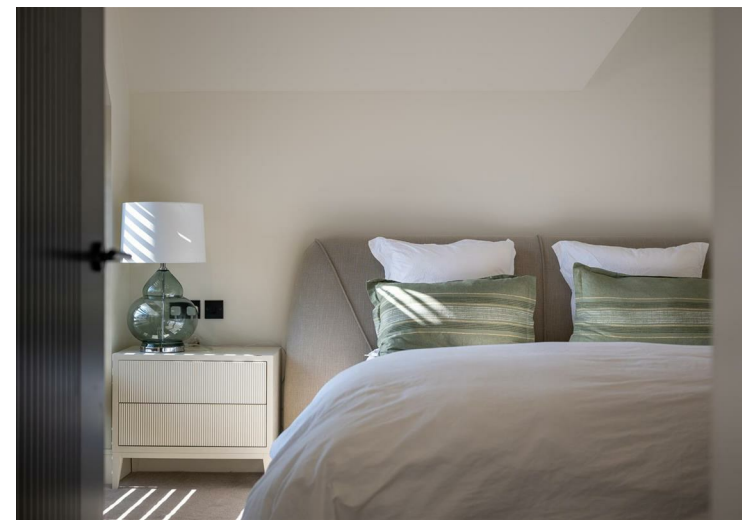
Lowood is conveniently located 2.0 miles from Wilmslow train station.

Please also note these photos are of the show-property and are used for a reference only, furnishings will vary.











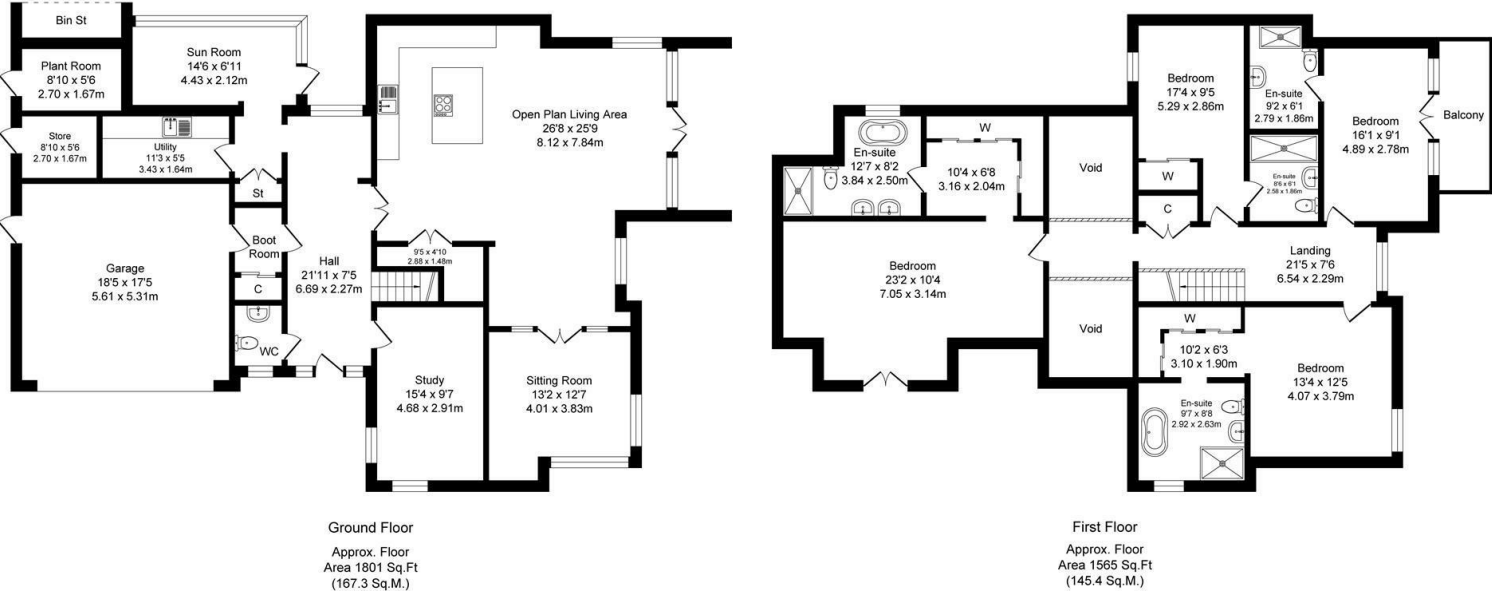
Council Tax Band:  
Tax Band G

Tenure:

Local Authority:  
Cheshire East

Lowood place, Wilmslow  
Total Approx. Floor Area 3366 Sq.ft. (312.7 Sq.M.)

Surveyed and drawn by Lens Media for illustrative purposes only. Not to scale. Whilst every attempt was made to ensure the accuracy of the floor plan, all measurements are approximate and no responsibility is taken for any error.



Energy Efficiency Rating		Current	Potential
Very energy efficient - lower running costs			
(92 plus)	A		
(81-91)	B	84	88
(69-80)	C		
(55-68)	D		
(39-54)	E		
(21-38)	F		
(1-20)	G		
Not energy efficient - higher running costs			
<b>England &amp; Wales</b>		EU Directive 2002/91/EC	

**Agents Note:** Whilst every care has been taken to prepare these sales particulars, they are for guidance purposes only. All measurements are approximate are for general guidance purposes only and whilst every care has been taken to ensure their accuracy, they should not be relied upon and potential buyers are advised to recheck the measurements



**Cheshire Office:**

Blackbox  
Bech Lane  
Wilmslow  
Cheshire SK9 5ER

**Email:**

sales@benzonbunch.co.uk

**Telephone:**

01625 523605

**Website:**

www.bensonbunch.co.uk