



Surrey Road, SE15

£600,000

Set within an attractive property, this beautifully refurbished first-floor maisonette offers stylish, turn-key living with exceptional future potential and has a south-east facing sunny garden.

Perfectly positioned for both Nunhead and Honor Oak Park stations, with frequent services to Victoria, Blackfriars, City Thameslink, Farringdon and St Pancras. The open green spaces of Peckham Rye Park and the natural beauty of Nunhead Cemetery are also within easy reach.

Features

- First Floor Maisonette
- South East Facing Garden
- Planning Permission For Loft
- Open Plan Living
- Excellent Transport Links
- Recently Refurbished

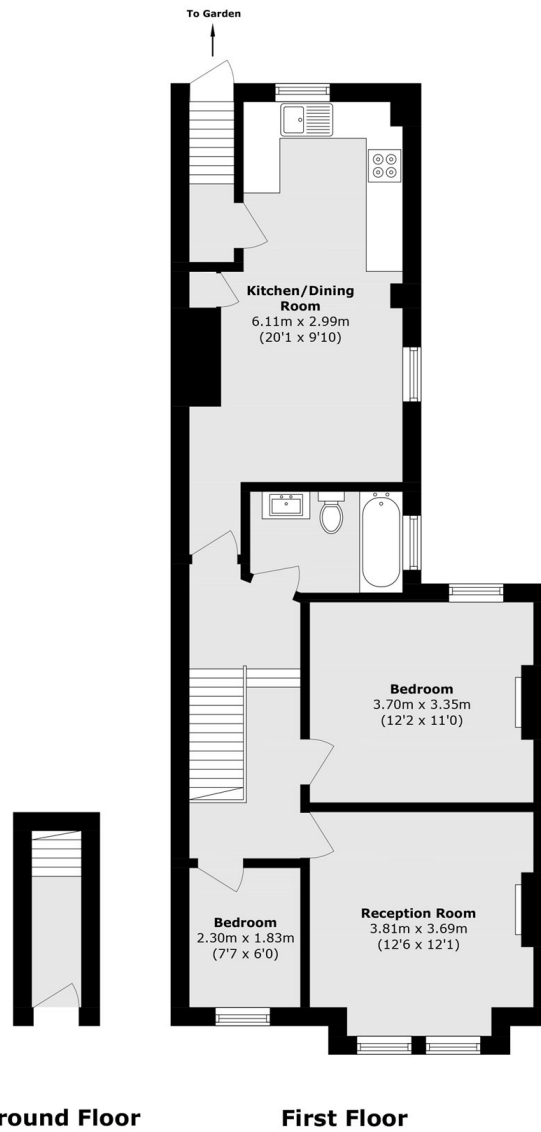


Surrey Road, SE15

The property has undergone an extensive renovation, including brand new windows, updated electrics, new flooring throughout, a newly fitted kitchen and bathroom, and a modern heating system providing peace of mind as well as contemporary comfort. The bright and spacious open-plan living area is ideal for modern living and entertaining, while two bedrooms offer flexible accommodation for couples, professionals or young families. Importantly, the property benefits from planning permission for a loft conversion to create two additional bedrooms and a bathroom significantly increasing both living space and long-term value. A particular highlight is the generous private south-east facing garden, enjoying excellent natural light and private rear access. The garden presents a wonderful outdoor retreat with a low maintenance finish.



Surrey Road, London, SE15



Total area (approx.): 70.1 sq. m (754.5 sq. ft)