



## Beulah Hill, SE19

£425,000

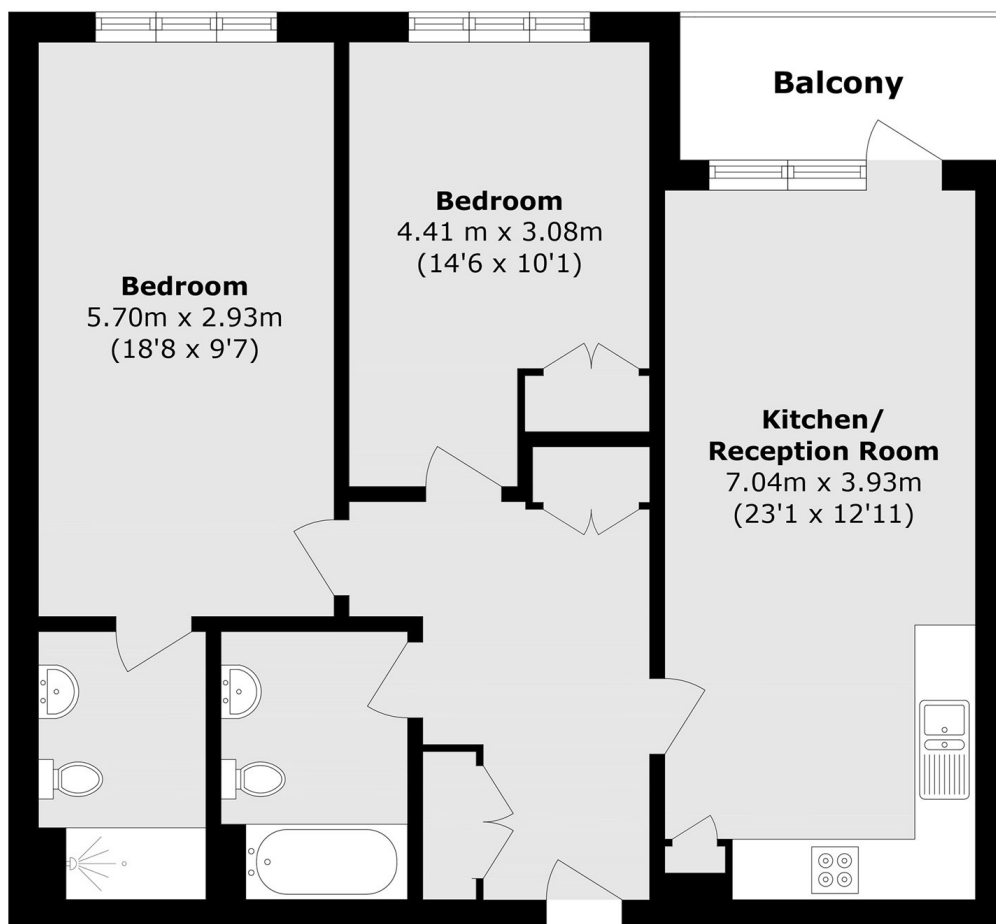
Extending to over 800 sq ft of internal space, this airy and well-proportioned two double bedroom apartment enjoys an abundance of natural light and offers elegant modern living throughout. The property benefits from two sleek bathrooms and a thoughtfully arranged open-plan kitchen and reception room, leading onto a private balcony ideal for relaxing or enjoying the sun.

Beulah Hill is situated between Crystal Palace and Streatham Common and is located between the green spaces of Norwood Grove and Upper Norwood Recreation Ground.

### Features

- Chain Free
- Private Balcony
- Immaculate Condition
- Over 800sqft
- Spacious Flat
- Two Double Bedrooms

# Beulah Hill, London, SE19



Total area (approx.): 74.5 sq. m (801.9 sq. ft)

Balcony area (approx.): 4.9 sq. m (52.7 sq. ft)