



Devons Road, E3

£450,000

Situated within a modern development on Devons Road, this two-bedroom apartment offers approximately 756 sq ft living space together with views of Canary Wharf. The property features a spacious open-plan reception, dining and kitchen area with floor-to-ceiling windows opening onto a private balcony. It further benefits from two double bedrooms, two bathrooms and storage

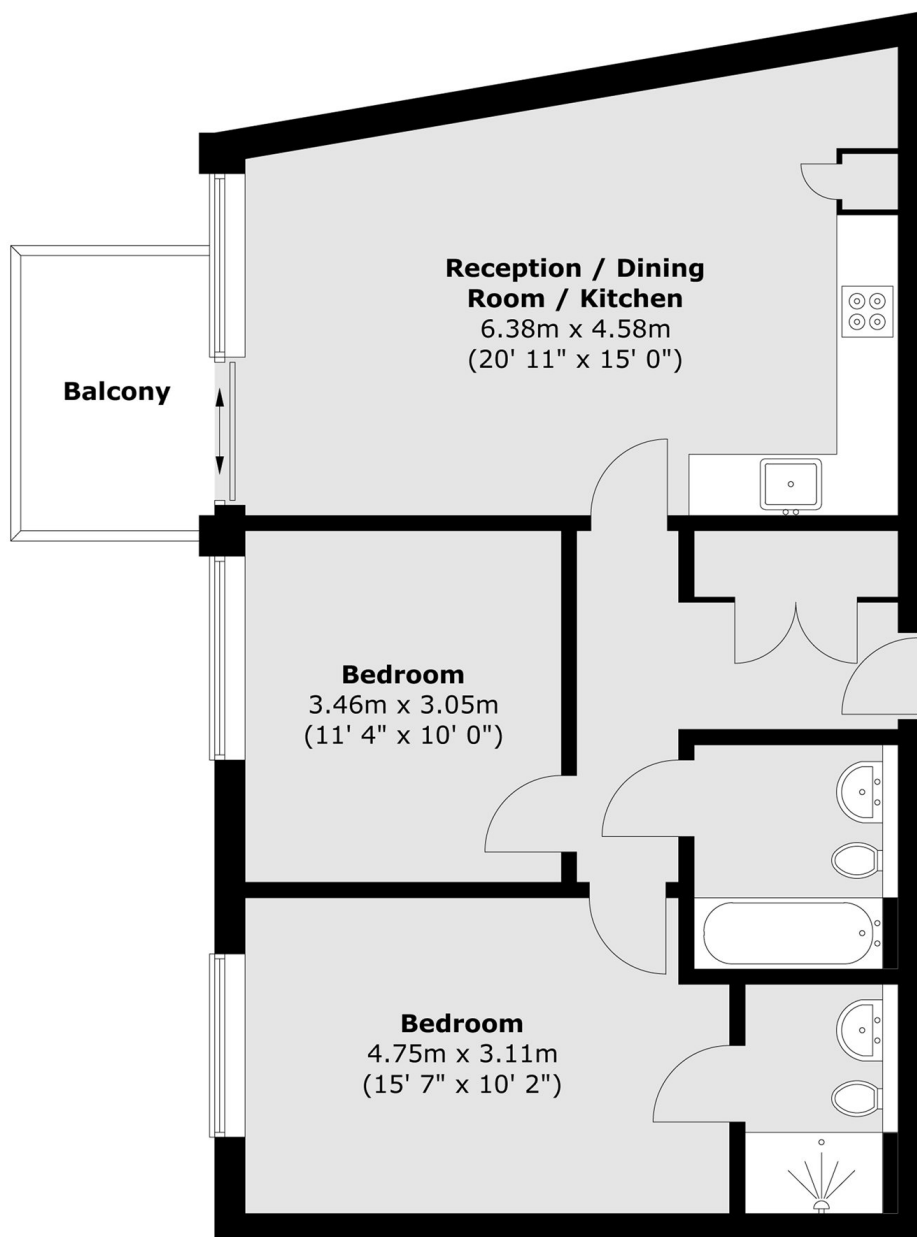
Further amenities include: concierge service, on-site gym, private roof terrace and communal gardens

Devons Road is located within access of the amenities of Bow, Stratford and Canary Wharf. Transport links include Devons Road DLR and Bromley by Bow Underground Station, providing connections via the DLR, District, Hammersmith & City and Circle lines.

Features

- Concierge
- Private Balcony
- Private Park Area
- Communal Garden
- Transport Links
- Residents Gym

Devons Road, London, E3



Total area (approx.) : 70.2 sq. m (756 sq. ft)
Total balcony area (approx.) : 5.1 sq. m (55 sq. ft)