



## Franklins Row, SW3

£1,250,000

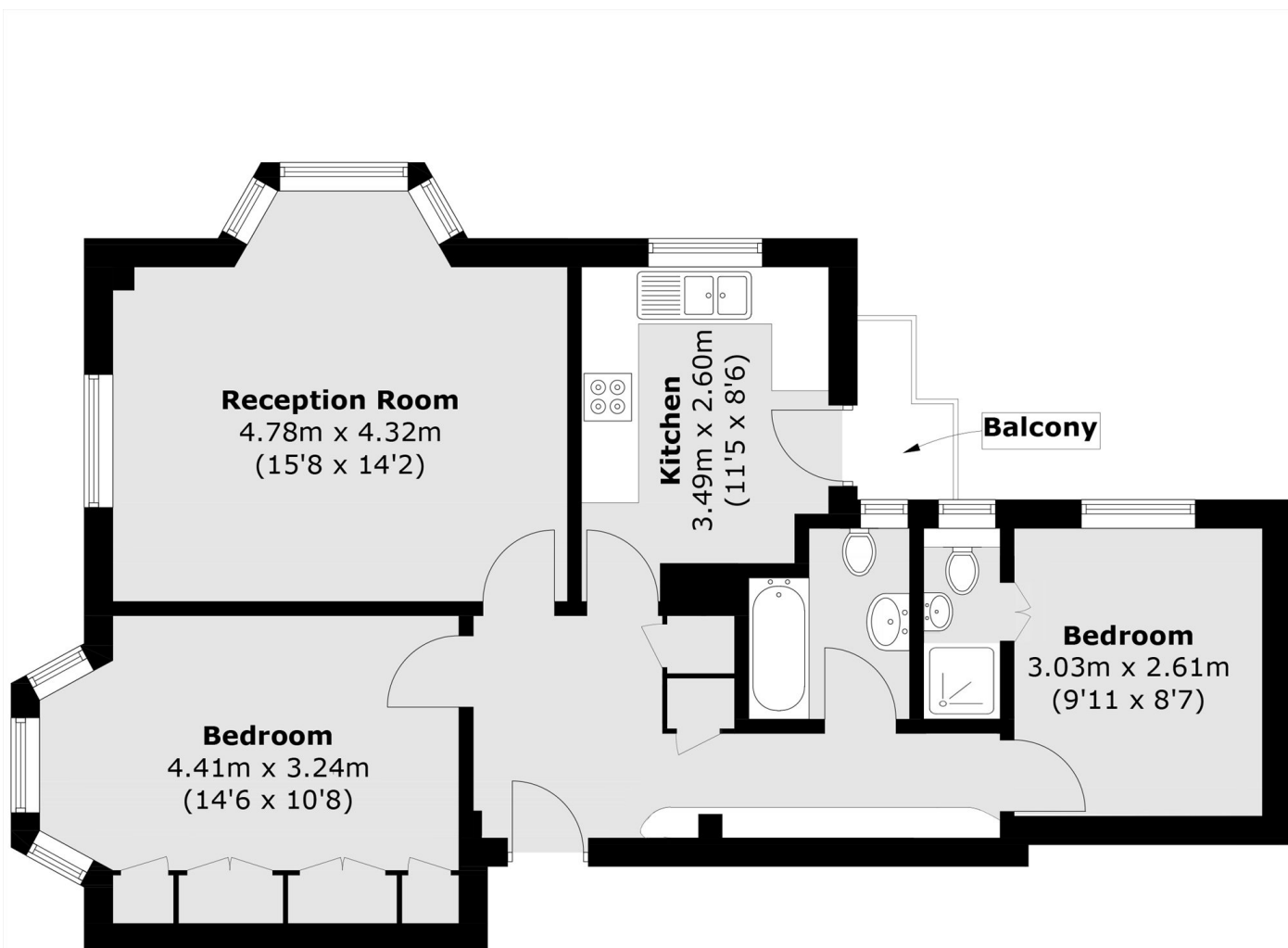
A wonderful two double bedroom apartment with unparalleled triple aspect views over Burton Court, St. Leonard's Terrace and the Saatchi Gallery. This property benefits from a balcony, two double bedrooms and two bathrooms as well as a share of the freehold and portorage, making it a fantastic London base.

Burton Court is an Art-Deco purpose built block with a resident porter. Residents can also have access to Burton Court's gardens with tennis courts and a dog walking area subject to availability. The Kings Road and Sloane Square Station are both a short walk away.

### Features

- Share of Freehold
- Good Condition
- Two Double Bedrooms
- Porter
- Popular Location
- Art-Deco Building

# Franklins Row, London, SW3



## Second Floor

Total area (approx.): 65.8 sq. m (708 sq. ft)  
(Excluding Void)  
Balcony area (approx.): 1.5 sq. m (16.1 sq. ft)