



12 Fairway

Kingsthorpe, Northampton, NN2 7JZ

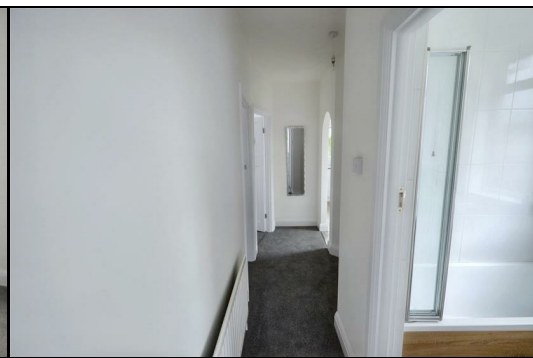
£1,125 PCM



IF YOU WOULD LIKE TO VIEW THIS PROPERTY PLEASE CLICK THE BUTTON WITH THE EMAIL LOGO AND WE WILL BE IN TOUCH.

Available to move into Now.

A recently refurbished semi-detached two bedroom bungalow in the popular region of Kingsthorpe, with low maintenance gardens and off-road parking, accessed via the service road to the rear.



Unfurnished accommodation: Entrance hall, living room, kitchen, bathroom, two double bedrooms, gardens to the front, side and rear, off-road parking. Energy Rating D. Council Tax Band B.

Access to this bungalow is via a UPVC door opening into the entrance hall, which provides access to all rooms. The kitchen, which was fully refitted in 2021, comes with a range of base and eye level white high gloss cabinets. An electric oven and induction hob are provided. A UPVC door leads to the gardens. The light and airy living room is carpeted with a bay window overlooking the rear of the property.

The recently fitted bathroom comprises a low-level toilet, a hand wash basin, a bath with a chrome power shower over, and an additional handheld shower hose. The master bedroom is carpeted with a window overlooking the front of the property. Bedroom two, also a double and also carpeted, has a window overlooking the front of the property.

Externally, a hedged boundary provides privacy from Fairway with a wrought iron gate and a footpath leading you to the entrance door and side gate. The front, rear and side gardens are paved and gravelled for low maintenance, with a timber shed, and a gate leading to the parking space which is accessed by the rear service road.

The property benefits UPVC double glazing and gas fired radiator central heating.

Kitchen 12' x 7' (3.66m x 2.13m)

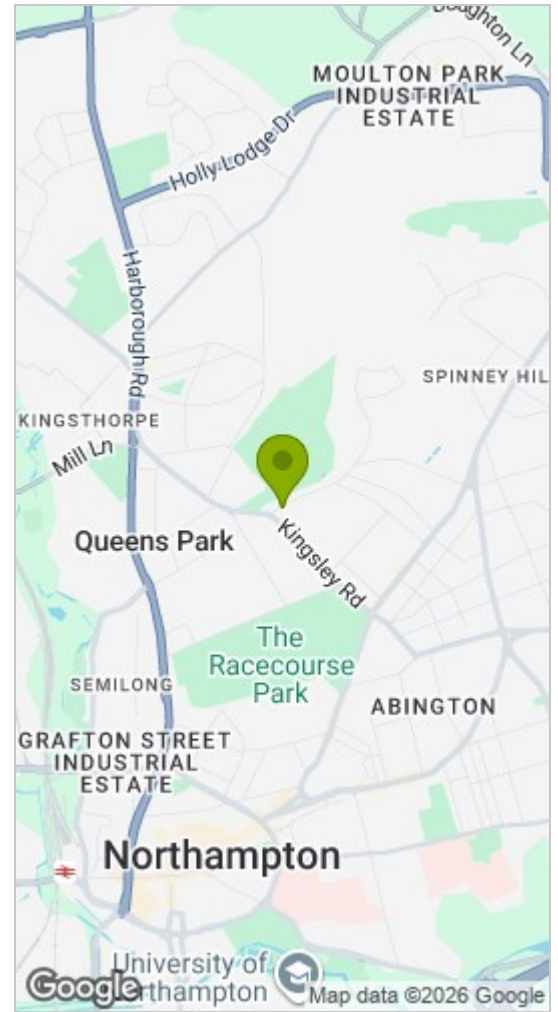
Living Room 13' x 10' (3.96m x 3.05m)

Bathroom 6' x 5' (1.83m x 1.52m)

Master Bedroom 13' x 9' (3.96m x 2.74m)

Bedroom Two 8' x 8' (2.44m x 2.44m)

Area Map



Energy Efficiency Rating

Energy Efficiency Rating		
	Current	Potential
<i>Very energy efficient - lower running costs</i>		
(92 plus) A		
(81-91) B		86
(69-80) C		
(55-68) D	60	
(39-54) E		
(21-38) F		
(1-20) G		
<i>Not energy efficient - higher running costs</i>		
England & Wales	EU Directive 2002/91/EC	

These particulars, whilst believed to be accurate are set out as a general outline only for guidance and do not constitute any part of an offer or contract. Intending purchasers should not rely on them as statements of representation of fact, but must satisfy themselves by inspection or otherwise as to their accuracy. No person in this firm's employment has the authority to make or give any representation or warranty in respect of the property.

9 Westleigh Office Park, Moulton Park, Northampton, Northamptonshire, NN3 6BW

Tel: 01604 250066 Email: rentals@greenerrentals.com <https://www.richardgreener.co.uk>