



Queenshurst Square, KT2

£650,000

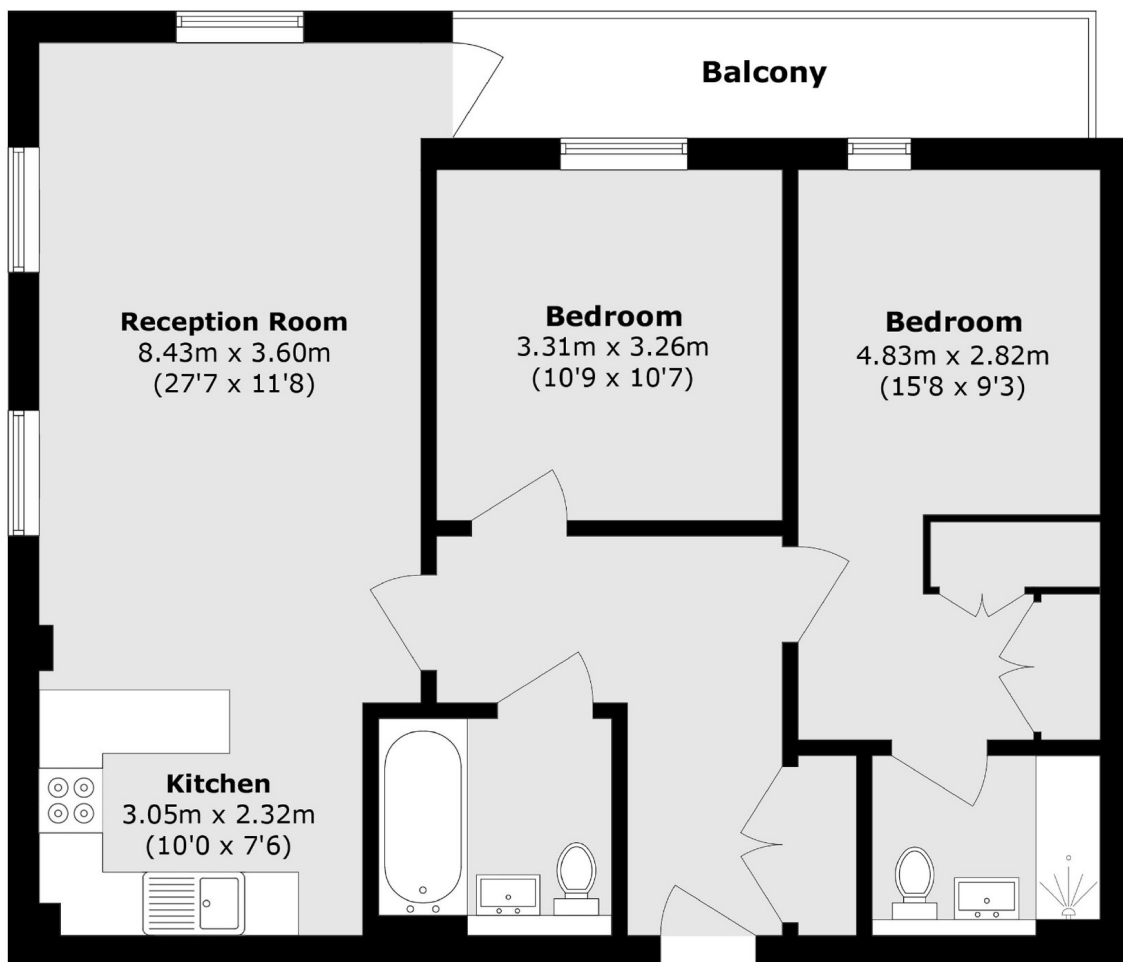
Hamond Court has quickly established itself as one of Kingston's most attractive developments due to the striking architecture, superb facilities and exceptional quality throughout. This bright and spacious, two double bedroom, two bathroom apartment is well located in the development and has a large private terrace with stunning views across Kingston. It also has private allocated underground parking.

Hamond Court is perfectly located for Kingston town centre and Railway Station, with a range of local shops and the River Thames just moments away.

Features

- Two Bedrooms
- Two Bathrooms
- Private Balcony
- Chain Free
- Concierge
- Gym

Queenshurst Square, Kingston Upon Thames, KT2



Total area (approx.): 76.7 sq. m (825.6 sq. ft)

Balcony area (approx.): 6.8 sq. m (73.2 sq. ft)