



Ilfracombe Gardens, Romford - RM6

£1,300 pcm Freehold



**HIGHCASTLE
ESTATES**

020 3026 4420
lettings@hceuk.com

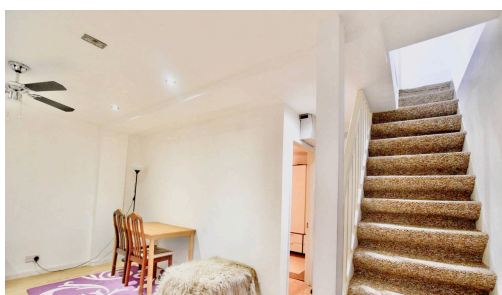
Well-located 1-bed basement flat on Ilfracombe Gardens, Goodmayes.
Walking distance to Goodmayes & Seven Kings stations plus nearby
supermarkets and local amenities. Ideal for commuters.

Council Tax band: D

Tenure: Freehold

EPC Energy Efficiency Rating: D

EPC Environmental Impact Rating: D





You can include any text here. The text can be modified upon generating your brochure.