



Living  
made  
better

Defoe House  
London City Island, E14 0TW



£3,150 PCM

# Defoe House, London City Island, E14 0TW

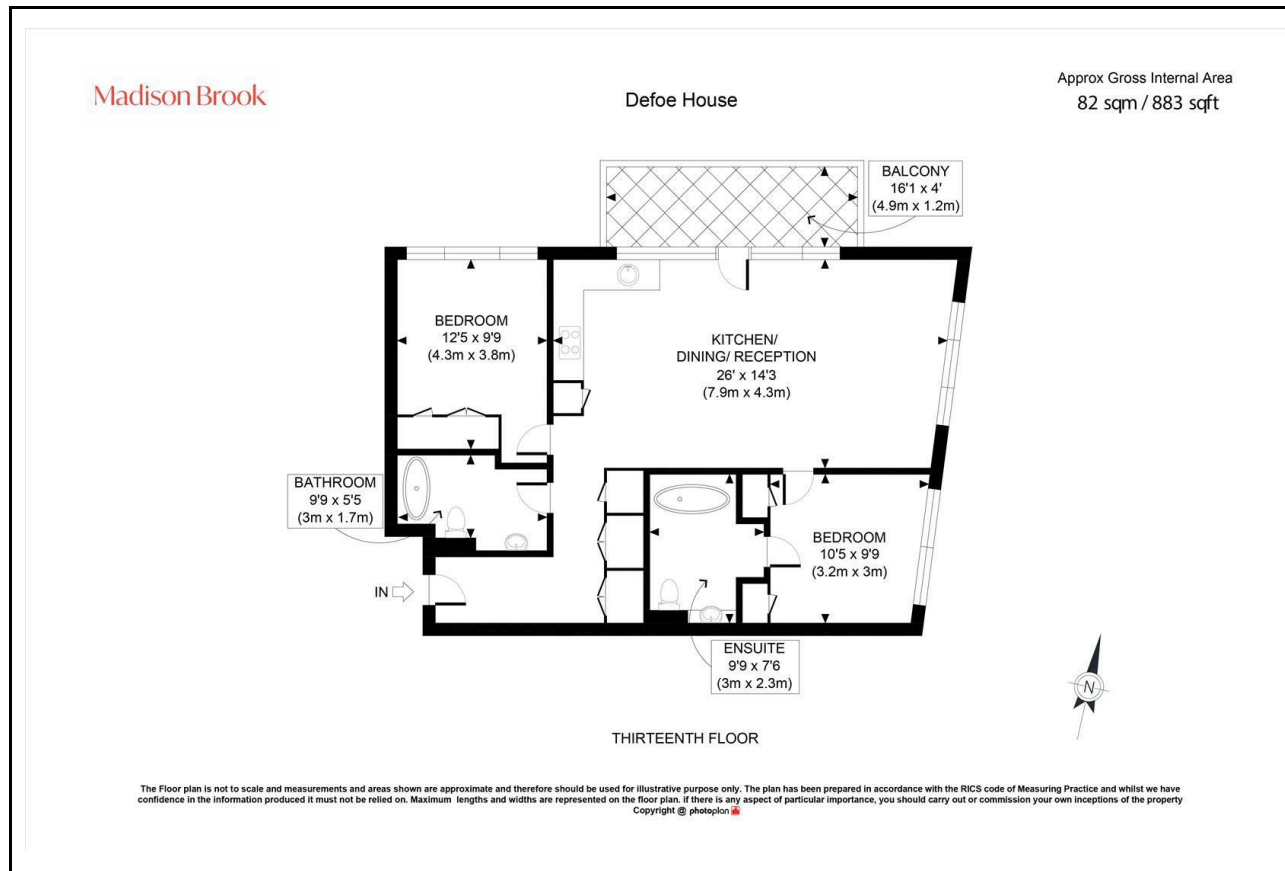
Madison Brook

## Property Summary

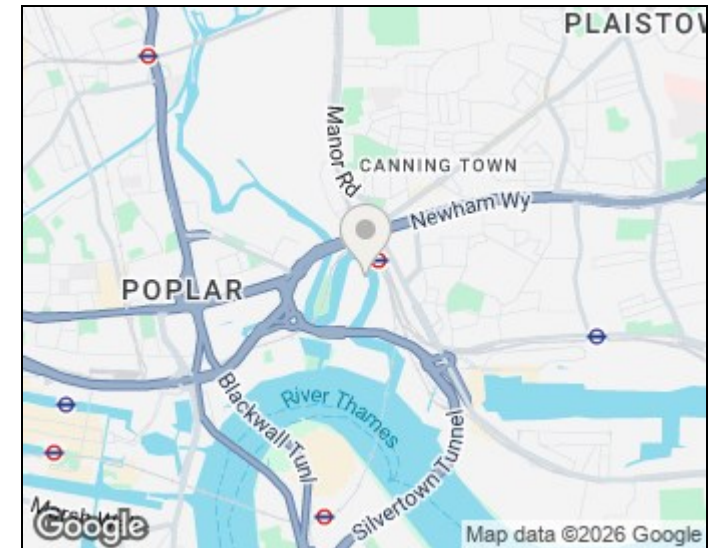
A superb two-bedroom, two-bathroom apartment set on the 13th floor of Defoe House. Offered to the rental market for the first time, this spacious and well-appointed property features a bright open-plan living area with private balcony, stylish kitchen with integrated appliances, and two generous bedrooms, one with an en-suite.

Residents enjoy 24-hour concierge service, a cinema room, a sky lounge, and access to both indoor and outdoor swimming pools. Located moments from Canning Town Underground Station.

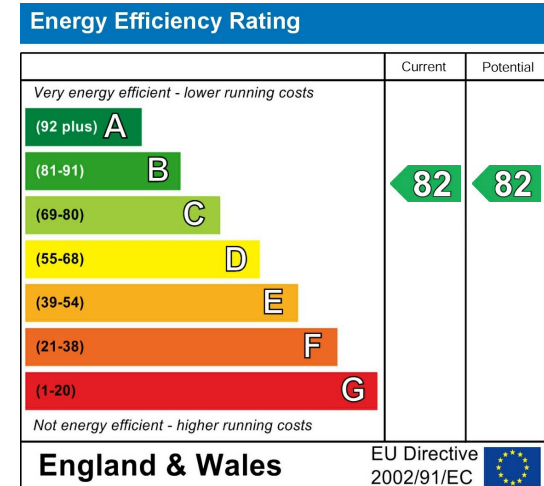
## Floorplan



## Area Map



## Energy Efficiency Graph



These particulars, whilst believed to be accurate are set out as a general outline only for guidance and do not constitute any part of an offer or contract. Intending purchasers should not rely on them as statements of representation of fact, but must satisfy themselves by inspection or otherwise as to their accuracy. No person in this firm's employment has the authority to make or give any representation or warranty in respect of the property.

Unit B 20 Western Gateway, Royal Victoria  
Dock, London, E16 1BS  
Tel: 020 3946 6000 Email:  
docklands@madisonbrook.com  
<https://madisonbrook.com/>