



## EVELYN STREET, SE8

£300,000

Modern apartment

Chain free

Close to stations

Balcony

Open plan

Energy rating: b

@marshandparsons  
marshandparsons.co.uk

MARSH &  
PARSONS



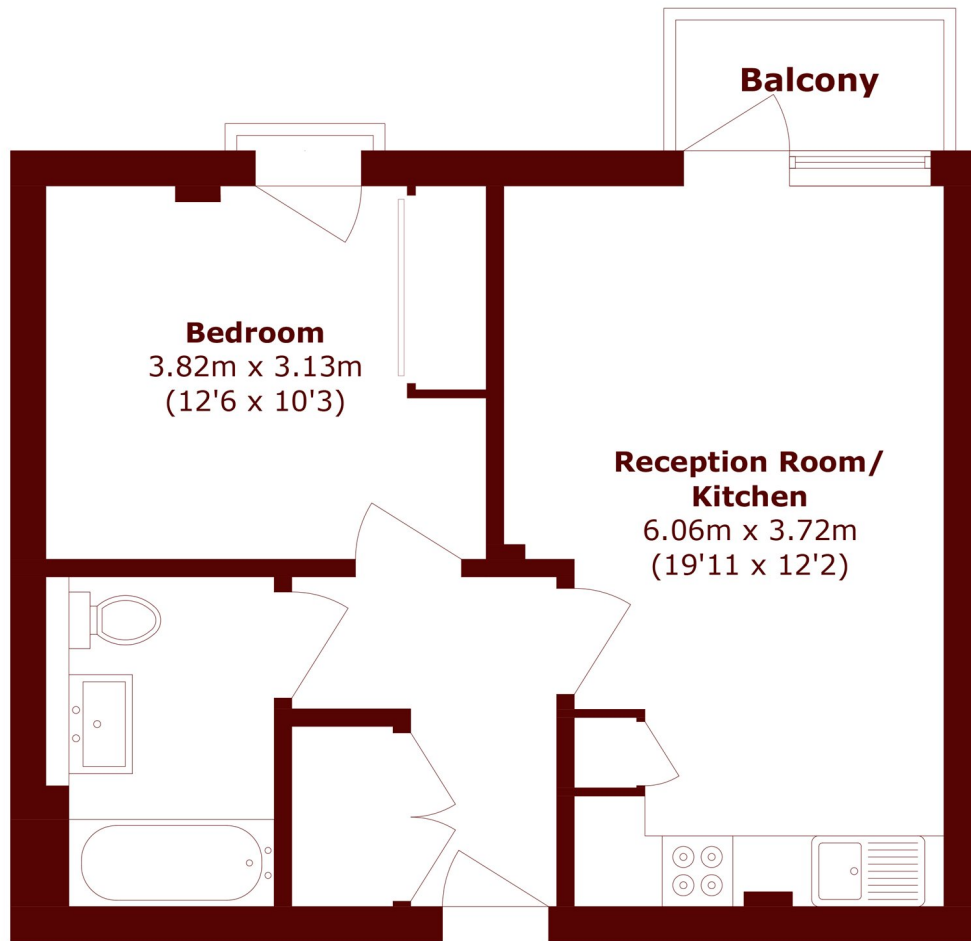
# ABOUT THE PROPERTY

Positioned in the heart of vibrant Deptford is this one bedroom apartment for sale in the sought after Drakes Building. Perfectly suited for first time buyers or investors, it offers modern living with open plan kitchen. A well appointed bathroom suite is located off the double bedroom with tall windows throughout allowing an abundance of light into the property.

Ideally located, this property allows for easy access to central london via Deptford station, as well as having multiple bus routes situated right outside the building. Other benefits include secure entry as well as being walking distance to the character of Deptford High Street and the marketplace within it.



# STEP INSIDE EVELYN STREET



Total area (approx.): 46.6 sq. m (501.6 sq. ft)

Balcony area (approx.): 2.5 sq. m (26.9 sq. ft)

Greenwich  
020 8312 8312

Energy Rating: B We aim to make our particulars both accurate and reliable. However, they are not guaranteed; nor do they form part of an offer or contract. If you require clarification on any points then please contact us, especially if you're traveling some distance to view. Please note that appliances and heating systems have not been tested and therefore no warranties can be given as to their good working order

MARSH &  
PARSONS