



## Ashburnham Place, SE10

£375,000

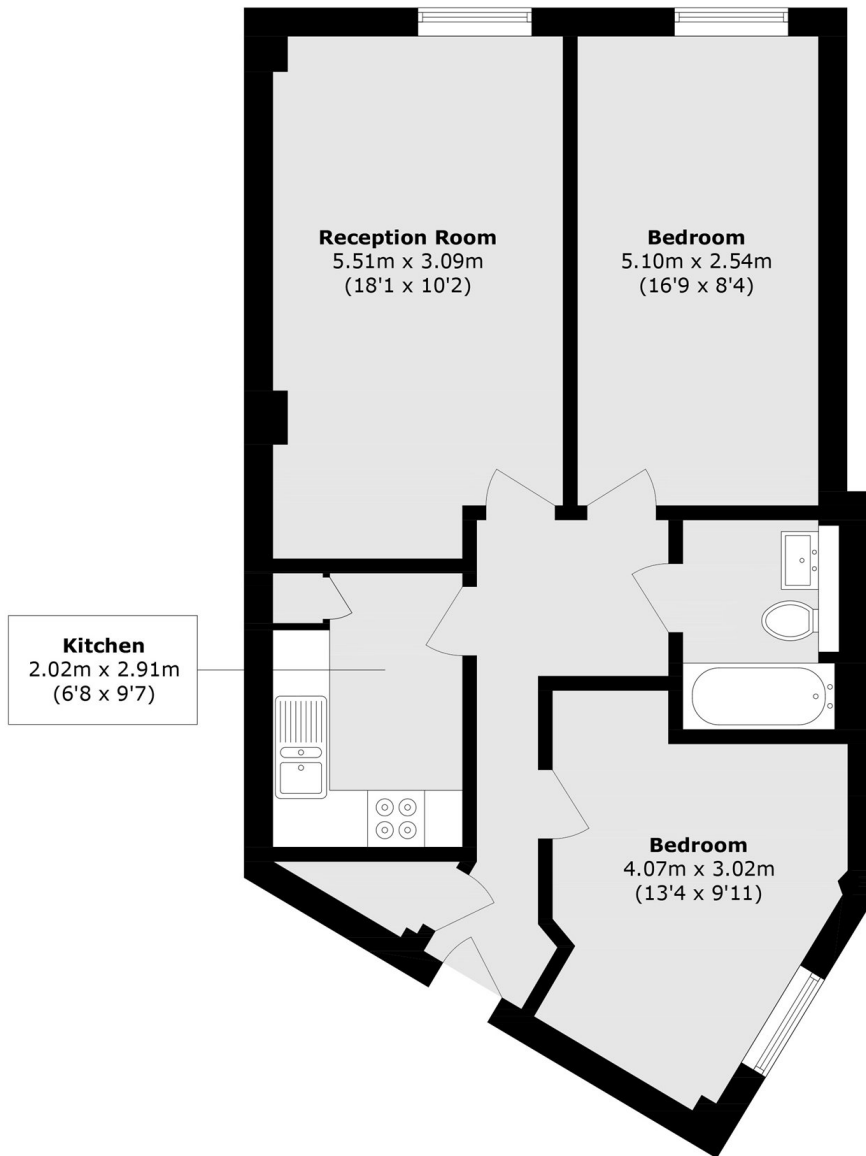
A well presented two bedroom modern apartment situated on the second floor of this modern development, the bathroom has recently been renovated and further benefits from being in a sought after location and is offered to the market chain free. It would make an ideal first purchase or buy to let investment. A viewing is highly recommended.

Ashburnham Place is widely considered one of the best roads in West Greenwich and forms part of the hugely desirable Ashburnham Triangle situated moments from Greenwich Mainline and DLR station.

### Features

Modern Flat  
Sought After Location  
Two Bedroom  
Ideal First Purchase  
Moments From The DLR  
Ashburnham Triangle

# Ashburnham Place, London, SE10



Total area (approx.): 59.6 sq. m (641.5 sq. ft)