



Brent
Cross
Town

THE DELAMARRE

LONDON NW2





A NEW WAY TO LIVE



Watch our BXT
film here

Welcome to The Delamarre at Brent Cross Town. A home surrounded by over 50 acres of landscaped parks and playing fields, and a short walk from a buzzing destination high street, alive with shops, bars and restaurants - where everything you need is within a fifteen-minute walk or cycle ride away - all just a 12 minute train journey from central London.

A new park town for future London, Brent Cross Town is part of a wider masterplan that sets a new standard for large-scale urban regeneration whilst making a positive contribution to the world we share.

Offering a new way of living that inspires healthy, sustainable lifestyles tailored to residents' needs, it's a place where everyone who calls it home will play their part in defining a bold vision for the future. A net zero carbon town by 2030, Brent Cross Town is built on a simple wish that we all share: to do our very best to enjoy every moment of our lives.



Elegant **MANSION STYLE APARTMENTS** overlooking **CLAREMONT PARK** blend city living with a host of green, open spaces to enjoy.



26



38

CONTENTS

1

BRENT CROSS TOWN

A new park town for future London.
06 – 13

2

CONNECTIVITY

Great transport links into and out of central London.
14 – 17

3

THE DELAMARRE

Designed by award-winning architects Maccreanor Lavington, with interiors by Woods Bagot inspired by the Art Deco movement.
18 – 21

4

THE CLAREMONT PARK CLUB

Discover the space to enjoy an inspiring lifestyle without ever leaving home.
22 – 37

5

PARKSIDE LIVING

Elegant and expansive mansion style apartments with park and garden views, light-filled interiors, natural finishes and bold colours.
38 – 53

6

APARTMENT FINDER

54 – 55

7

FLOOR PLATES

56 – 81

8

SPECIFICATION

82 – 83

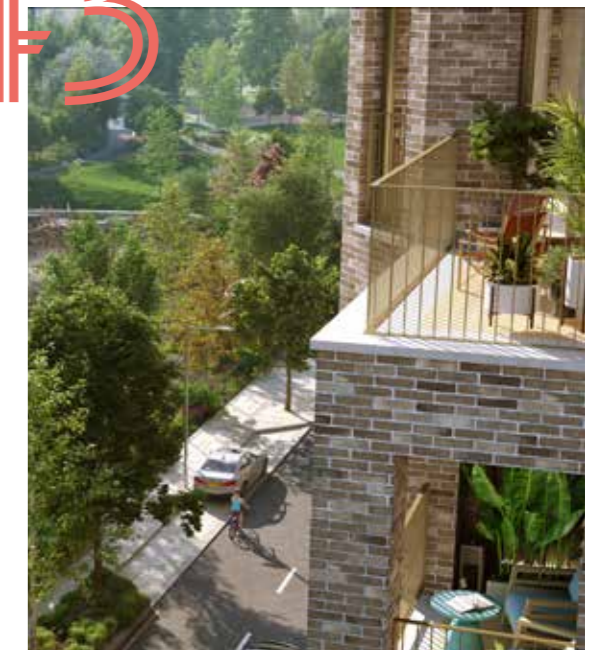
9

VISIT/CONTACT

Come down to the Visitor Pavilion to meet the team and find out more.
84

BRENT CROSS TOWN will set a new benchmark for **QUALITY of PLACE** and **NEW HOMES** in London.

43



Brent Cross West Station
Thameslink
(Completion expected Autumn 2023)

M1 Motorway

North Circular A406 Road

Central Neighbourhood Square

Brent Cross Shopping Centre

THE DELAMARRE

Brent Cross Tube Station
Northern line
(10 mins walk)

Office District

Claremont Park

The High Street

The Ashbee

Brent Cross Town Visitor Pavilion

Clitterhouse Playing Fields



Welcome to **BRENT CROSS TOWN**, a place that **INSPIRES** us into **FUTURE WAYS** of **LIVING** and **WORKING**. Related Argent, in partnership with Barnet Council, is on-site delivering a new North London neighbourhood spanning **180 ACRES**, with **50 acres** of green parks and playing fields.



SPORT & PLAY

We will create **THE PLACE** in LONDON to participate in **SPORT** and **PLAY** with **50 ACRES** of **PARKS** and **PLAYING FIELDS** to **UNITE** people and **TRANSFORM** lives



FLOURISHING COMMUNITY

We will make a North London Town **WHERE ALL CAN FLOURISH**

We're making **FOUR PLEDGES** to deliver on

Our vision

for this **NORTH LONDON NEIGHBOURHOOD**



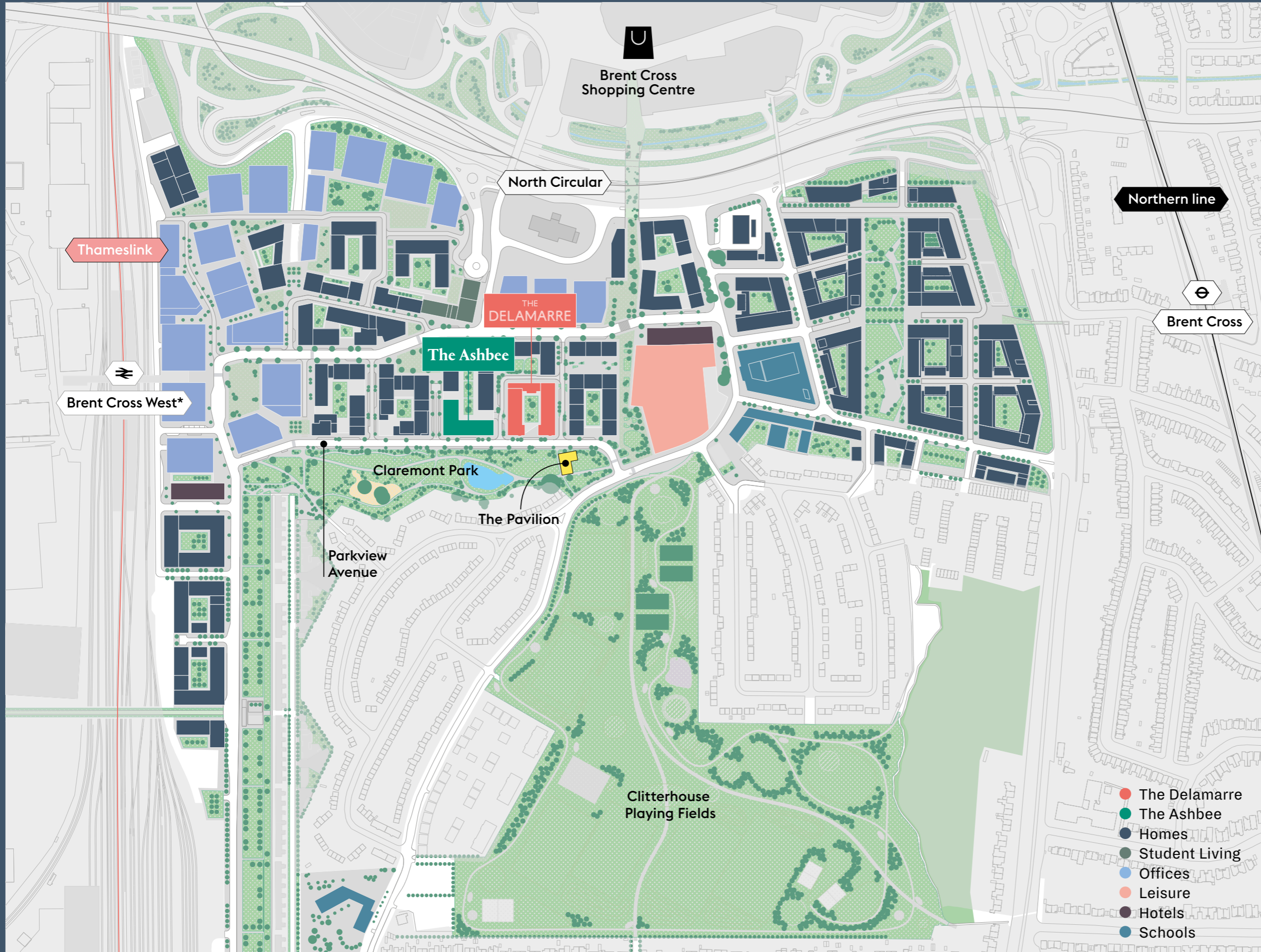
NET ZERO CARBON TOWN

We will build a **NET ZERO CARBON** town — addressing the **GLOBAL CHALLENGE** of the climate crisis



STRENGTHENING CONNECTIONS

We will strengthen **CONNECTIONS** with **GREAT TRANSPORT** into and out of **CENTRAL LONDON**, connecting businesses, customers, friends and family



A PLAN FOR THE FUTURE

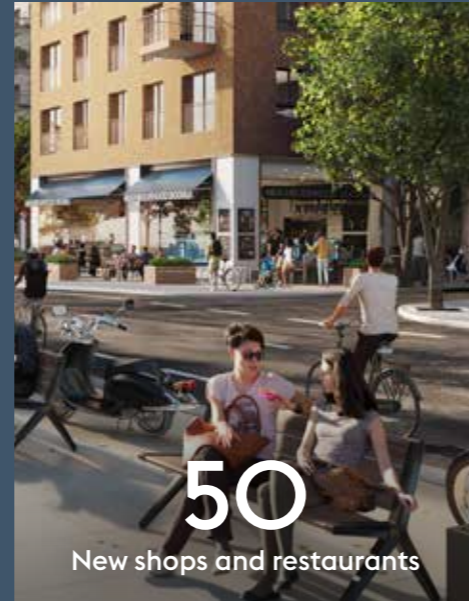
Brent Cross Town will be a new **PARK TOWN FOR FUTURE LONDON**. It will establish **A NEW STANDARD FOR LARGE-SCALE URBAN REGENERATION** whilst making a positive contribution to the world we share.



180
Acres



6,700
New homes



50
New shops and restaurants



25,000
People working here

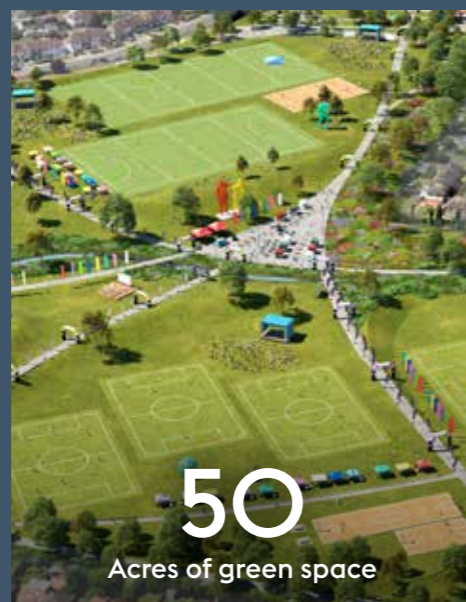
People enjoy a better
QUALITY OF LIFE
and greater sense of
COMMUNITY when
everything they need
is within a **FIFTEEN-**
MINUTE walk or cycle.



£8bn
GDV



8
New public squares



50
Acres of green space



ZERO
Net zero carbon town by 2030

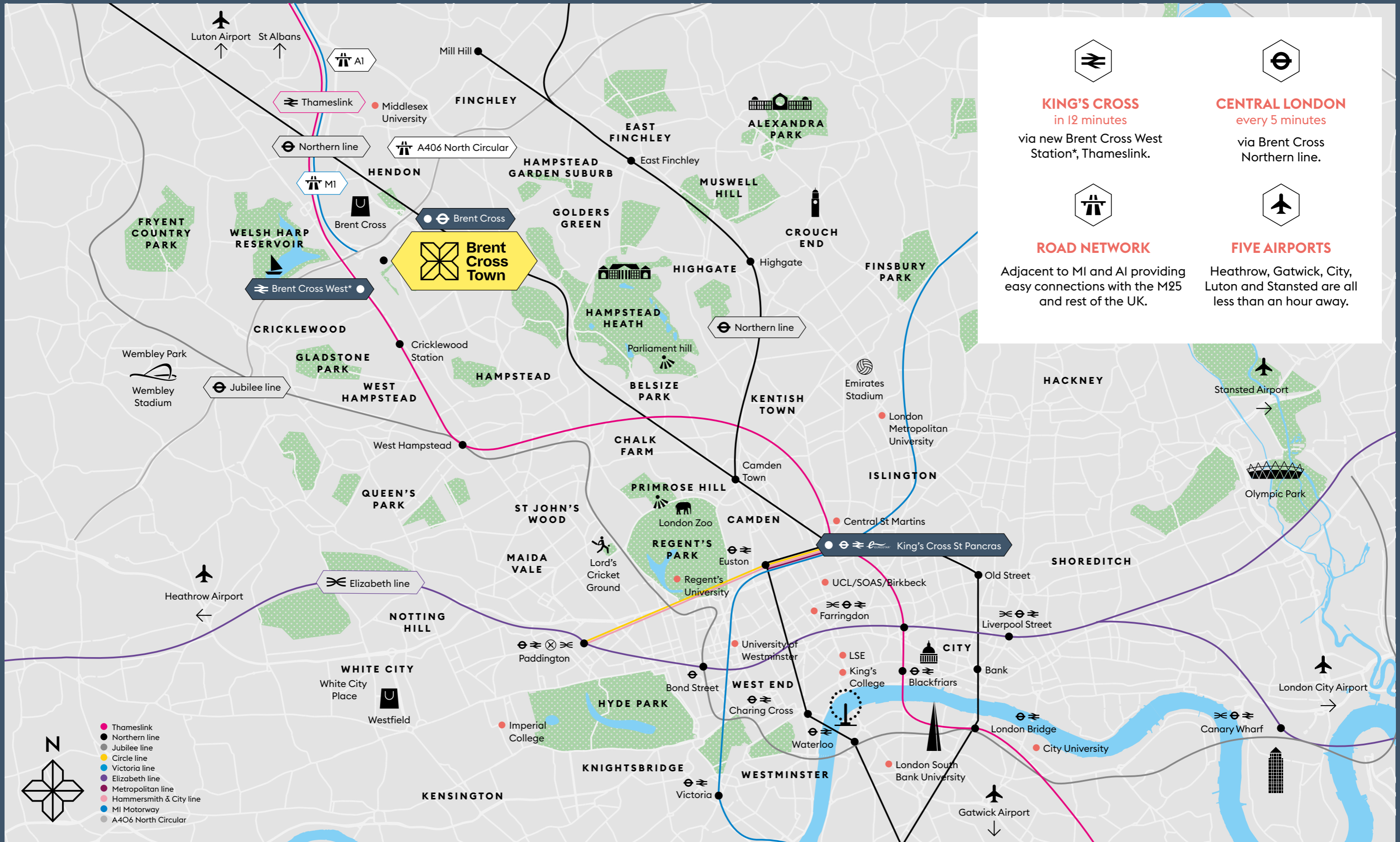






A new HIGH STREET
combining popular
national brands
with independent
SHOPS, CAFÉS and
RESTAURANTS.

Our exemplar neighbourhood town will provide residents and workers with easy access to home, work, childcare, health practices, shops, restaurants, schools and parks.

The High Street and Central Neighbourhood Square will be the destination for residents, workers and visitors to shop, eat and socialise, providing a variety of everyday essentials, popular brands, independent and artisan shops selling homemade and home-grown produce.





 KING'S CROSS in 12 minutes via new Brent Cross West Station*, Thameslink.	 CENTRAL LONDON every 5 minutes via Brent Cross Northern line.
 ROAD NETWORK Adjacent to M1 and A1 providing easy connections with the M25 and rest of the UK.	 FIVE AIRPORTS Heathrow, Gatwick, City, Luton and Standed are all less than an hour away.



NORTH LONDON NEIGHBOURHOOD

Step out into the **PARK** - a space to explore, meet friends, exercise or **SIMPLY ENJOY** a relaxing stroll.



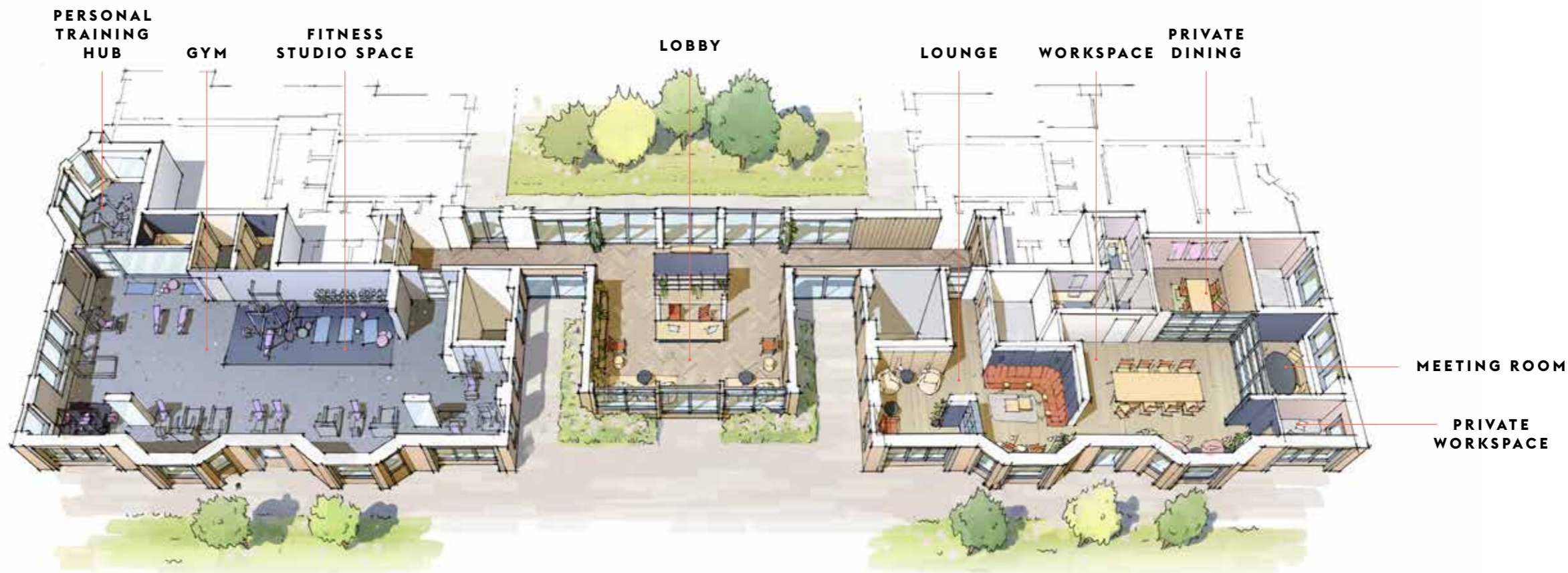
Image looking down Claremont Park from The Pavilion.

ELEGANT and **EXPANSIVE** mansion style apartments with **PARK** and **GARDEN** views, light-filled interiors, **NATURAL** finishes and bold colours.



Image looking down Claremont Park Avenue with The Delamarre to the right.

The Delamarre



The Ashbee



THE CLAREMONT PARK CLUB

EVERY RESIDENT will enjoy being part of the **CLAREMONT PARK CLUB**, located on the ground floor of both The Ashbee and The Delamarre. Discover the space to enjoy an **INSPIRING LIFESTYLE** without ever leaving home.

The Lobby offers the **BRIGHTEST OF WELCOMES**. With floor-to-ceiling glazing affording **EXPANSIVE VIEWS** across the landscaped **PODIUM GARDEN** and **CLAREMONT PARK**, with service at its best.



The **SUNLIT PARKSIDE LOUNGE** is a place that welcomes the **OUTSIDE IN**. Through the application of rich natural tones, and the **FLOWING LINES** of its furnishings.



WORKING and dining at home has never been more **STYLISH**, in the **ADJOINING** space with its **REFECTORY** style seating and adjacent **PRIVATE DINING ROOM** and **KITCHEN**.



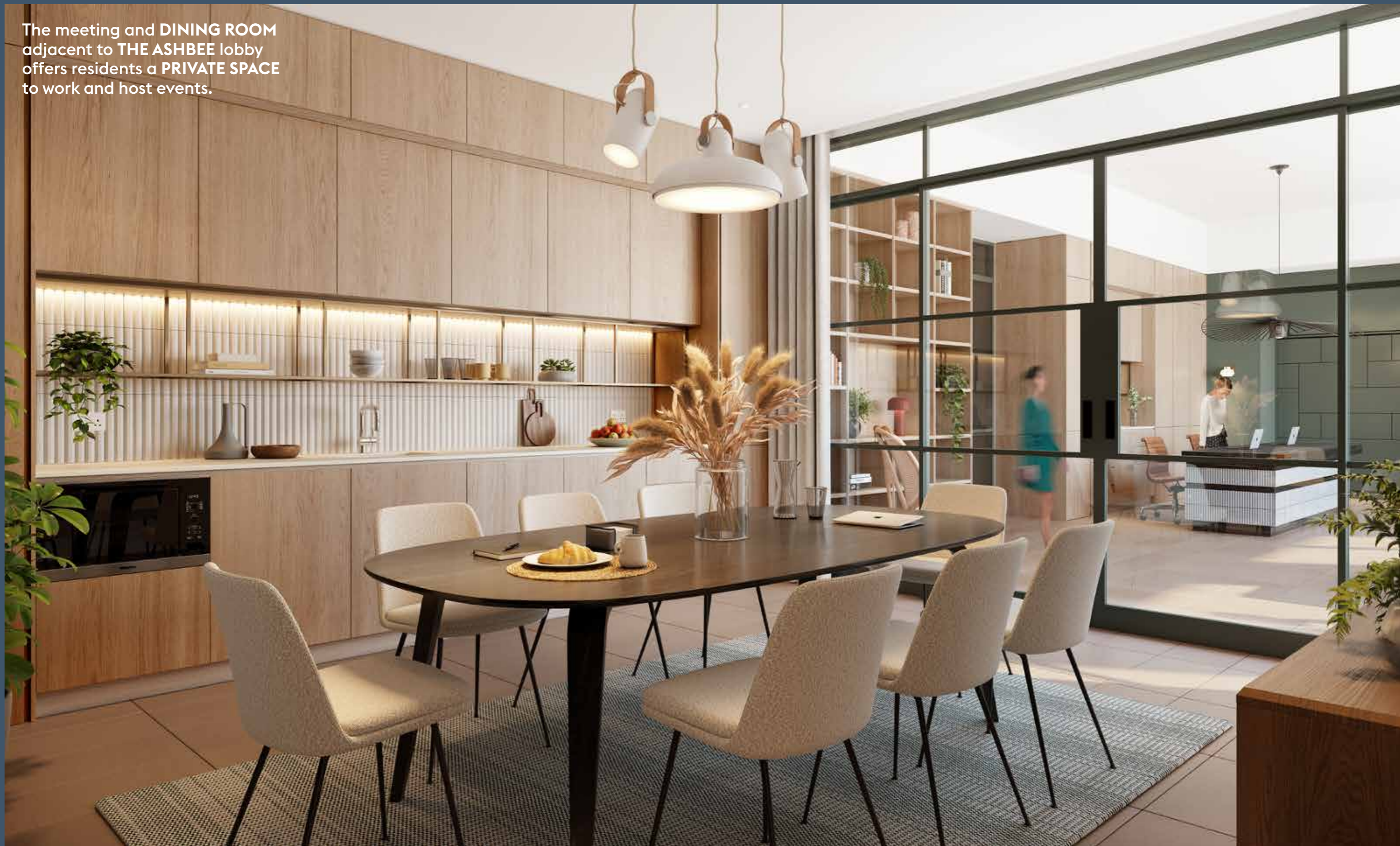


RAISE YOUR PULSE whilst enjoying the view in the 1,790 SQ FT parkside gym, that defines the very latest in personal fitness.



A PRIVATE MEETING and SCREENING ROOM are both accessed via a second stylish PARKSIDE LOBBY at the adjacent building, The Ashbee.

The meeting and DINING ROOM adjacent to THE ASHBEE lobby offers residents a PRIVATE SPACE to work and host events.





Host a **MOVIE NIGHT** or party for friends in the sumptuous private **SCREENING ROOM** and **BAR**.

PARKSIDE LIVING

Inspired by **VICTORIAN MANSION BLOCKS**, with beautiful bay windows, The Delamarre has been designed by **AWARD-WINNING** architects Maccreeanor Lavington.



The floor-to-ceiling windows bring so much **NATURAL LIGHT** in, whilst offering **IMPRESSIVE VIEWS** over the park, playing fields and far beyond.



Take time to **ENJOY THE VIEWS** across the playing fields or pause for a moment to absorb the **NATURAL BEAUTY** of the **LANDSCAPED GARDENS**.





Wrap around terraces on **LEVEL 7** with **PANORAMIC VIEWS** back to **CENTRAL LONDON**.

Stylish, **LIGHT-FILLED**, open plan **LIVING SPACES** feature finishes in rich contrasting textures and colours.



High-spec kitchens with integrated appliances and boiling water taps for everyday convenience.



SPACIOUS BATHROOMS
and **EN-SUITES** featuring
tiling and mirrored storage.





The private internal podium garden of The Delamarre with landscaping and views out through the lobby to Claremont Park.



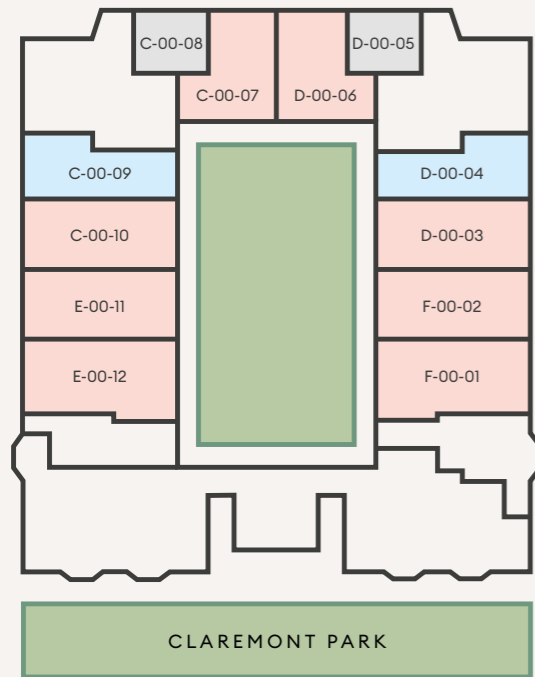
Relax in the intimate, **TRANQUIL LANDSCAPE** of the pocket park nestled behind The Delamarre, or take time out with friends or family, to explore the **VAST OPEN EXPANSE** of the adjacent playing fields.

APARTMENT FINDER

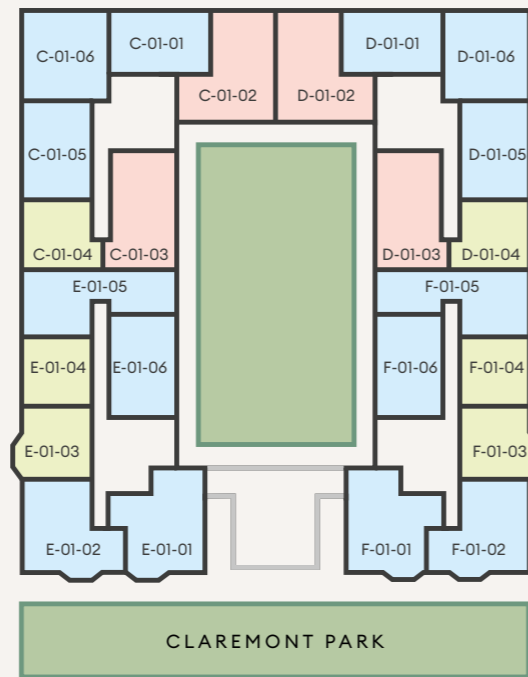
-  Studio
-  1 bed apartment
-  2 bed apartment
-  3 bed apartment



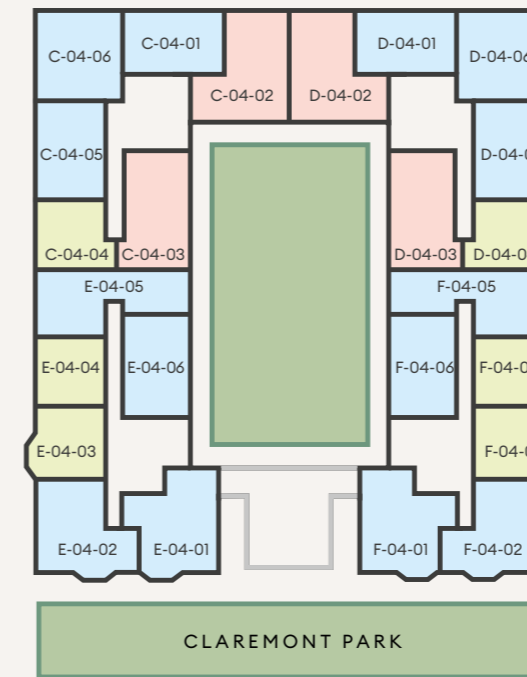
GROUND



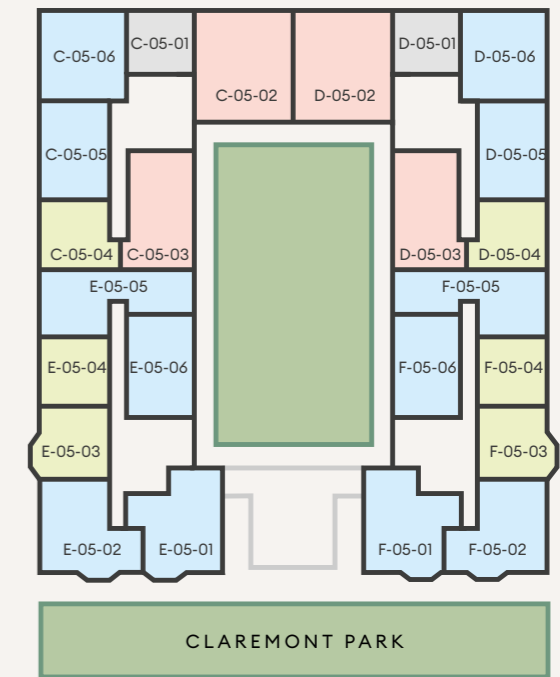
FIRST



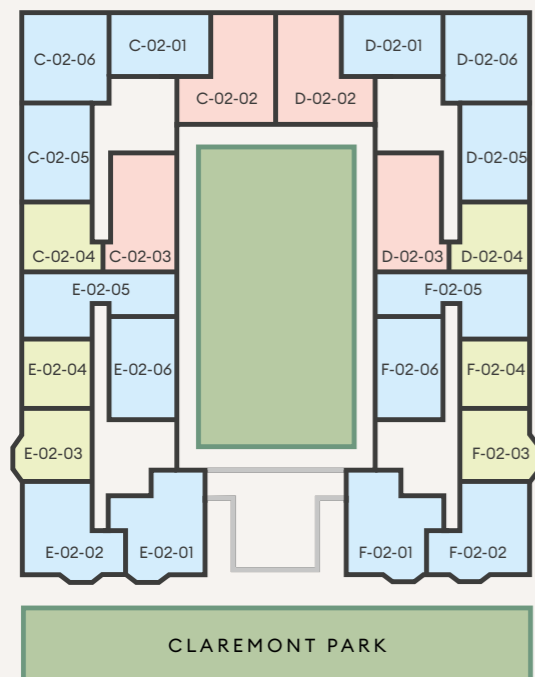
FOURTH



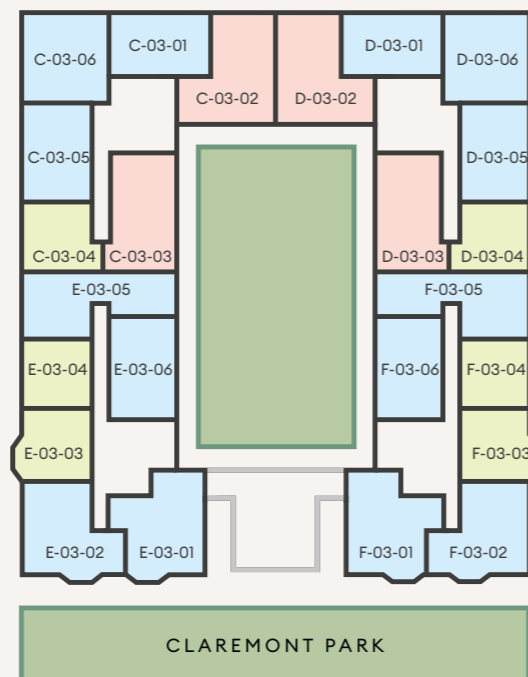
FIFTH



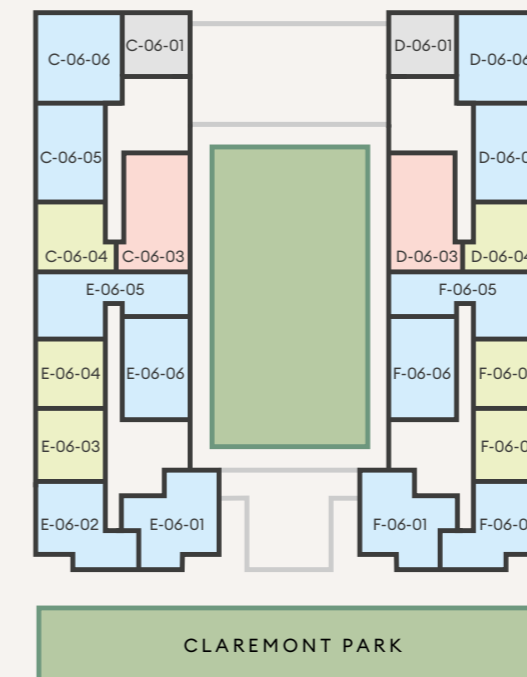
SECOND



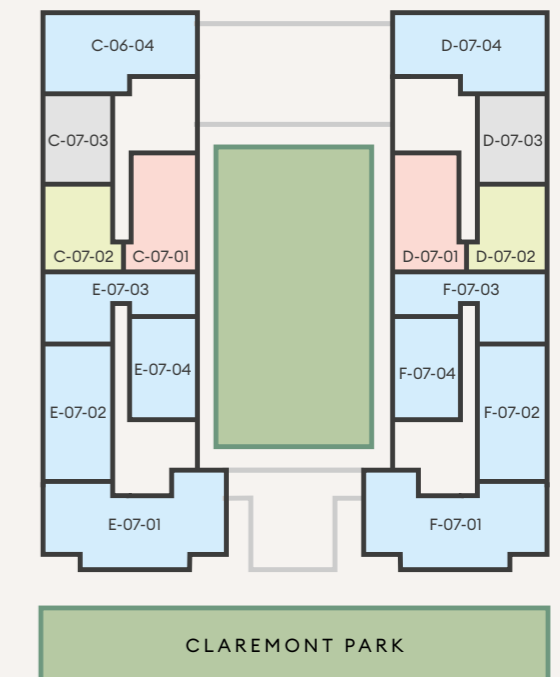
THIRD



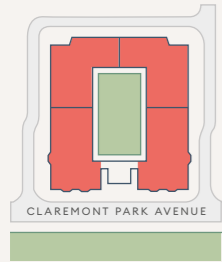
SIXTH



SEVENTH



7 FLOOR PLATES



East

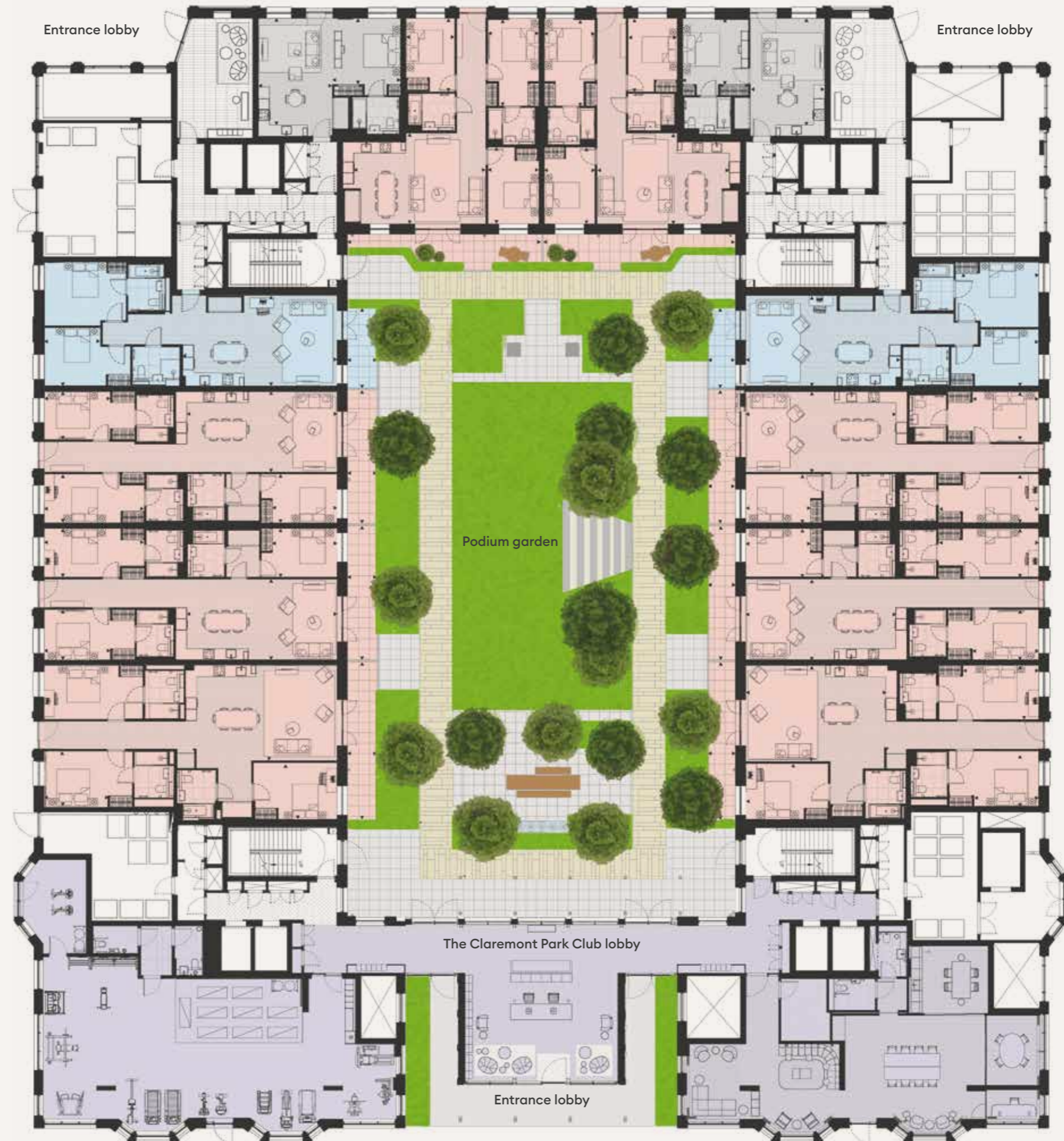


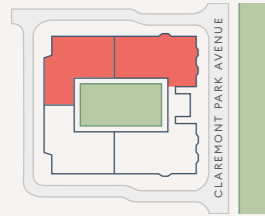
West



- Studio
- 2 bed apartment
- 3 bed apartment
- The Claremont Park Club

Floorplans and listed apartment areas are for approximate measurements only. Dimensions are not intended to be used for carpet sizes, appliance sizes or items of furniture. Furniture shown is not included.





- Studio
- 2 bed apartment
- 3 bed apartment
- The Claremont Park Club

Floorplans and listed apartment areas are for approximate measurements only. Dimensions are not intended to be used for carpet sizes, appliance sizes or items of furniture. Furniture shown is not included.



STUDIO		D-00-05	
NSA	49.5 m²	533 sq ft	
Living/Kitchen	5.79 x 3.43 m	19ft 0" x 11ft 3"	
Bedroom	3.43 x 3.64 m	11ft 3" x 11ft 11"	

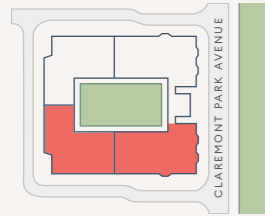
2 BEDROOM		D-00-04	
NSA	90.9 m²	978 sq ft	
Courtyard	7.0 m²	75 sq ft	
Living/Kitchen	4.90 x 8.37 m	16ft 1" x 27ft 6"	
Bedroom 1	3.95 x 4.70 m	13ft 0" x 15ft 5"	
Bedroom 2	2.64 x 2.72 m	8ft 8" x 8ft 11"	
Courtyard	4.33 x 1.48 m	14ft 2" x 4ft 10"	

3 BEDROOM		D-00-06	
NSA	97.3 m²	1,047 sq ft	
Courtyard	14.7 m²	158 sq ft	
Living/Kitchen	4.92 x 7.18 m	16ft 2" x 23ft 7"	
Bedroom 1	4.67 x 2.74 m	15ft 4" x 9ft 0"	
Bedroom 2	3.98 x 2.66 m	13ft 1" x 8ft 9"	
Bedroom 3	4.20 x 2.74 m	13ft 9" x 9ft 0"	
Courtyard	1.50 x 10.47 m	4ft 11" x 34ft 4"	

3 BEDROOM		D-00-03	
NSA	114.6 m²	1,234 sq ft	
Courtyard	12.0 m²	129 sq ft	
Living/Kitchen	4.35 x 8.15 m	14ft 3" x 26ft 9"	
Bedroom 1	2.61 x 3.60 m	8ft 7" x 11ft 10"	
Bedroom 2	2.64 x 3.51 m	8ft 8" x 11ft 6"	
Bedroom 3	2.64 x 5.43 m	8ft 8" x 17ft 10"	
Courtyard	7.30 x 1.52 m	23ft 11" x 5ft 0"	

3 BEDROOM		F-00-02	
NSA	114.6 m²	1,234 sq ft	
Courtyard	11.8 m²	127 sq ft	
Living/Kitchen	4.39 x 8.13 m	14ft 5" x 26ft 8"	
Bedroom 1	2.72 x 3.61 m	8ft 11" x 11ft 10"	
Bedroom 2	2.62 x 3.49 m	8ft 7" x 11ft 5"	
Bedroom 3	2.64 x 5.44 m	8ft 8" x 17ft 10"	
Courtyard	7.30 x 1.48 m	23ft 11" x 4ft 10"	

3 BEDROOM		F-00-01	
NSA	129.0 m²	1,389 sq ft	
Courtyard	13.7 m²	147 sq ft	
Living/Kitchen	5.46 x 7.63 m	17ft 11" x 25ft 0"	
Bedroom 1	2.89 x 3.52 m	9ft 6" x 11ft 7"	
Bedroom 2	2.78 x 4.42 m	9ft 1" x 14ft 6"	
Bedroom 3	2.79 x 4.11 m	9ft 2" x 13ft 6"	
Courtyard	8.56 x 1.48 m	28ft 1" x 4ft 10"	



- Studio
- 2 bed apartment
- 3 bed apartment
- The Claremont Park Club

Floorplans and listed apartment areas are for approximate measurements only. Dimensions are not intended to be used for carpet sizes, appliance sizes or items of furniture. Furniture shown is not included.



STUDIO		C-00-08	
NSA	49.5 m²	533 sq ft	
Living/Kitchen	5.79 x 3.43 m	19ft 0" x 11ft 3"	
Bedroom	3.43 x 3.64 m	11ft 3" x 11ft 11"	

2 BEDROOM		C-00-09	
NSA	90.9 m²	978 sq ft	
Courtyard	7.0 m²	75 sq ft	
Living/Kitchen	4.90 x 8.37 m	16ft 1" x 27ft 6"	
Bedroom 1	3.95 x 4.70 m	13ft 0" x 15ft 5"	
Bedroom 2	2.64 x 2.72 m	8ft 8" x 8ft 11"	
Courtyard	4.33 x 1.48 m	14ft 2" x 4ft 10"	

3 BEDROOM		C-00-07	
NSA	97.3 m²	1,047 sq ft	
Courtyard	14.7 m²	158 sq ft	
Living/Kitchen	4.92 x 7.18 m	16ft 2" x 23ft 7"	
Bedroom 1	4.67 x 2.74 m	15ft 4" x 9ft 0"	
Bedroom 2	3.98 x 2.66 m	13ft 1" x 8ft 9"	
Bedroom 3	4.20 x 2.74 m	13ft 9" x 9ft 0"	
Courtyard	1.50 x 10.47 m	4ft 11" x 34ft 4"	

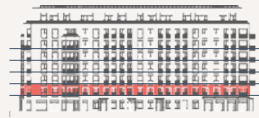
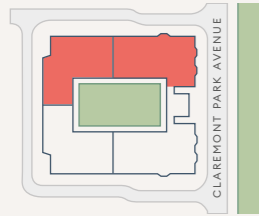
3 BEDROOM		C-00-10	
NSA	114.6 m²	1,234 sq ft	
Courtyard	12.0 m²	129 sq ft	
Living/Kitchen	4.35 x 8.15 m	14ft 3" x 26ft 9"	
Bedroom 1	2.61 x 3.60 m	8ft 7" x 11ft 10"	
Bedroom 2	2.64 x 3.51 m	8ft 8" x 11ft 6"	
Bedroom 3	2.64 x 5.43 m	8ft 8" x 17ft 10"	
Courtyard	7.30 x 1.52 m	23ft 11" x 5ft 0"	

3 BEDROOM		E-00-11	
NSA	114.6 m²	1,234 sq ft	
Courtyard	11.8 m²	127 sq ft	
Living/Kitchen	4.39 x 8.13 m	14ft 5" x 26ft 8"	
Bedroom 1	2.72 x 3.61 m	8ft 11" x 11ft 10"	
Bedroom 2	2.62 x 3.49 m	8ft 7" x 11ft 5"	
Bedroom 3	2.64 x 5.44 m	8ft 8" x 17ft 10"	
Courtyard	7.30 x 1.48 m	23ft 11" x 4ft 10"	

3 BEDROOM		E-00-12	
NSA	129.0 m²	1,389 sq ft	
Courtyard	13.7 m²	147 sq ft	
Living/Kitchen	5.46 x 7.63 m	17ft 11" x 25ft 0"	
Bedroom 1	2.89 x 3.52 m	9ft 6" x 11ft 7"	
Bedroom 2	2.78 x 4.42 m	9ft 1" x 14ft 6"	
Bedroom 3	2.79 x 4.11 m	9ft 2" x 13ft 6"	
Courtyard	8.56 x 1.48 m	28ft 1" x 4ft 10"	



EAST



- 1 bed apartment
- 2 bed apartment
- 3 bed apartment

Floorplans and listed apartment areas are for approximate measurements only. Dimensions are not intended to be used for carpet sizes, appliance sizes or items of furniture. Furniture shown is not included.



1 BEDROOM D-01-04

NSA	52.3 m²	563 sq ft
Living/Kitchen	4.20 x 6.30 m	13ft 9" x 20ft 8"
Bedroom	2.82 x 5.82 m	9ft 3" x 19ft 1"

1 BEDROOM F-01-03

NSA	54.5 m²	587 sq ft
Living/Kitchen	4.43 x 7.37 m	14ft 6" x 24ft 2"
Bedroom	2.71 x 4.67 m	8ft 11" x 15ft 4"

1 BEDROOM F-01-04

NSA	49.6 m²	534 sq ft
Living/Kitchen	3.74 x 6.29 m	12ft 3" x 20ft 8"
Bedroom	2.76 x 3.38 m	9ft 1" x 11ft 1"

2 BEDROOM D-01-01

NSA	68.5 m²	737 sq ft
Living/Kitchen	5.81 x 4.49 m	19ft 1" x 14ft 9"
Bedroom 1	4.17 x 2.73 m	13ft 8" x 8ft 11"
Bedroom 2	2.88 x 2.65 m	9ft 5" x 8ft 8"

2 BEDROOM D-01-05

NSA	71.5 m²	770 sq ft
Living/Kitchen	4.00 x 6.29 m	13ft 1" x 20ft 8"
Bedroom 1	2.84 x 4.67 m	9ft 4" x 15ft 4"
Bedroom 2	2.70 x 2.76 m	8ft 10" x 9ft 1"

2 BEDROOM D-01-06

NSA	74.5 m²	802 sq ft
Balcony	5.3 m²	57 sq ft
Living/Kitchen	6.39 x 4.57 m	21ft 0" x 15ft 0"
Bedroom 1	3.26 x 2.79 m	10ft 8" x 9ft 2"
Bedroom 2	2.76 x 3.58 m	9ft 1" x 11ft 9"
Balcony	2.96 x 1.95 m	10ft 9" x 6ft 5"

2 BEDROOM F-01-01

NSA	81.5 m²	877 sq ft
Balcony	5.9 m²	64 sq ft
Living	6.29 x 4.30 m	20ft 8" x 14ft 1"
Kitchen	1.67 x 3.22 m	5ft 6" x 10ft 7"
Bedroom 1	2.73 x 3.19 m	8ft 11" x 10ft 6"
Bedroom 2	2.73 x 3.86 m	8ft 11" x 12ft 8"
Balcony	1.50 x 3.63 m	4ft 11" x 11ft 11"

2 BEDROOM F-01-02

NSA	77.7 m²	836 sq ft
Balcony	5.9 m²	64 sq ft
Living	4.83 x 6.53 m	15ft 10" x 21ft 5"
Kitchen	1.33 x 3.35 m	4ft 4" x 11ft 0"
Bedroom 1	2.75 x 4.68 m	9ft 0" x 15ft 4"
Bedroom 2	2.76 x 3.36 m	9ft 1" x 11ft 0"
Balcony	1.72 x 3.86 m	5ft 8" x 12ft 8"

2 BEDROOM F-01-05

NSA	87.7 m²	944 sq ft
Living/Kitchen	4.69 x 6.38 m	15ft 5" x 20ft 11"
Bedroom 1	4.09 x 4.68 m	13ft 5" x 15ft 4"
Bedroom 2	2.93 x 4.27 m	9ft 7" x 14ft 0"

2 BEDROOM F-01-06

NSA	75.7 m²	815 sq ft
Balcony	6.9 m²	74 sq ft
Living/Kitchen	4.41 x 6.29 m	14ft 6" x 20ft 8"
Bedroom 1	2.91 x 4.67 m	9ft 7" x 15ft 4"
Bedroom 2	2.64 x 2.75 m	8ft 8" x 9ft 0"
Balcony	4.28 x 1.49 m	14ft 1" x 4ft 11"

3 BEDROOM D-01-02

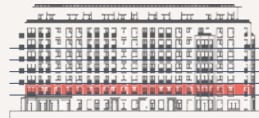
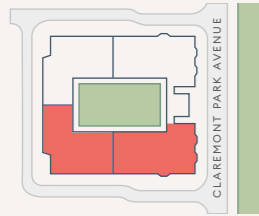
NSA	93.9 m²	1,011 sq ft
Balcony	7.9 m²	85 sq ft
Living/Kitchen	7.50 x 5.96 m	24ft 7" x 19ft 7"
Bedroom 1	3.48 x 3.32 m	11ft 5" x 10ft 11"
Bedroom 2	3.24 x 2.77 m	10ft 8" x 9ft 1"
Bedroom 3	3.24 x 2.59 m	10ft 8" x 8ft 6"
Balcony	1.74 x 4.16 m	5ft 9" x 13ft 8"

3 BEDROOM D-01-03

NSA	88.3 m²	950 sq ft
Balcony	6.9 m²	74 sq ft
Living/Kitchen	3.85 x 6.93 m	12ft 8" x 22ft 9"
Bedroom 1	2.75 x 4.66 m	9ft 0" x 15ft 3"
Bedroom 2	2.70 x 3.36 m	8ft 10" x 11ft 0"
Bedroom 3	2.70 x 3.36 m	8ft 10" x 11ft 0"
Balcony	4.28 x 1.49 m	14ft 1" x 4ft 11"



WEST



- 1 bed apartment
- 2 bed apartment
- 3 bed apartment

Floorplans and listed apartment areas are for approximate measurements only. Dimensions are not intended to be used for carpet sizes, appliance sizes or items of furniture. Furniture shown is not included.



1 BEDROOM C-01-04

NSA	52.3m²	563 sq ft
Living/Kitchen	4.20 x 6.30 m	13ft 9" x 20ft 8"
Bedroom	2.82 x 5.82 m	9ft 3" x 19ft 1"

1 BEDROOM E-01-03

NSA	54.5 m²	587 sq ft
Living/Kitchen	4.43 x 7.37 m	14ft 6" x 24ft 2"
Bedroom	2.71 x 4.67 m	8ft 11" x 15ft 4"

1 BEDROOM E-01-04

NSA	49.6 m²	534 sq ft
Living/Kitchen	3.74 x 6.29 m	12ft 3" x 20ft 8"
Bedroom	2.76 x 3.38 m	9ft 1" x 11ft 1"

2 BEDROOM C-01-01

NSA	68.5 m²	737 sq ft
Living/Kitchen	5.81 x 4.49 m	19ft 1" x 14ft 9"
Bedroom 1	4.17 x 2.73 m	13ft 8" x 8ft 11"
Bedroom 2	2.88 x 2.65 m	9ft 5" x 8ft 8"

2 BEDROOM C-01-05

NSA	71.5 m²	770 sq ft
Living/Kitchen	4.00 x 6.29 m	13ft 1" x 20ft 8"
Bedroom 1	2.84 x 4.67 m	9ft 4" x 15ft 4"
Bedroom 2	2.70 x 2.76 m	8ft 10" x 9ft 1"

2 BEDROOM C-01-06

NSA	74.5 m²	802 sq ft
Balcony	5.3 m²	57 sq ft
Living/Kitchen	6.39 x 4.57 m	21ft 0" x 15ft 0"
Bedroom 1	3.26 x 2.79 m	10ft 8" x 9ft 2"
Bedroom 2	2.76 x 3.58 m	9ft 1" x 11ft 9"
Balcony	2.96 x 1.95 m	10ft 9" x 6ft 5"

2 BEDROOM E-01-01

NSA	81.5 m²	877 sq ft
Balcony	5.9 m²	64 sq ft
Living	6.29 x 4.30 m	20ft 8" x 14ft 1"
Kitchen	1.67 x 3.22 m	5ft 6" x 10ft 7"
Bedroom 1	2.73 x 3.19 m	8ft 11" x 10ft 6"
Bedroom 2	2.73 x 3.86 m	8ft 11" x 12ft 8"
Balcony	1.50 x 3.63 m	4ft 11" x 11ft 11"

2 BEDROOM E-01-02

NSA	77.7 m²	836 sq ft
Balcony	5.9 m²	64 sq ft
Living	4.83 x 6.53 m	15ft 10" x 21ft 5"
Kitchen	1.33 x 3.35 m	4ft 4" x 11ft 0"
Bedroom 1	2.75 x 4.68 m	9ft 0" x 15ft 4"
Bedroom 2	2.76 x 3.36 m	9ft 1" x 11ft 0"
Balcony	1.72 x 3.86 m	5ft 8" x 12ft 8"

2 BEDROOM E-01-05

NSA	87.7 m²	944 sq ft
Living/Kitchen	4.69 x 6.38 m	15ft 5" x 20ft 11"
Bedroom 1	4.09 x 4.68 m	13ft 5" x 15ft 4"
Bedroom 2	2.93 x 4.27 m	9ft 7" x 14ft 0"

2 BEDROOM E-01-06

NSA	75.7 m²	815 sq ft
Balcony	6.9 m²	74 sq ft
Living/Kitchen	4.41 x 6.29 m	14ft 6" x 20ft 8"
Bedroom 1	2.91 x 4.67 m	9ft 7" x 15ft 4"
Bedroom 2	2.64 x 2.75 m	8ft 8" x 9ft 0"
Balcony	4.28 x 1.49 m	14ft 1" x 4ft 11"

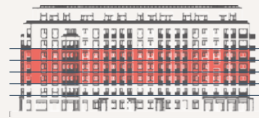
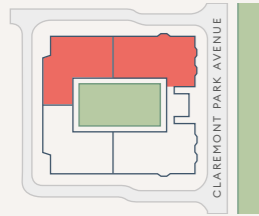
3 BEDROOM C-01-02

NSA	93.9 m²	1,011 sq ft
Balcony	7.9 m²	85 sq ft
Living/Kitchen	7.50 x 5.96 m	24ft 7" x 19ft 7"
Bedroom 1	3.48 x 3.32 m	11ft 5" x 10ft 11"
Bedroom 2	3.24 x 2.77 m	10ft 8" x 9ft 1"
Bedroom 3	3.24 x 2.59 m	10ft 8" x 8ft 6"
Balcony	1.74 x 4.16 m	5ft 9" x 13ft 8"

3 BEDROOM C-01-03

NSA	88.3 m²	950 sq ft
Balcony	6.9 m²	74 sq ft
Living/Kitchen	3.85 x 6.93 m	12ft 8" x 22ft 9"
Bedroom 1	2.75 x 4.66 m	9ft 0" x 15ft 3"
Bedroom 2	2.70 x 3.36 m	8ft 10" x 11ft 0"
Bedroom 3	2.70 x 3.36 m	8ft 10" x 11ft 0"
Balcony	4.28 x 1.49 m	14ft 1" x 4ft 11"

2-4 EAST



- 1 bed apartment
- 2 bed apartment
- 3 bed apartment

Floorplans and listed apartment areas are for approximate measurements only. Dimensions are not intended to be used for carpet sizes, appliance sizes or items of furniture. Furniture shown is not included.



1 BEDROOM D-02-04, D-03-04, D-04-04

NSA	53.4 m²	575 sq ft
Living/Kitchen	4.20 x 6.30 m	13ft 9" x 20ft 8"
Bedroom	2.82 x 5.82 m	9ft 3" x 19ft 1"

1 BEDROOM F-02-03, F-03-03, F-04-03

NSA	54.9 m²	591 sq ft
Living/Kitchen	4.43 x 7.37 m	14ft 6" x 24ft 2"
Bedroom	2.71 x 4.67 m	8ft 11" x 15ft 4"

1 BEDROOM F-02-04, F-03-04, F-04-04

NSA	50.7 m²	546 sq ft
Living/Kitchen	3.74 x 6.29 m	12ft 3" x 20ft 8"
Bedroom	2.76 x 3.38 m	9ft 1" x 11ft 1"

2 BEDROOM D-02-01, D-03-01, D-04-01

NSA	70.0 m²	753 sq ft
Balcony	6.0 m²	65 sq ft
Living/Kitchen	5.81 x 4.49 m	19ft 1" x 14ft 9"
Bedroom 1	4.17 x 2.73 m	13ft 8" x 8ft 11"
Bedroom 2	2.88 x 2.65 m	9ft 5" x 8ft 8"
Balcony	1.49 x 3.60 m	4ft 11" x 11ft 10"

2 BEDROOM D-02-05, D-03-05, D-04-05

NSA	73.0 m²	786 sq ft
Living/Kitchen	4.00 x 6.29 m	13ft 1" x 20ft 8"
Bedroom 1	2.84 x 4.67 m	9ft 4" x 15ft 4"
Bedroom 2	2.70 x 2.76 m	8ft 10" x 9ft 1"

2 BEDROOM D-02-06, D-03-06, D-04-06

NSA	76.6 m²	825 sq ft
Balcony	5.3 m²	57 sq ft
Living/Kitchen	6.39 x 4.57 m	21ft 0" x 15ft 0"
Bedroom 1	3.26 x 2.79 m	10ft 8" x 9ft 2"
Bedroom 2	2.76 x 3.58 m	9ft 1" x 11ft 9"
Balcony	2.96 x 1.95 m	10ft 9" x 6ft 5"

2 BEDROOM F-02-01, F-03-01, F-04-01

NSA	82.3 m²	886 sq ft
Balcony	5.9 m²	64 sq ft
Living	6.29 x 4.30 m	20ft 8" x 14ft 1"
Kitchen	1.67 x 3.22 m	5ft 6" x 10ft 7"
Bedroom 1	2.73 x 3.19 m	8ft 11" x 10ft 6"
Bedroom 2	2.73 x 3.86 m	8ft 11" x 12ft 8"
Balcony	1.50 x 3.63 m	4ft 11" x 11ft 11"

2 BEDROOM F-02-05, F-03-05, F-04-05

NSA	88.7 m²	955 sq ft
Living/Kitchen	4.69 x 6.38 m	15ft 5" x 20ft 11"
Bedroom 1	4.09 x 4.68 m	13ft 5" x 15ft 4"
Bedroom 2	2.93 x 4.27 m	9ft 7" x 14ft 0"

2 BEDROOM F-02-02, F-03-02, F-04-02

NSA	77.7 m²	836 sq ft
Balcony	5.9 m²	64 sq ft
Living	4.83 x 6.53 m	15ft 10" x 21ft 5"
Kitchen	1.33 x 3.35 m	4ft 4" x 11ft 0"
Bedroom 1	2.75 x 4.68 m	9ft 0" x 15ft 4"
Bedroom 2	2.76 x 3.36 m	9ft 1" x 11ft 0"
Balcony	1.72 x 3.86 m	5ft 8" x 12ft 8"

2 BEDROOM F-02-01, F-03-01, F-04-01

NSA	82.3 m²	886 sq ft
Balcony	5.9 m²	64 sq ft
Living	6.29 x 4.30 m	20ft 8" x 14ft 1"
Kitchen	1.67 x 3.22 m	5ft 6" x 10ft 7"
Bedroom 1	2.73 x 3.19 m	8ft 11" x 10ft 6"
Bedroom 2	2.73 x 3.86 m	8ft 11" x 12ft 8"
Balcony	1.50 x 3.63 m	4ft 11" x 11ft 11"

2 BEDROOM F-02-05, F-03-05, F-04-05

NSA	88.7 m²	955 sq ft
Living/Kitchen	4.69 x 6.38 m	15ft 5" x 20ft 11"
Bedroom 1	4.09 x 4.68 m	13ft 5" x 15ft 4"
Bedroom 2	2.93 x 4.27 m	9ft 7" x 14ft 0"

2 BEDROOM F-02-06, F-03-06, F-04-06

NSA	77.7 m²	836 sq ft
Balcony	5.9 m²	64 sq ft
Living	4.83 x 6.53 m	15ft 10" x 21ft 5"
Kitchen	1.33 x 3.35 m	4ft 4" x 11ft 0"
Bedroom 1	2.75 x 4.68 m	9ft 0" x 15ft 4"
Bedroom 2	2.76 x 3.36 m	9ft 1" x 11ft 0"
Balcony	1.72 x 3.86 m	5ft 8" x 12ft 8"

3 BEDROOM D-02-02, D-03-02, D-04-02

NSA	94.9 m²	1,021 sq ft
Balcony	7.9 m²	85 sq ft
Living/Kitchen	7.50 x 5.96 m	24ft 7" x 19ft 7"
Bedroom 1	3.48 x 3.32 m	11ft 5" x 10ft 11"
Bedroom 2	3.24 x 2.77 m	10ft 8" x 9ft 1"
Bedroom 3	3.24 x 2.59 m	10ft 8" x 8ft 6"
Balcony	1.74 x 4.16 m	5ft 9" x 13ft 8"

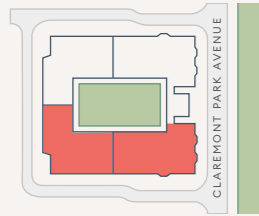
3 BEDROOM D-02-02, D-03-02, D-04-02

NSA	94.9 m²	1,021 sq ft
Living/Kitchen	7.50 x 5.96 m	24ft 7" x 19ft 7"
Bedroom 1	3.48 x 3.32 m	11ft 5" x 10ft 11"
Bedroom 2	3.24 x 2.77 m	10ft 8" x 9ft 1"
Bedroom 3	3.24 x 2.59 m	10ft 8" x 8ft 6"
Balcony	1.74 x 4.16 m	5ft 9" x 13ft 8"

3 BEDROOM D-02-03, D-03-03, D-04-03

NSA	88.3 m²	950 sq ft
Balcony	6.9 m²	74 sq ft
Living/Kitchen	3.85 x 6.93 m	12ft 8" x 22ft 9"
Bedroom 1	2.75 x 4.66 m	9ft 0" x 15ft 3"
Bedroom 2	2.70 x 3.36 m	8ft 10" x 11ft 0"
Bedroom 3	2.70 x 3.36 m	8ft 10" x 11ft 0"
Balcony	4.28 x 1.49 m	14ft 1" x 4ft 11"

2-4 WEST



- 1 bed apartment
- 2 bed apartment
- 3 bed apartment

Floorplans and listed apartment areas are for approximate measurements only. Dimensions are not intended to be used for carpet sizes, appliance sizes or items of furniture. Furniture shown is not included.



1 BEDROOM C-02-04, C-03-04, C-04-04

NSA	53.4 m²	575 sq ft
------------	---------------------------	------------------

Living/Kitchen	4.20 x 6.30 m	13ft 9" x 20ft 8"
Bedroom	2.82 x 5.82 m	9ft 3" x 19ft 1"

1 BEDROOM E-02-03, E-03-03, E-04-03

NSA	54.9 m²	591 sq ft
------------	---------------------------	------------------

Living/Kitchen	4.43 x 7.37 m	14ft 6" x 24ft 2"
Bedroom	2.71 x 4.67 m	8ft 11" x 15ft 4"

1 BEDROOM E-02-04, E-03-04, E-04-04

NSA	50.7 m²	546 sq ft
------------	---------------------------	------------------

Living/Kitchen	3.74 x 6.29 m	12ft 3" x 20ft 8"
Bedroom	2.76 x 3.38 m	9ft 1" x 11ft 1"

2 BEDROOM C-02-01, C-03-01, C-04-01

NSA	70.0 m²	753 sq ft
------------	---------------------------	------------------

Balcony	6.0 m²	65 sq ft
----------------	--------------------------	-----------------

Living/Kitchen	5.81 x 4.49 m	19ft 1" x 14ft 9"
Bedroom 1	4.17 x 2.73 m	13ft 8" x 8ft 11"
Bedroom 2	2.88 x 2.65 m	9ft 5" x 8ft 8"
Balcony	1.49 x 3.60 m	4ft 11" x 11ft 10"

2 BEDROOM C-02-05, C-03-05, C-04-05

NSA	73.0 m²	786 sq ft
------------	---------------------------	------------------

Living/Kitchen	4.00 x 6.29 m	13ft 1" x 20ft 8"
Bedroom 1	2.84 x 4.67 m	9ft 4" x 15ft 4"
Bedroom 2	2.70 x 2.76 m	8ft 10" x 9ft 1"

2 BEDROOM C-02-06, C-03-06, C-04-06

NSA	76.6 m²	825 sq ft
------------	---------------------------	------------------

Balcony	5.3 m²	57 sq ft
----------------	--------------------------	-----------------

Living/Kitchen	6.39 x 4.57 m	21ft 0" x 15ft 0"
Bedroom 1	3.26 x 2.79 m	10ft 8" x 9ft 2"
Bedroom 2	2.76 x 3.58 m	9ft 1" x 11ft 9"
Balcony	2.96 x 1.95 m	10ft 9" x 6ft 5"

2 BEDROOM E-02-01, E-03-01, E-04-01

NSA	82.3 m²	886 sq ft
------------	---------------------------	------------------

Balcony	5.9 m²	64 sq ft
----------------	--------------------------	-----------------

Living	6.29 x 4.30 m	20ft 8" x 14ft 1"
Kitchen	1.67 x 3.22 m	5ft 6" x 10ft 7"
Bedroom 1	2.73 x 3.19 m	8ft 11" x 10ft 6"
Bedroom 2	2.73 x 3.86 m	8ft 11" x 12ft 8"
Balcony	1.50 x 3.63 m	4ft 11" x 11ft 11"

2 BEDROOM E-02-02, E-03-02, E-04-02

NSA	77.7 m²	836 sq ft
------------	---------------------------	------------------

Balcony	5.9 m²	64 sq ft
----------------	--------------------------	-----------------

Living	4.83 x 6.53 m	15ft 10" x 21ft 5"
Kitchen	1.33 x 3.35 m	4ft 4" x 11ft 0"
Bedroom 1	2.75 x 4.68 m	9ft 0" x 15ft 4"
Bedroom 2	2.76 x 3.36 m	9ft 1" x 11ft 0"
Balcony	1.72 x 3.86 m	5ft 8" x 12ft 8"

2 BEDROOM E-02-05, E-03-05, E-04-05

NSA	88.7 m²	955 sq ft
------------	---------------------------	------------------

Living/Kitchen	4.69 x 6.38 m	15ft 5" x 20ft 11"
Bedroom 1	4.09 x 4.68 m	13ft 5" x 15ft 4"
Bedroom 2	2.93 x 4.27 m	9ft 7" x 14ft 0"

2 BEDROOM E-02-06, E-03-06, E-04-06

NSA	75.7 m²	815 sq ft
------------	---------------------------	------------------

Balcony	6.9 m²	74 sq ft
----------------	--------------------------	-----------------

Living/Kitchen	4.41 x 6.29 m	14ft 6" x 20ft 8"
Bedroom 1	2.91 x 4.67 m	9ft 7" x 15ft 4"
Bedroom 2	2.64 x 2.75 m	8ft 8" x 9ft 0"
Balcony	4.28 x 1.49 m	14ft 1" x 4ft 11"

3 BEDROOM C-02-02, C-03-02, C-04-02

NSA	94.9 m²	1,021 sq ft
------------	---------------------------	--------------------

Balcony	7.9 m²	85 sq ft
----------------	--------------------------	-----------------

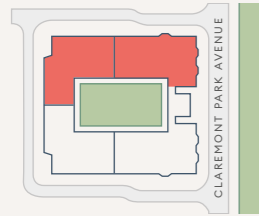
Living/Kitchen	7.50 x 5.96 m	24ft 7" x 19ft 7"
Bedroom 1	3.48 x 3.32 m	11ft 5" x 10ft 11"
Bedroom 2	3.24 x 2.77 m	10ft 8" x 9ft 1"
Bedroom 3	3.24 x 2.59 m	10ft 8" x 8ft 6"
Balcony	1.74 x 4.16 m	5ft 9" x 13ft 8"

3 BEDROOM C-02-03, C-03-03, C-04-03

NSA	88.3 m²	950 sq ft
------------	---------------------------	------------------

Balcony	6.9 m²	74 sq ft
----------------	--------------------------	-----------------

Living/Kitchen	3.85 x 6.93 m	12ft 8" x 22ft 9"
Bedroom 1	2.75 x 4.66 m	9ft 0" x 15ft 3"
Bedroom 2	2.70 x 3.36 m	8ft 10" x 11ft 0"
Bedroom 3	2.70 x 3.36 m	8ft 10" x 11ft 0"
Balcony	4.28 x 1.49 m	14ft 1" x 4ft 11"



- Studio
- 1 bed apartment
- 2 bed apartment
- 3 bed apartment

Floorplans and listed apartment areas are for approximate measurements only. Dimensions are not intended to be used for carpet sizes, appliance sizes or items of furniture. Furniture shown is not included.



STUDIO D-05-01

NSA	45.2 m²	487 sq ft
Balcony	6.0 m²	65 sq ft
Living/Kitchen	5.79 x 3.57 m	19ft 0" x 11ft 9"
Bedroom	3.51 x 3.32 m	11ft 6" x 10ft 11"
Balcony	1.49 x 3.60 m	4ft 11" x 11ft 10"

1 BEDROOM D-05-04

NSA	53.4 m²	575 sq ft
Living/Kitchen	4.20 x 6.30 m	13ft 9" x 20ft 8"
Bedroom	2.82 x 5.82 m	9ft 3" x 19ft 1"

1 BEDROOM F-05-03

NSA	54.9 m²	591 sq ft
Living/Kitchen	4.43 x 7.37 m	14ft 6" x 24ft 2"
Bedroom	2.71 x 4.67 m	8ft 11" x 15ft 4"

1 BEDROOM F-05-04

NSA	50.7 m²	546 sq ft
Living/Kitchen	3.74 x 6.29 m	12ft 3" x 20ft 8"
Bedroom	2.76 x 3.38 m	9ft 1" x 11ft 1"

2 BEDROOM D-05-05

NSA	73.0 m²	786 sq ft
Living/Kitchen	4.00 x 6.29 m	13ft 1" x 20ft 8"
Bedroom 1	2.84 x 4.67 m	9ft 4" x 15ft 4"
Bedroom 2	2.70 x 2.76 m	8ft 10" x 9ft 1"

2 BEDROOM D-05-06

NSA	76.6 m²	825 sq ft
Balcony	5.3 m²	57 sq ft
Living/Kitchen	6.39 x 4.57 m	21ft 0" x 15ft 0"
Bedroom 1	3.26 x 2.79 m	10ft 8" x 9ft 2"
Bedroom 2	2.76 x 3.58 m	9ft 1" x 11ft 9"
Balcony	2.74 x 1.95 m	9ft 0" x 6ft 5"

2 BEDROOM F-05-01

NSA	82.3 m²	886 sq ft
Balcony	5.9 m²	64 sq ft

Living	6.29 x 4.30 m	20ft 8" x 14ft 1"
Kitchen	1.67 x 3.22 m	5ft 6" x 10ft 7"
Bedroom 1	2.73 x 3.19 m	8ft 11" x 10ft 6"
Bedroom 2	2.73 x 3.86 m	8ft 11" x 12ft 8"
Balcony	1.50 x 3.63 m	4ft 11" x 11ft 11"

2 BEDROOM F-05-02

NSA	77.7 m²	836 sq ft
Balcony	5.9 m²	64 sq ft

Living	4.83 x 6.52 m	15ft 10" x 21ft 5"
Kitchen	1.33 x 3.35 m	4ft 4" x 11ft 0"
Bedroom 1	2.75 x 4.68 m	9ft 0" x 15ft 4"
Bedroom 2	2.76 x 3.36 m	9ft 1" x 11ft 0"
Balcony	1.50 x 3.63 m	4ft 11" x 11ft 11"

2 BEDROOM F-05-05

NSA	88.7 m²	955 sq ft
Living/Kitchen	4.69 x 6.38 m	15ft 5" x 20ft 11"
Bedroom 1	4.09 x 4.68 m	13ft 5" x 15ft 4"
Bedroom 2	2.93 x 4.27 m	9ft 7" x 14ft 0"

2 BEDROOM F-05-06

NSA	75.7 m²	815 sq ft
Balcony	6.9 m²	74 sq ft

Living/Kitchen	4.41 x 6.29 m	14ft 6" x 20ft 8"
Bedroom 1	2.91 x 4.67 m	9ft 7" x 15ft 4"
Bedroom 2	2.64 x 2.75 m	8ft 8" x 9ft 0"
Balcony	4.28 x 1.49 m	14ft 1" x 4ft 11"

3 BEDROOM D-05-02

NSA	109.0 m²	1,173 sq ft
Balcony	7.9 m²	85 sq ft

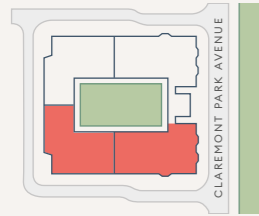
Living	4.40 x 5.44 m	14ft 5" x 17ft 10"
Kitchen	5.51 x 3.20 m	18ft 1" x 10ft 6"
Bedroom 1	4.37 x 3.40 m	14ft 4" x 11ft 2"
Bedroom 2	3.40 x 3.35 m	11ft 2" x 11ft 0"
Bedroom 3	3.43 x 3.26 m	11ft 3" x 10ft 8"
Balcony	1.74 x 4.16 m	5ft 9" x 13ft 8"

3 BEDROOM D-05-03

NSA	88.3 m²	950 sq ft
Balcony	6.9 m²	74 sq ft

Living/Kitchen	3.85 x 6.93 m	12ft 8" x 22ft 9"
Bedroom 1	2.75 x 4.66 m	9ft 0" x 15ft 3"
Bedroom 2	2.70 x 3.36 m	8ft 10" x 11ft 0"
Bedroom 3	2.70 x 3.36 m	8ft 10" x 11ft 0"
Balcony	4.28 x 1.49 m	4ft 11" x 14ft 1"

5 WEST



- Studio
- 1 bed apartment
- 2 bed apartment
- 3 bed apartment

Floorplans and listed apartment areas are for approximate measurements only. Dimensions are not intended to be used for carpet sizes, appliance sizes or items of furniture. Furniture shown is not included.



STUDIO C-05-01

NSA	45.2 m²	487 sq ft
Balcony	6.0 m²	65 sq ft
Living/Kitchen	5.79 x 3.57 m	19ft 0" x 11ft 9"
Bedroom	3.51 x 3.32 m	11ft 6" x 10ft 11"
Balcony	1.49 x 3.60 m	4ft 11" x 11ft 10"

1 BEDROOM E-05-03

NSA	54.9 m²	591 sq ft
Living/Kitchen	4.43 x 7.37 m	14ft 6" x 24ft 2"
Bedroom	2.71 x 4.67 m	8ft 11" x 15ft 4"

1 BEDROOM E-05-04

NSA	50.7 m²	546 sq ft
Living/Kitchen	3.74 x 6.29 m	12ft 3" x 20ft 8"
Bedroom	2.76 x 3.38 m	9ft 1" x 11ft 1"

1 BEDROOM C-05-04

NSA	53.4 m²	575 sq ft
Living/Kitchen	4.20 x 6.30 m	13ft 9" x 20ft 8"
Bedroom	2.82 x 5.82 m	9ft 3" x 19ft 1"

2 BEDROOM C-05-05

NSA	73.0 m²	786 sq ft
Living/Kitchen	4.00 x 6.29 m	13ft 1" x 20ft 8"
Bedroom 1	2.84 x 4.67 m	9ft 4" x 15ft 4"
Bedroom 2	2.70 x 2.76 m	8ft 10" x 9ft 1"

2 BEDROOM C-05-06

NSA	76.6 m²	825 sq ft
Balcony	5.3 m²	57 sq ft
Living/Kitchen	6.39 x 4.57 m	21ft 0" x 15ft 0"
Bedroom 1	3.26 x 2.79 m	10ft 8" x 9ft 2"
Bedroom 2	2.76 x 3.58 m	9ft 1" x 11ft 9"
Balcony	2.74 x 1.95 m	9ft 0" x 6ft 5"

2 BEDROOM C-05-05

1 BEDROOM C-05-04

2 BEDROOM E-05-01

NSA	82.3 m²	886 sq ft
Balcony	5.9 m²	64 sq ft
Living	6.29 x 4.30 m	20ft 8" x 14ft 1"
Kitchen	1.67 x 3.22 m	5ft 6" x 10ft 7"
Bedroom 1	2.73 x 3.19 m	8ft 11" x 10ft 6"
Bedroom 2	2.73 x 3.86 m	8ft 11" x 12ft 8"
Balcony	1.50 x 3.63 m	4ft 11" x 11ft 11"

2 BEDROOM E-05-02

NSA	77.7 m²	836 sq ft
Balcony	5.9 m²	64 sq ft
Living	4.83 x 6.52 m	15ft 10" x 21ft 5"
Kitchen	1.33 x 3.35 m	4ft 4" x 11ft 0"
Bedroom 1	2.75 x 4.68 m	9ft 0" x 15ft 4"
Bedroom 2	2.76 x 3.36 m	9ft 1" x 11ft 0"
Balcony	1.50 x 3.63 m	4ft 11" x 11ft 11"

2 BEDROOM E-05-06

2 BEDROOM E-05-05

NSA	88.7 m²	955 sq ft
Living/Kitchen	4.69 x 6.38 m	15ft 5" x 20ft 11"
Bedroom 1	4.09 x 4.68 m	13ft 5" x 15ft 4"
Bedroom 2	2.93 x 4.27 m	9ft 7" x 14ft 0"

2 BEDROOM E-05-06

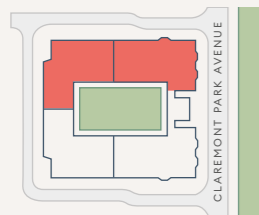
NSA	75.7 m²	815 sq ft
Balcony	6.9 m²	74 sq ft
Living/Kitchen	4.41 x 6.29 m	14ft 6" x 20ft 8"
Bedroom 1	2.91 x 4.67 m	9ft 7" x 15ft 4"
Bedroom 2	2.64 x 2.75 m	8ft 8" x 9ft 0"
Balcony	4.28 x 1.49 m	14ft 1" x 4ft 11"

3 BEDROOM C-05-02

NSA	109.0 m²	1,173 sq ft
Balcony	7.9 m²	85 sq ft
Living	4.40 x 5.44 m	14ft 5" x 17ft 10"
Kitchen	5.51 x 3.20 m	18ft 1" x 10ft 6"
Bedroom 1	4.37 x 3.40 m	14ft 4" x 11ft 2"
Bedroom 2	3.40 x 3.35 m	11ft 2" x 11ft 0"
Bedroom 3	3.43 x 3.26 m	11ft 3" x 10ft 8"
Balcony	1.74 x 4.16 m	5ft 9" x 13ft 8"

3 BEDROOM C-05-03

NSA	88.3 m²	950 sq ft
Balcony	6.9 m²	74 sq ft
Living/Kitchen	3.85 x 6.93 m	12ft 8" x 22ft 9"
Bedroom 1	2.75 x 4.66 m	9ft 0" x 15ft 3"
Bedroom 2	2.70 x 3.36 m	8ft 10" x 11ft 0"
Bedroom 3	2.70 x 3.36 m	8ft 10" x 11ft 0"
Balcony	4.28 x 1.49 m	4ft 11" x 14ft 1"



- Studio
- 1 bed apartment
- 2 bed apartment
- 3 bed apartment

Floorplans and listed apartment areas are for approximate measurements only. Dimensions are not intended to be used for carpet sizes, appliance sizes or items of furniture. Furniture shown is not included.



STUDIO D-06-01

NSA	45.2 m²	487 sq ft
Balcony	6.0 m²	65 sq ft
Living/Kitchen	5.79 x 3.57 m	19ft 0" x 11ft 9"
Bedroom	3.49 x 3.32 m	11ft 5" x 10ft 11"
Balcony	1.49 x 3.60 m	4ft 11" x 11ft 10"

1 BEDROOM D-06-04

NSA	53.4 m²	575 sq ft
Living/Kitchen	4.20 x 6.30 m	13ft 9" x 20ft 8"
Bedroom	2.82 x 5.82 m	9ft 3" x 19ft 1"

1 BEDROOM F-06-03

NSA	50.9 m²	548 sq ft
Living/Kitchen	4.46 x 6.27 m	14ft 8" x 20ft 7"
Bedroom	2.68 x 4.67 m	8ft 10" x 15ft 4"

1 BEDROOM F-06-04

NSA	50.7 m²	546 sq ft
Living/Kitchen	3.74 x 6.29 m	12ft 3" x 20ft 8"
Bedroom	2.76 x 3.38 m	9ft 1" x 11ft 1"

2 BEDROOM D-06-05

NSA	73.0 m²	786 sq ft
Living/Kitchen	4.00 x 6.29 m	13ft 1" x 20ft 8"
Bedroom 1	2.84 x 4.67 m	9ft 4" x 15ft 4"
Bedroom 2	2.70 x 2.76 m	8ft 10" x 9ft 1"

2 BEDROOM D-06-06

NSA	76.7 m²	826 sq ft
Balcony	5.1 m²	55 sq ft
Living/Kitchen	6.39 x 4.57 m	21ft 0" x 15ft 0"
Bedroom 1	3.26 x 2.79 m	10ft 8" x 9ft 2"
Bedroom 2	2.76 x 3.58 m	9ft 1" x 11ft 9"
Balcony	2.74 x 1.86 m	9ft 0" x 6ft 1"

2 BEDROOM F-06-01

NSA	78.7 m²	847 sq ft
Living	5.34 x 4.30 m	17ft 6" x 14ft 1"
Kitchen	1.68 x 3.24 m	5ft 6" x 10ft 8"
Bedroom 1	2.73 x 3.85 m	8ft 11" x 12ft 8"
Bedroom 2	2.71 x 3.21 m	8ft 11" x 10ft 6"

2 BEDROOM F-06-02

NSA	74.1 m²	798 sq ft
Living	3.85 x 6.53 m	12ft 8" x 21ft 5"
Kitchen	1.45 x 3.34 m	4ft 9" x 10ft 11"
Bedroom 1	2.74 x 4.66 m	9ft 0" x 15ft 3"
Bedroom 2	2.64 x 3.36 m	8ft 8" x 11ft 0"

2 BEDROOM F-06-05

NSA	88.7 m²	955 sq ft
Living/Kitchen	4.69 x 6.38 m	15ft 5" x 20ft 11"
Bedroom 1	4.09 x 4.68 m	13ft 5" x 15ft 4"
Bedroom 2	2.93 x 4.27 m	9ft 7" x 14ft 0"

2 BEDROOM F-06-06

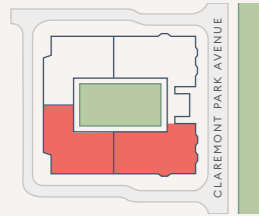
NSA	75.7 m²	815 sq ft
Balcony	6.9 m²	74 sq ft
Living/Kitchen	4.41 x 6.29 m	14ft 6" x 20ft 8"
Bedroom 1	2.91 x 4.67 m	9ft 7" x 15ft 4"
Bedroom 2	2.64 x 2.75 m	8ft 8" x 9ft 0"
Balcony	4.28 x 1.49 m	14ft 1" x 4ft 11"

3 BEDROOM D-06-03

NSA	88.3 m²	950 sq ft
Balcony	6.9 m²	74 sq ft
Living/Kitchen	3.85 x 6.93 m	12ft 8" x 22ft 9"
Bedroom 1	2.75 x 4.66 m	9ft 0" x 15ft 3"
Bedroom 2	2.70 x 3.36 m	8ft 10" x 11ft 0"
Bedroom 3	2.70 x 3.36 m	8ft 10" x 11ft 0"
Balcony	4.28 x 1.49 m	4ft 11" x 14ft 1"



WEST



- Studio
- 1 bed apartment
- 2 bed apartment
- 3 bed apartment

Floorplans and listed apartment areas are for approximate measurements only. Dimensions are not intended to be used for carpet sizes, appliance sizes or items of furniture. Furniture shown is not included.



STUDIO C-06-01

NSA	45.2 m²	487 sq ft
Balcony	6.0 m²	65 sq ft
Living/Kitchen	5.79 x 3.57 m	19ft 0" x 11ft 9"
Bedroom	3.49 x 3.32 m	11ft 5" x 10ft 11"
Balcony	1.49 x 3.60 m	4ft 11" x 11ft 10"

1 BEDROOM C-06-04

NSA	53.4 m²	575 sq ft
Living/Kitchen	4.20 x 6.30 m	13ft 9" x 20ft 8"
Bedroom	2.82 x 5.82 m	9ft 3" x 19ft 1"

1 BEDROOM E-06-03

NSA	50.9 m²	548 sq ft
Living/Kitchen	4.46 x 6.27 m	14ft 8" x 20ft 7"
Bedroom	2.68 x 4.67 m	8ft 10" x 15ft 4"

1 BEDROOM E-06-04

NSA	50.7 m²	546 sq ft
Living/Kitchen	3.74 x 6.29 m	12ft 3" x 20ft 8"
Bedroom	2.76 x 3.38 m	9ft 1" x 11ft 1"

2 BEDROOM C-06-05

NSA	73.0 m²	786 sq ft
Living/Kitchen	4.00 x 6.29 m	13ft 1" x 20ft 8"
Bedroom 1	2.84 x 4.67 m	9ft 4" x 15ft 4"
Bedroom 2	2.70 x 2.76 m	8ft 10" x 9ft 1"

2 BEDROOM C-06-06

NSA	76.7 m²	826 sq ft
Balcony	5.1 m²	55 sq ft
Living/Kitchen	6.39 x 4.57 m	21ft 0" x 15ft 0"
Bedroom 1	3.26 x 2.79 m	10ft 8" x 9ft 2"
Bedroom 2	2.76 x 3.58 m	9ft 1" x 11ft 9"
Balcony	2.74 x 1.86 m	9ft 0" x 6ft 1"

2 BEDROOM E-06-01

NSA	78.7 m²	847 sq ft
Living	5.34 x 4.30 m	17ft 6" x 14ft 1"
Kitchen	1.68 x 3.24 m	5ft 6" x 10ft 8"
Bedroom 1	2.73 x 3.85 m	8ft 11" x 12ft 8"
Bedroom 2	2.71 x 3.21 m	8ft 11" x 10ft 6"

2 BEDROOM E-06-02

NSA	74.1 m²	798 sq ft
Living	3.85 x 6.53 m	12ft 8" x 21ft 5"
Kitchen	1.45 x 3.34 m	4ft 9" x 10ft 11"
Bedroom 1	2.74 x 4.66 m	9ft 0" x 15ft 3"
Bedroom 2	2.64 x 3.36 m	8ft 8" x 11ft 0"

2 BEDROOM E-06-05

NSA	88.7 m²	955 sq ft
Living/Kitchen	4.69 x 6.38 m	15ft 5" x 20ft 11"
Bedroom 1	4.09 x 4.68 m	13ft 5" x 15ft 4"
Bedroom 2	2.93 x 4.27 m	9ft 7" x 14ft 0"

2 BEDROOM E-06-06

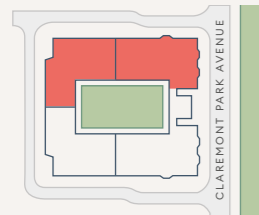
NSA	75.7 m²	815 sq ft
Balcony	6.9 m²	74 sq ft
Living/Kitchen	4.41 x 6.29 m	14ft 6" x 20ft 8"
Bedroom 1	2.91 x 4.67 m	9ft 7" x 15ft 4"
Bedroom 2	2.64 x 2.75 m	8ft 8" x 9ft 0"
Balcony	4.28 x 1.49 m	14ft 1" x 4ft 11"

3 BEDROOM C-06-03

NSA	88.3 m²	950 sq ft
Balcony	6.9 m²	74 sq ft
Living/Kitchen	3.85 x 6.93 m	12ft 8" x 22ft 9"
Bedroom 1	2.75 x 4.66 m	9ft 0" x 15ft 3"
Bedroom 2	2.70 x 3.36 m	8ft 10" x 11ft 0"
Bedroom 3	2.70 x 3.36 m	8ft 10" x 11ft 0"
Balcony	4.28 x 1.49 m	14ft 1" x 4ft 11"



EAST



- Studio
- 1 bed apartment
- 2 bed apartment
- 3 bed apartment

Floorplans and listed apartment areas are for approximate measurements only. Dimensions are not intended to be used for carpet sizes, appliance sizes or items of furniture. Furniture shown is not included.



STUDIO D-07-03

NSA	47.9 m²	516 sq ft
Terrace	15.0 m²	161 sq ft

Living/Kitchen	5.63 x 4.86 m	18ft 6" x 15ft 11"
Bedroom	3.33 x 3.86 m	10ft 11" x 12ft 8"
Terrace	9.81 x 1.40 m	32ft 2" x 4ft 7"

1 BEDROOM D-07-02

NSA	48.9 m²	526 sq ft
Terrace	13.4 m²	144 sq ft

Living/Kitchen	5.65 x 4.26 m	18ft 6" x 13ft 0"
Bedroom	2.74 x 3.81 m	8ft 12" x 12ft 6"
Terrace	8.61 x 1.40 m	28ft 3" x 4ft 7"

2 BEDROOM D-07-04

NSA	74.3 m²	800 sq ft
Terrace	34.1 m²	367 sq ft

Living/Kitchen	5.45 x 3.97 m	17ft 11" x 13ft 0"
Bedroom 1	4.37 x 2.75 m	14ft 4" x 9ft 0"
Bedroom 2	3.06 x 2.70 m	10ft 0" x 8ft 10"
Terrace	1.40 x 15.73 m	4ft 7" x 51ft 7"

2 BEDROOM F-07-01

NSA	87.8 m²	945 sq ft
Terraces	55.2 m²	594 sq ft

Living	3.38 x 4.68 m	11ft 1" x 15ft 4"
Kitchen	5.25 x 2.39 m	17ft 3" x 7ft 10"
Bedroom 1	4.10 x 3.49 m	13ft 5" x 11ft 5"
Bedroom 2	4.00 x 2.65 m	13ft 1" x 8ft 8"
Terrace 1	1.63 x 11.02 m	5ft 4" x 36ft 2"
Terrace 2	7.39 x 1.40 m	24ft 3" x 4ft 7"
Terrace 3	8.42 x 1.63 m	27ft 7" x 5ft 4"

2 BEDROOM F-07-02

NSA	71.4 m²	769 sq ft
Terrace	22.3 m²	240 sq ft

Living/Kitchen	6.78 x 4.26 m	22ft 3" x 13ft 12"
Bedroom 1	3.40 x 4.22 m	11ft 2" x 13ft 10"
Bedroom 2	3.89 x 2.65 m	12ft 9" x 8ft 8"
Terrace	14.74 x 1.44 m	48ft 4" x 4ft 9"

2 BEDROOM F-07-03

NSA	76.5 m²	823 sq ft
Terrace	12.2 m²	131 sq ft

Living/Kitchen	4.69 x 6.64 m	15ft 5" x 21ft 9"
Bedroom 1	2.74 x 4.22 m	9ft 0" x 13ft 10"
Bedroom 2	2.73 x 3.89 m	8ft 11" x 12ft 9"
Terrace	8.05 x 1.40 m	26ft 5" x 4ft 7"

2 BEDROOM F-07-04

NSA	75.7 m²	815 sq ft
------------	---------------------------	------------------

Living/Kitchen	4.41 x 6.29 m	14ft 6" x 20ft 8"
Bedroom 1	2.91 x 4.68 m	9ft 7" x 15ft 4"
Bedroom 2	2.64 x 2.76 m	8ft 8" x 9ft 1"

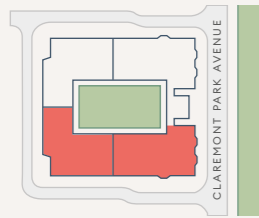
3 BEDROOM D-07-01

NSA	88.4 m²	952 sq ft
------------	---------------------------	------------------

Living/Kitchen	3.85 x 6.94 m	12ft 8" x 22ft 9"
Bedroom 1	2.75 x 4.67 m	9ft 0" x 15ft 4"
Bedroom 2	2.70 x 3.36 m	8ft 10" x 10ft 0"
Bedroom 3	2.70 x 3.36 m	8ft 10" x 10ft 0"



WEST



- ◻ Studio
- ◻ 1 bed apartment
- ◻ 2 bed apartment
- ◻ 3 bed apartment

Floorplans and listed apartment areas are for approximate measurements only. Dimensions are not intended to be used for carpet sizes, appliance sizes or items of furniture. Furniture shown is not included.



STUDIO C-07-03

NSA	47.9 m²	516 sq ft
Terrace	15.0 m²	161 sq ft
Living/Kitchen	5.63 x 4.86 m	18ft 6" x 15ft 11"
Bedroom	3.33 x 3.86 m	10ft 11" x 12ft 8"
Terrace	9.81 x 1.40 m	32ft 2" x 4ft 7"

1 BEDROOM C-07-02

NSA	48.9 m²	526 sq ft
Terrace	13.4 m²	144 sq ft
Living/Kitchen	5.65 x 4.26 m	18ft 6" x 13ft 0"
Bedroom	2.74 x 3.81 m	8ft 12" x 12ft 6"
Terrace	8.61 x 1.40 m	28ft 3" x 4ft 7"

2 BEDROOM C-07-04

NSA	74.3 m²	800 sq ft
Terrace	34.1 m²	367 sq ft
Living/Kitchen	5.45 x 3.97 m	17ft 11" x 13ft 0"
Bedroom 1	4.37 x 2.75 m	14ft 4" x 9ft 0"
Bedroom 2	3.06 x 2.70 m	10ft 0" x 8ft 10"
Terrace	1.40 x 15.73 m	4ft 7" x 51ft 7"

2 BEDROOM E-07-01

NSA	87.8 m²	945 sq ft
Terraces	55.2 m²	594 sq ft
Living	3.38 x 4.68 m	11ft 1" x 15ft 4"
Kitchen	5.25 x 2.39 m	17ft 3" x 7ft 10"
Bedroom 1	4.10 x 3.49 m	13ft 5" x 11ft 5"
Bedroom 2	4.00 x 2.65 m	13ft 1" x 8ft 8"
Terrace 1	1.63 x 11.02 m	5ft 4" x 36ft 2"
Terrace 2	7.39 x 1.40 m	24ft 3" x 4ft 7"
Terrace 3	8.42 x 1.63 m	27ft 7" x 5ft 4"

2 BEDROOM E-07-02

NSA	71.4 m²	769 sq ft
Terrace	22.3 m²	240 sq ft
Living/Kitchen	6.78 x 4.26 m	22ft 3" x 13ft 12"
Bedroom 1	3.40 x 4.22 m	11ft 2" x 13ft 10"
Bedroom 2	3.89 x 2.65 m	12ft 9" x 8ft 8"
Terrace	14.74 x 1.44 m	48ft 4" x 4ft 9"

2 BEDROOM E-07-03

NSA	76.5 m²	823 sq ft
Terrace	12.2 m²	131 sq ft
Living/Kitchen	4.69 x 6.64 m	15ft 5" x 21ft 9"
Bedroom 1	2.74 x 4.22 m	9ft 0" x 13ft 10"
Bedroom 2	2.73 x 3.89 m	8ft 11" x 12ft 9"
Terrace	8.05 x 1.40 m	26ft 5" x 4ft 7"

2 BEDROOM E-07-04

NSA	75.7 m²	815 sq ft
Living/Kitchen	4.41 x 6.29 m	14ft 6" x 20ft 8"
Bedroom 1	2.91 x 4.68 m	9ft 7" x 15ft 4"
Bedroom 2	2.64 x 2.76 m	8ft 8" x 9ft 1"

3 BEDROOM C-07-01

NSA	88.4 m²	952 sq ft
Living/Kitchen	3.85 x 6.94 m	12ft 8" x 22ft 9"
Bedroom 1	2.75 x 4.67 m	9ft 0" x 15ft 4"
Bedroom 2	2.70 x 3.36 m	8ft 10" x 10ft 0"
Bedroom 3	2.70 x 3.36 m	8ft 10" x 10ft 0"

Building

The Delamarre is one of the first buildings in Brent Cross Town, designed by architects Maccreeanor Lavington with interiors by Woods Bagot. The design is a C-shaped building with bay-fronted brick mansion block, comprising seven storeys with 170 studio, one, two, and three-bedroom apartments.

The building structure consists of a reinforced concrete frame and reinforced concrete piled foundations. The external envelop includes walls of a quality brick finish with pre-cast concrete windowsills, painted metal balconies and railings, and double-glazed windows and doors to balconies and terraces respectively.

The apartments enjoy views across a number of green spaces, including the internal courtyard garden, Pocket Park, Claremont Park and the playing fields beyond.

The courtyard garden has a combination of planted landscaping and hard landscape finishes. Specific ground floor units include a private terrace adjacent the residents' garden.

The Claremont Park Club

The residents' club is located on the ground floor across both buildings, The Ashbee and The Delamarre and comprises, Club Lobby, Concierge, Residents' Lounge, Gymnasium, Fitness Studio, Workspace, Meeting Room, Private Dining Room, and Screening Room.

Kitchens

Fitted with both high-level units and base cupboards, in a blue finish, with soft push doors, integrated extractor hood and lighting to underside of overhead cupboards.

Where applicable, a bespoke metal shelving unit frames the end of the kitchen worktop.

Worktops are a technical stone with stainless-steel single undermounted sink with a white ceramic tile splashback. Where provided, kitchen islands comprise the same suite of finishes.

High-quality appliances include:

- Four zone electric induction hob. (Studios: two zone induction hob)
- Integrated and multifunction electric combination microwave and oven located in full-height cabinet. (Studios: in base unit)
- Integrated dishwasher
- Integrated full-height fridge freezer (Studios: under counter)
- Integrated cold/hot water and instant boiling water tap
- Integrated pull-out waste bins
- Washer/dryer located in the MEP cupboard

Bathrooms

Both family and en-suite bathrooms are fitted with large format porcelain tiles to floor and a mix of porcelain, white glazed tiles and painted finish to the walls.

Bathrooms also include bespoke storage cabinet mounted on a mirrored wall, with feature lighting and low-level open storage cabinet.

Where featured, family bathrooms have baths with walk-in showers to en-suites, both with glazed shower screen, shower mixer and detachable handset.

White ceramics with wall hung WC and wash basin.

High-quality brassware and heated towel rail all with stainless-steel finish.

Wardrobes and Joinery

All primary bedrooms include integrated wardrobes with soft close doors, inset handles and feature a high-level shelf and hanging rail. This also extends to cloak cupboards, where provided.

Studio apartments provide a bespoke room dividing joinery feature, with open shelving at mid to high level, and a desk and drawer units at low level. This piece is finished in blue with reeded glass.

Where applicable, some apartments include feature shelving.

Flooring

Dark oak engineered timber floor in herringbone pattern to all living rooms except bathrooms and bedrooms.

Carpet in bedrooms.

Large format porcelain tiles to bathrooms.

Balconies and Terraces

Where provided, these include powder coated metal balustrades and decking.

Decoration

All internal walls, ceilings, doors, door frames and skirtings are finished in a white paint.

Heating and Cooling

Brent Cross Town has partnered with energy provider Vattenfall, to establish a sitewide heating network that will provide low carbon-emission heat to our new neighbourhood (for all heat supplies controlled by Brent Cross Town). The electricity supplier will be the choice of the purchaser.

All apartments will be individually metered for both heat and electricity.

All bedrooms and living spaces will include underfloor heating. All apartments offer openable windows for ventilation.

Electrical

Energy efficient LED lighting fitted to all rooms.

TV/FM and telephone points for broadband internet access in living room and Bedroom 1s where appropriate.

The Brent Cross Town development is served by a fibre network, with connection to the network to be arranged by the purchaser.

Hard wired smoke/heat detectors fitted as standard.

Lifts

Every apartment can be reached via a choice of two lifts.

Car Parking

Limited secure car parking spaces and cycle storage is available for residents within the basement.

Car parking is subject to availability and at an extra cost, cycle spaces at no extra cost.

Security

Fob access control to all building entrances, car park and lifts.

Entry phone system connects all apartments to main entrance door.

CCTV surveillance to public areas.

Management and 24-hour estate security.

Peace of Mind

Concierge service.

Parcel store for oversized deliveries.

All apartments benefit from a 10-year NHBC warranty.

Leasehold c.999 years.

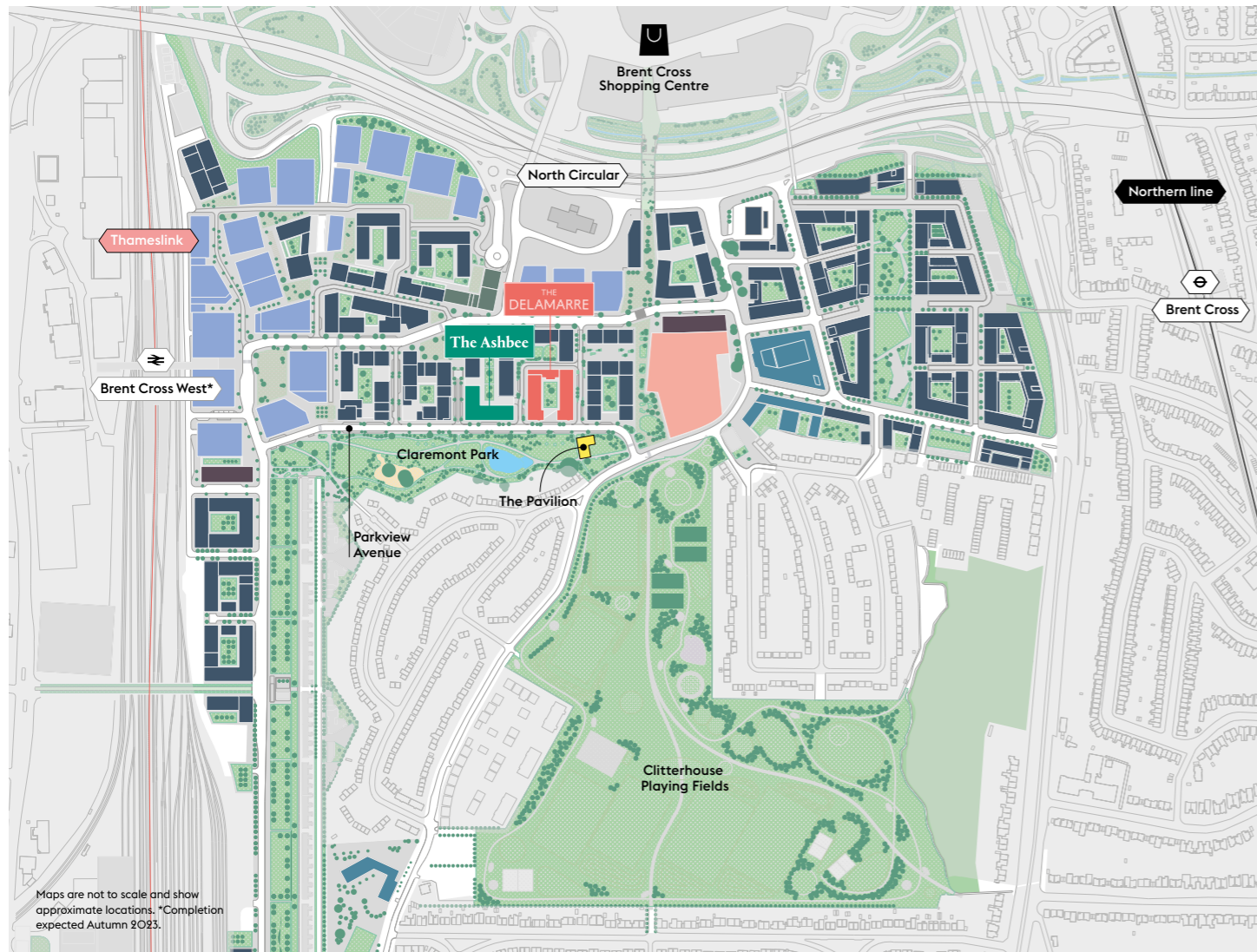
External cleaning will be carried out on a managed programme to ensure the building is kept to a high standard.

A service charge will be payable by apartment owners to cover costs of building services, building maintenance, cleaning, and insurance. A fixed contribution towards costs of Estate Management will also be payable for services such as site wide security, cleaning and maintenance, amenities, and landscaping.

Notes: A management company will be appointed to provide building management services.

The design development of The Delamarre is still ongoing and certain items of the specification may be amended to an item of equivalent or similar quality.





COME AND VISIT US

**Brent Cross Town
Visitor Pavilion**
145 Claremont Road
Brent Cross
London
NW2 1FE

Residential Sales:
+44 (0)20 3319 0729
Follow us at:
@BRENTCROSSTOWN
#PARKTOWN

Sign up for news and register your interest at:
[BXT.UK/REGISTER](https://www.bxt.uk/register)



Find out more about living at Brent Cross Town here:



Disclaimer: Whilst reasonable effort has been made to ensure the accuracy of this document and the information contained within, this cannot be guaranteed, and no reliance whatsoever should be placed on its contents. This document makes no representation or warranty about its subject matter. Any liability under any cause of action relating to this document (howsoever arising), is excluded to the extent permitted by law. The specification included herein is the anticipated specification as at the date of this brochure and is designed only as a guide. We reserve the right to amend the specification where necessary or desirable and without notice. Computer generated images are only indicative of the quality and style of the development and are not intended to represent fully accurate depictions. Apartment and amenity designs, sizes, layouts and other details are indicative only and may be subject to change. All measurements of areas, distances or any other dimensions shown in any text or plan are indicative and for information purposes only, and may differ after construction. Any reference to use of the property does not mean that any necessary planning permission, building regulations approval or other form of consent has been obtained. Variations occur between apartment types. Please refer to the sales team for details of a particular apartment. A management company will be appointed to provide building management services. Please note that the design development of The Delamarre and The Ashbee is ongoing, and items included in the specification may be amended to items of equivalent quality without notice. Plans are not to scale. All measurements are approximate. Images of furniture and planting are shown for context only and are not supplied with the apartment. Version 2, May 2022.



**Brent
Cross
Town**

@BRENTCROSSTOWN
#PARKTOWN
BRENTCROSSTOWN.CO.UK