



27 Willeton Street

Bucknall, Stoke-On-Trent, ST2 9JA

SSSHHH I'm WILLING to let you in on a little secret, I have a stunning DETACHED BUNGALOW, with your name on it. Boasting THREE good sized bedrooms, modern fitted kitchen, large lounge/diner and contemporary bathroom. The exterior is just as impressive, sitting on a corner plot with a rear, low maintenance garden and private driveway leading to a detached garage. Located in the popular area of Bucknall, with excellent commuter links to the main town centre, close to local amenities and schooling. The secret is out, dont delay, book your viewing at Dunn & Rate today!

£235,000

27 Willeton Street

Bucknall, Stoke-On-Trent, ST2 9JA



- STUNNING DETACHED BUNGALOW
- THREE BEDROOMS
- AMPLE OFF ROAD PARKING, SITTING ON A CORNER PLOT
- POPULAR LOCATION
- LOUNGE/DINER WITH FEATURE FIRE
- CONTEMPORARY BATHROOM SUITE
- GOOD SIZED LOW MAINTENANCE REAR GARDEN
- MODERN FITTED KITCHEN
- DETACHED GARAGE
- MOVE IN READY!!!

GROUND FLOOR

Entrance Hall

8'3" x 3'4" (2.53 x 1.03)

A double glazed door opens to the side aspect. Door to storage cupboard, radiator and tiled flooring.

Lounge/Diner

21'5" x 11'5" (6.53 x 3.49)

A double glazed bay window looks out to the front aspect. Electric fireplace, radiator and herringbone flooring.

Kitchen

10'4" x 7'8" (3.17 x 2.36)

A double glazed window looks out to the front aspect. Fitted with a range of wall and base storage units, coordinating work surface areas and ceramic sink and drainer. Appliances include electric oven with gas hob and cookerhood above and fridge/freezer. Plumbing and space for a washing machine. Cupboard housing boiler, ceiling spotlights and tiled flooring.

Hallway

Herringbone flooring.

Bedroom One

11'6" x 8'5" (3.51 x 2.57)

A double glazed window looks out to the rear aspect. Fitted wardrobes, radiator and herringbone flooring.

Bedroom Two

10'8" x 7'9" (3.26 x 2.38)

Double glazed sliding patio doors open to the rear. Radiator,

Bedroom Three

7'9" x 6'9" (2.38 x 2.06)

A double glazed window looks out to the side aspect. Radiator.

Bathroom

7'9" x 5'4" (2.37 x 1.64)

A double glazed window looks out to the side aspect. Fitted suite comprising of Waterfall shower cubicle, Low Level WC and wash hand basin with vanity unit. Partly tiled walls, ceiling spotlights and radiator.

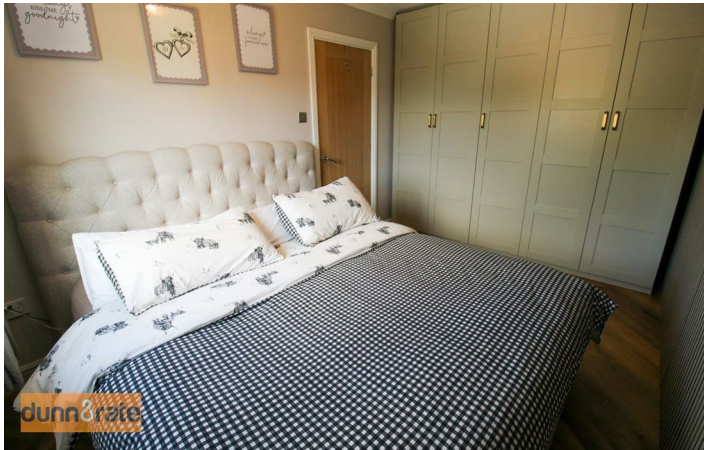
EXTERIOR

The property sits on a corner plot with laid to lawn and a paved driveway leading to a detached garage. The rear garden is low maintenance with two paved patio areas and decorative stone.

Garage

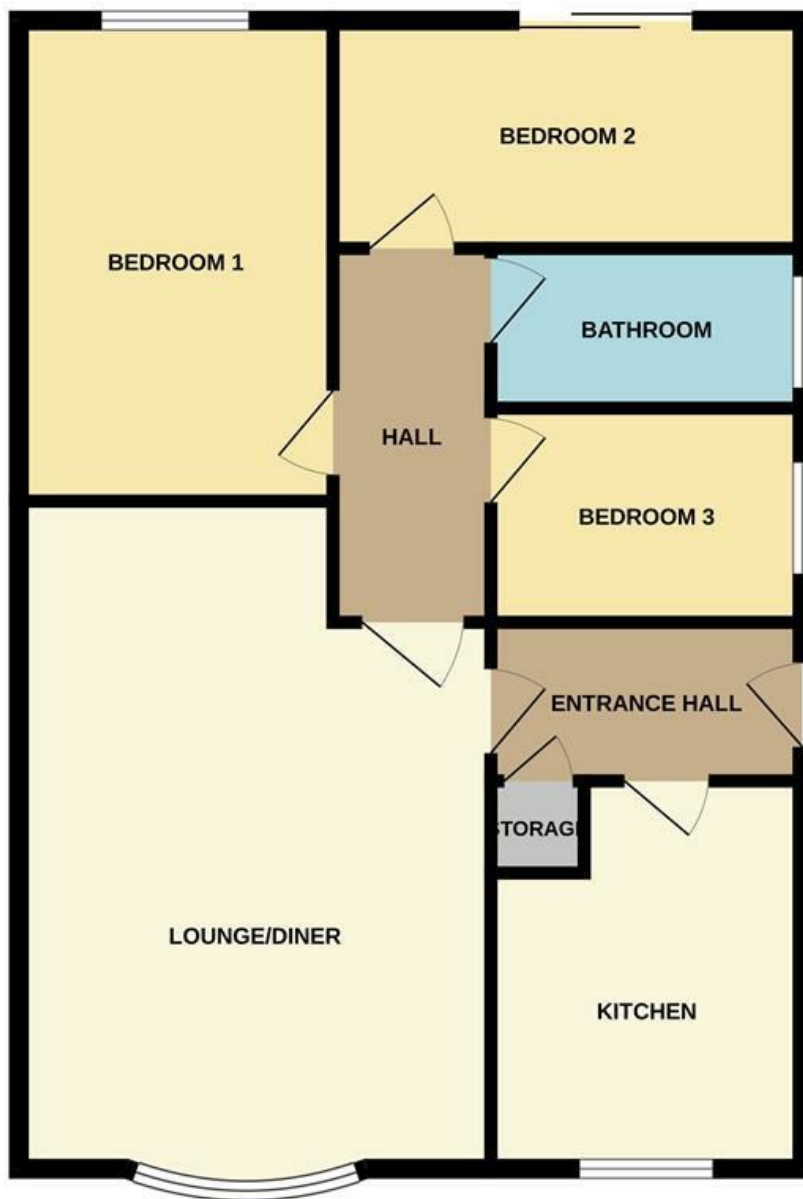
21'9" x 10'4" (6.64 x 3.17)

Detached garage with electric door to the front and fitted with power and lighting.



Floor Plan

GROUND FLOOR
793 sq.ft. (73.7 sq.m.) approx.



TOTAL FLOOR AREA : 793 sq.ft. (73.7 sq.m.) approx.

Whilst every attempt has been made to ensure the accuracy of the floorplan contained here, measurements of doors, windows, rooms and any other items are approximate and no responsibility is taken for any error, omission or mis-statement. This plan is for illustrative purposes only and should be used as such by any prospective purchaser. The services, systems and appliances shown have not been tested and no guarantee as to their operability or efficiency can be given.
Made with Metropix ©2026

These particulars, whilst believed to be accurate are set out as a general outline only for guidance and do not constitute any part of an offer or contract. Intending purchasers should not rely on them as statements of representation of fact, but must satisfy themselves by inspection or otherwise as to their accuracy. No person in this firm's employment has the authority to make or give any representation or warranty in respect of the property.

