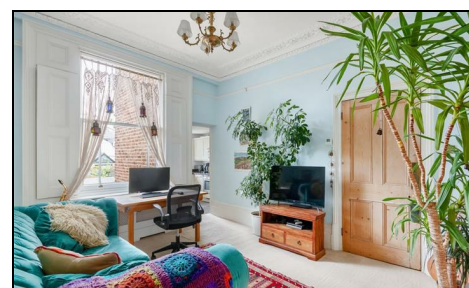
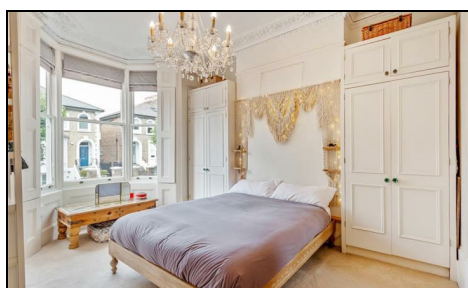


Pelham Road Wimbledon, SW19 1SX

£465,000 Leasehold - Share of Freehold



A wonderfully presented and bright and airy one double bedroom Victorian conversion flat offered to the market with a beautiful south facing private garden, share of freehold ownership and no onward chain, superbly located in the heart of the 'Ministers' area of Wimbledon.

Positioned on the upper ground floor of a stunning Victorian conversion property, boasting a myriad of traditional features and period charm. Comprising a well-appointed double bedroom leading out onto a spacious reception, with a separate kitchen and family bathroom. To the rear of the property is a superb private south facing garden with decking.

Located on a quiet, residential street in the desirable 'Ministers' area of Wimbledon, moments away from both Wimbledon Town Centre, Mainline Train Station and the Northern Line Tube, with excellent schools nearby.

Boasting share of freehold ownership, no set service charges or ground rent, plus an exceptionally long lease of 988 years, this is a brilliant first time purchase.

