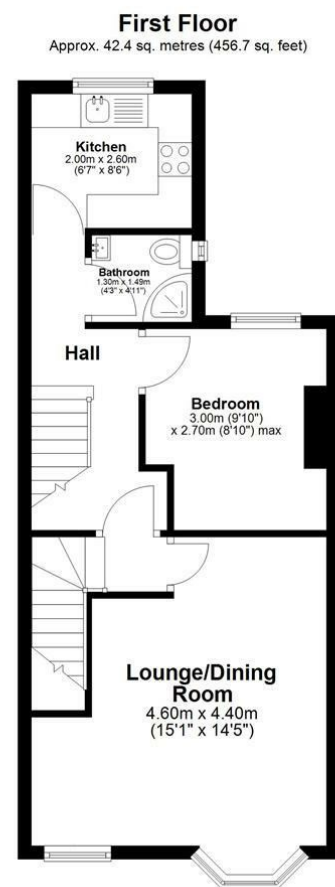
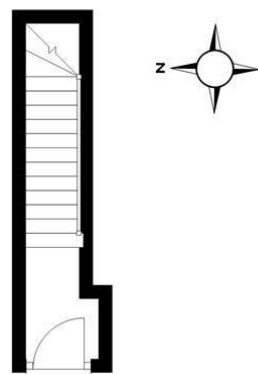


**2 Bed
Flat - Conversion
located in Havering-Atte-Bower**



Ground Floor
Approx. 4.3 sq. metres (45.8 sq. feet)



Total area: approx. 63.9 sq. metres (688.2 sq. feet)

This floor plan has been created by a third party and should be used as a general outline for guidance only. Any areas, measurements or distances quoted are approximate and any intending purchaser or lessee should satisfy themselves by inspection, searches, enquiries and/or full survey as to the correctness of each statement. We accept no responsibility or liability for any loss whatsoever that may arise as a result of this plan and the information contained within.

© @modephoto | www.modephoto.co.uk
Plan produced using PlanUp. □

The Parade

Directions

Contact

Lodge Barn Manor Road Lambourne End
Essex
RM4 1NA

E: info@stirlingestate.com

T: 07718 232857

stirlingestate.com



2A The Parade North Road Havering-Atte-Bower

£290,000
Leasehold



We asked residents of North Road what they love most about living here and these were the stand out answers:

- Beautiful local forests, parks and open countryside
- Ideal spot for horse lovers, with easily rentable stables and a strong equestrian community
- Great local community & friendly village feel
- Excellent Primary School just opposite the property (Dame Tipping Church of England Primary School)
- Close drivable distance to local amenities & family appeal

Two bedroom first floor maisonette with a long driveway to the front and a private garden to the rear.

As you enter the property, you are greeted by your own private entrance with stairs leading up to the main accommodation. The first floor opens into a spacious living area, offering plenty of room for both relaxing and dining.

