



The Avenue, TW9

£499,950

Dexters



The Avenue, TW9

An exceptional opportunity to acquire a beautifully presented top-floor conversion apartment, offering 577 sq ft of stylish and well-designed living space within an elegant period building. This attractive property benefits from a share of the freehold, no onward chain, and access to well-maintained communal gardens. Additional features include off-street parking, enhancing both convenience and desirability.

The property is entered via a well maintained communal entrance hall with staircase leading to the second floor communal landing. The accommodation consists of an entrance hall, a spacious reception room incorporating living and dining areas, a modern fitted kitchen with integrated appliances, a double bedroom and a contemporary styled bathroom.

To the rear is a large south facing, well-maintained, communal garden which is mostly laid to lawn with flower and shrub displays accessed via a secure gate to the side of the property. The property also has access to a large loft area used for storage.

The Avenue is ideally located for Richmond Park and Royal Botanic Gardens Kew. The commuter is equally well catered for with Kew Gardens, Richmond and North Sheen stations close to hand with additional excellent bus services to Central London.

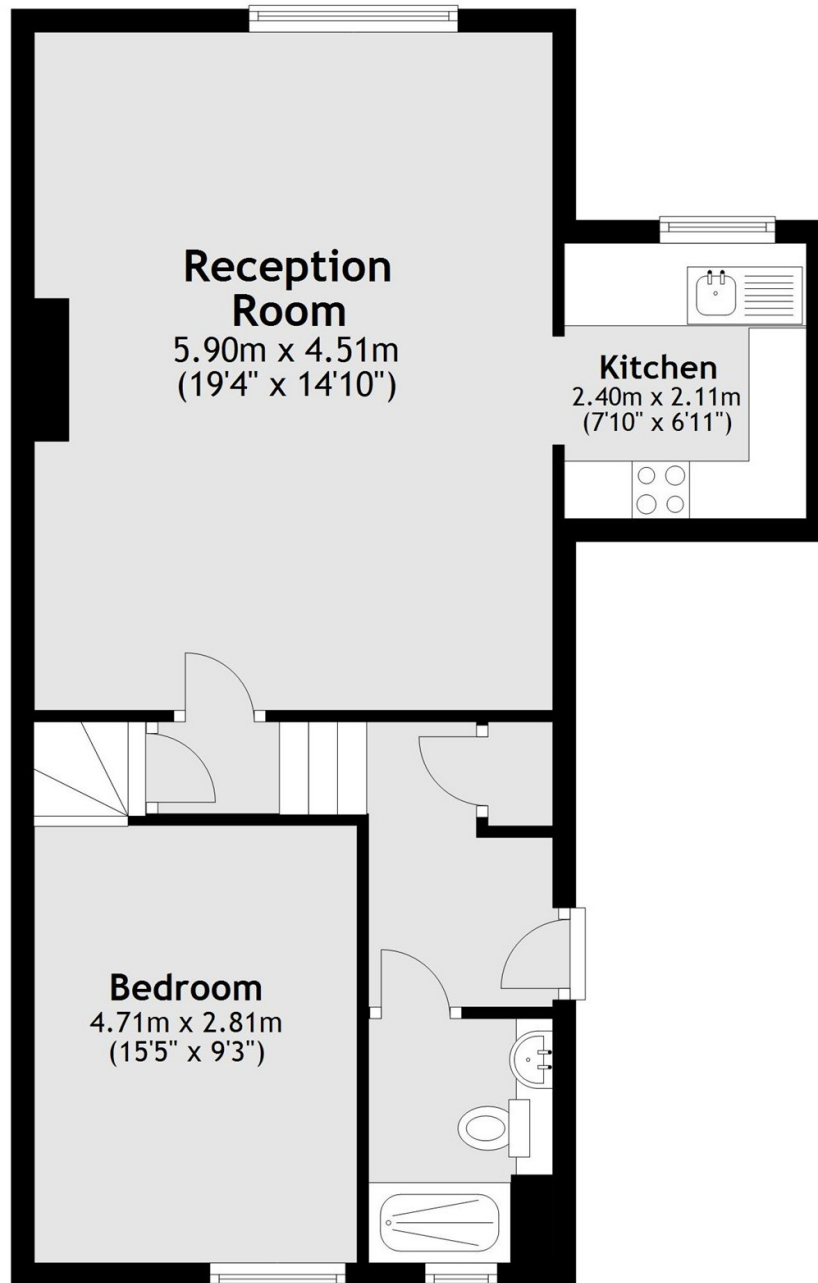
Features

- One Double Bedroom
- Spacious Reception Room
- Share Of Freehold
- Off Street Parking
- No Forward Chain
- Communal Garden



The Avenue, Kew, TW9

Second Floor



Total area: approx. 53.6 sq. metres (577.2 sq. feet)