



# Marlborough Court

Pembroke Road, W8

£4,766.67 per month  
(£1,100 per week)

Set on the first floor of a secure and well maintained three bedroom apartment is bright and airy. The apartment has a balcony with access off the reception room and bedroom and access to communal gardens.



# Marlborough Court

Pembroke Road, W8

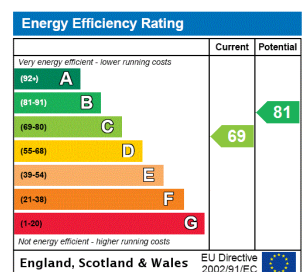


A bright and spacious three bedroom apartment in an ideal location near to the local amenities of Kensington High Street. With a good sized reception room, modern kitchen and two marble bathrooms, the flat also includes heating & hot water and access to communal gardens.

The building benefits of a lift, porter services and is well a located for amenities and transport links.

Conveniently located for the amenities of both the Kensington High Street and Earls Court area. As well as offering numerous transport links in to the City and Central London.

**Minimum Term:** 6 months  
**Deposit Required:** £6,600.00  
**Local Authority:** Royal Borough of Kensington & Chelsea  
**Council Tax Band:** F  
**EPC Rating:** C  
**Furnished**



### Chestertons Kensington Lettings

116 Kensington High Street  
 Kensington  
 London  
 W8 7RW  
 kensington@chestertons.co.uk  
 02079377260  
 chestertons.co.uk

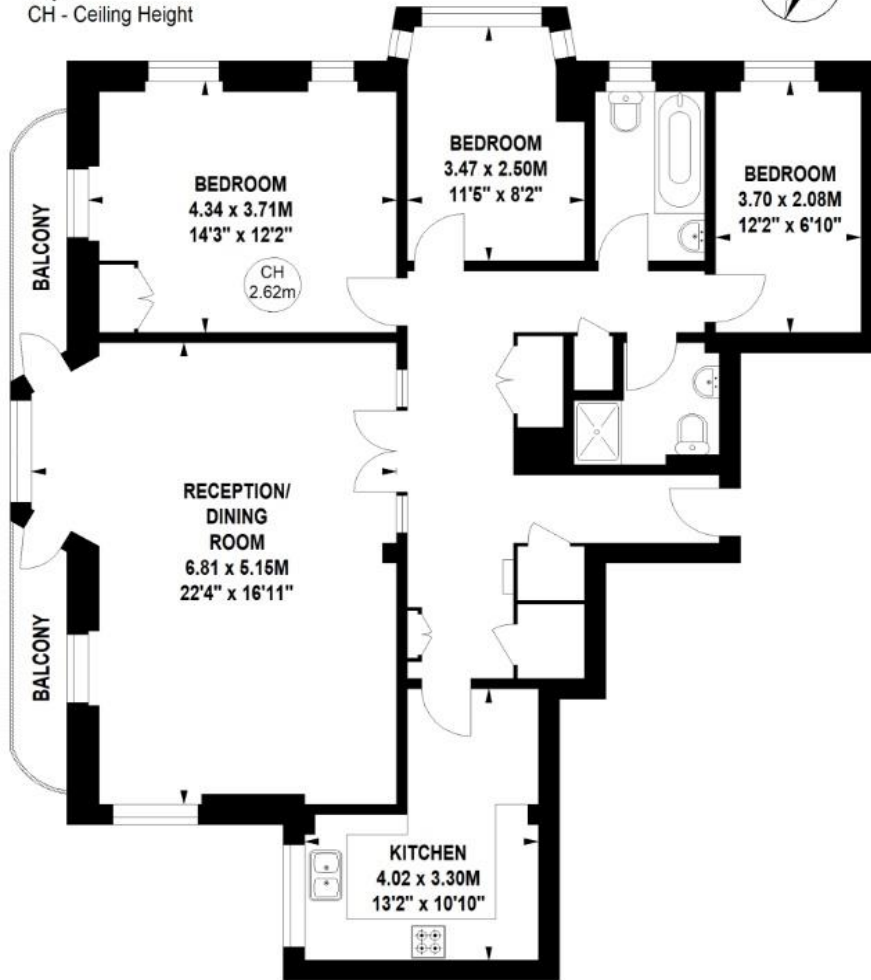
Additional tenant charges apply (fees apply to non-AST tenancies only)  
 Tenancy Agreement Fee: £300  
 References per Tenant/Guarantor: £60  
 Inventory check (approx. £100 – £250 inc. VAT)  
[chestertons.co.uk/property-to-rent/applicable-fees](http://chestertons.co.uk/property-to-rent/applicable-fees)

# Marlborough Court, W8

Approximate gross internal area

102.84 sq m / 1107 sq ft

Key :  
CH - Ceiling Height



## First Floor

Not to scale, for guidance only and must not be relied upon as a statement of fact.  
All measurements and areas are approximate only

