



Keld Lime Walk, Dibden Purlieu
£900,000



ANTHONY JAMES
PROPERTIES



Keld Lime Walk

Dibden Purliu, SO45 4RA

The accommodation is generous and thoughtfully arranged. One of the highlights is a master suite with walk-in wardrobe, dressing area, enclosed balcony, and an ensuite. Three further double bedrooms, with one benefitting from an additional ensuite, a separate shower room and a ground floor WC. A large lounge and dining room that flows into a high-specification conservatory with air-conditioning. The well-appointed kitchen is supported by a practical utility room. There is also a separate office.

The house sits within a mature plot that wraps around the house and provides plenty of natural screening. A gated driveway sweeps across the frontage, providing generous off-road parking and access to the integral garage. The gardens are well-stocked with plants, shrubs, lawn and seating areas. There is even a 'hidden' garden area set within the established shrubs and trees.

The property is enhanced by UPVC double glazing and gas central heating.

Council Tax band: TDB

Tenure: Freehold



1 Southward House
Dibden Purliu SO45 4PT

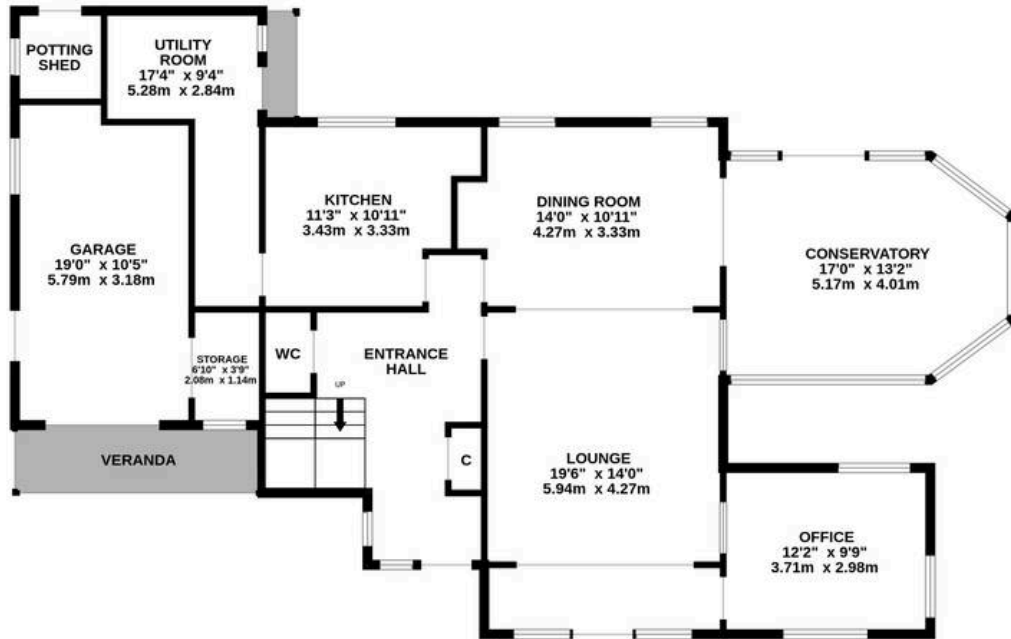


T: 02380 844405
info@anthonyjamesproperties.co.uk

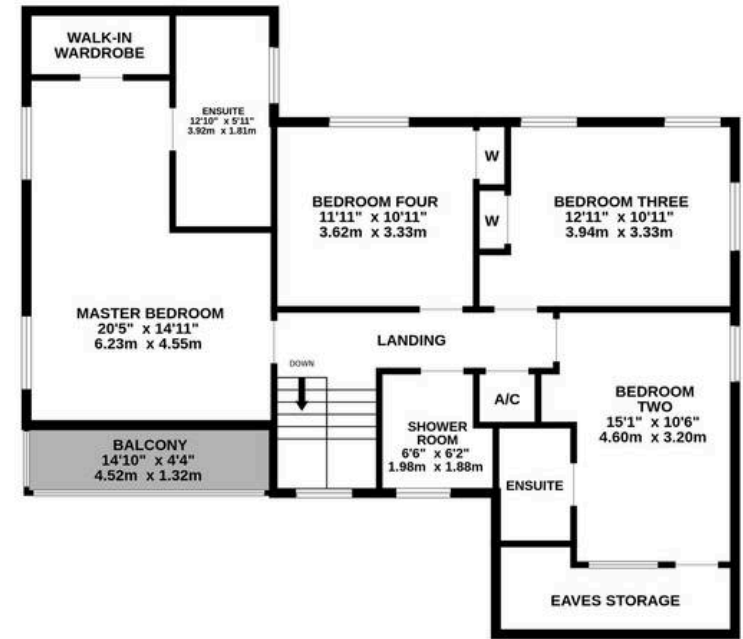




GROUND FLOOR
1414 sq.ft. (131.4 sq.m.) approx.



1ST FLOOR
1060 sq.ft. (98.5 sq.m.) approx.



TOTAL FLOOR AREA : 2474 sq.ft. (229.8 sq.m.) approx.

Whilst every attempt has been made to ensure the accuracy of the floorplan contained here, measurements of doors, windows, rooms and any other items are approximate and no responsibility is taken for any error, omission or mis-statement. This plan is for illustrative purposes only and should be used as such by any prospective purchaser. The services, systems and appliances shown have not been tested and no guarantee as to their operability or efficiency can be given.
Made with Metropix ©2026